

# US58 Corridor Study

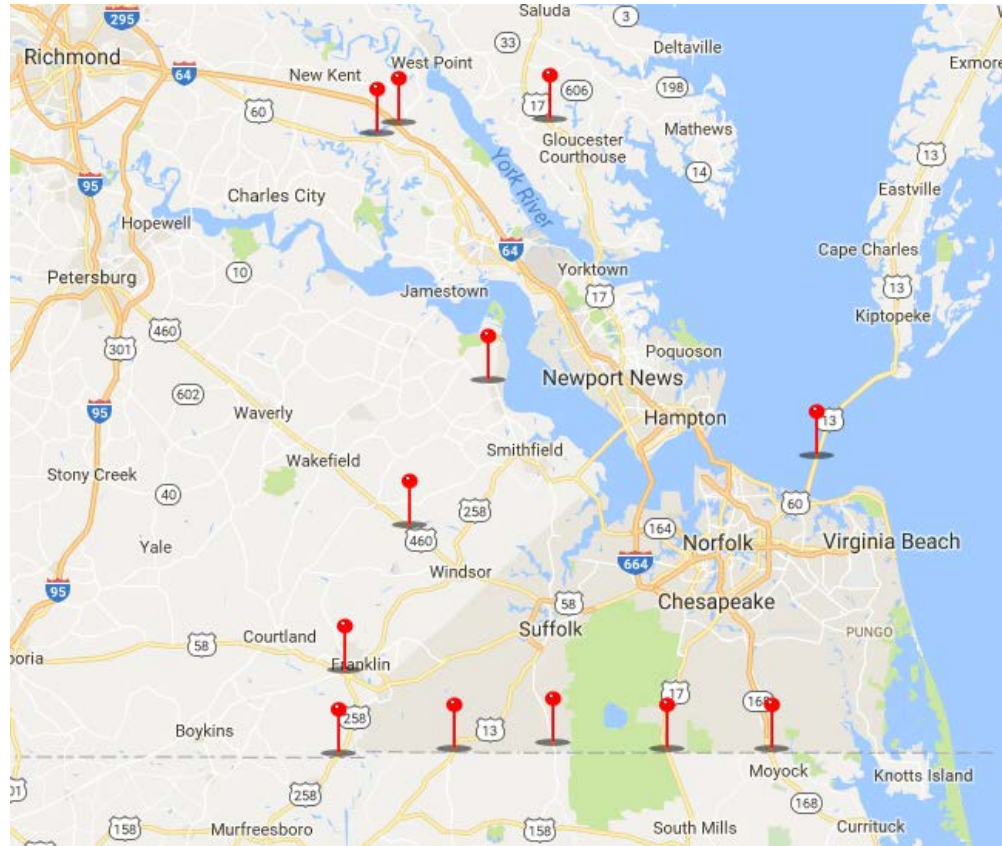
Presented to CTAC

April 12, 2018

By Robert B. Case, PE, PhD



# Impetus



What are our most important gateways?

# Traffic Volumes

1.	I-64 (at New Kent County line)	50,803
2.	Rte 168 (at NC line)	24,096
3.	<b>US 58 (at Southampton County line)</b>	<b>18,964</b>
4.	US 17 (at NC line)	13,398
5.	US 17 (at Middlesex County line)	12,937
6.	US 460 (at Southampton County line)	9,279
7.	US 13 (at Chesapeake Bay Br. Tunnel)	8,959
8.	VA 10 (at Surry County line)	6,975
9.	US 60 (at New Kent County line)	5,795
10.	US 258 (at NC line)	5,585
11.	VA 32 (at NC line)	5,117
12.	US 13 (at NC line)	3,670

# Trucks

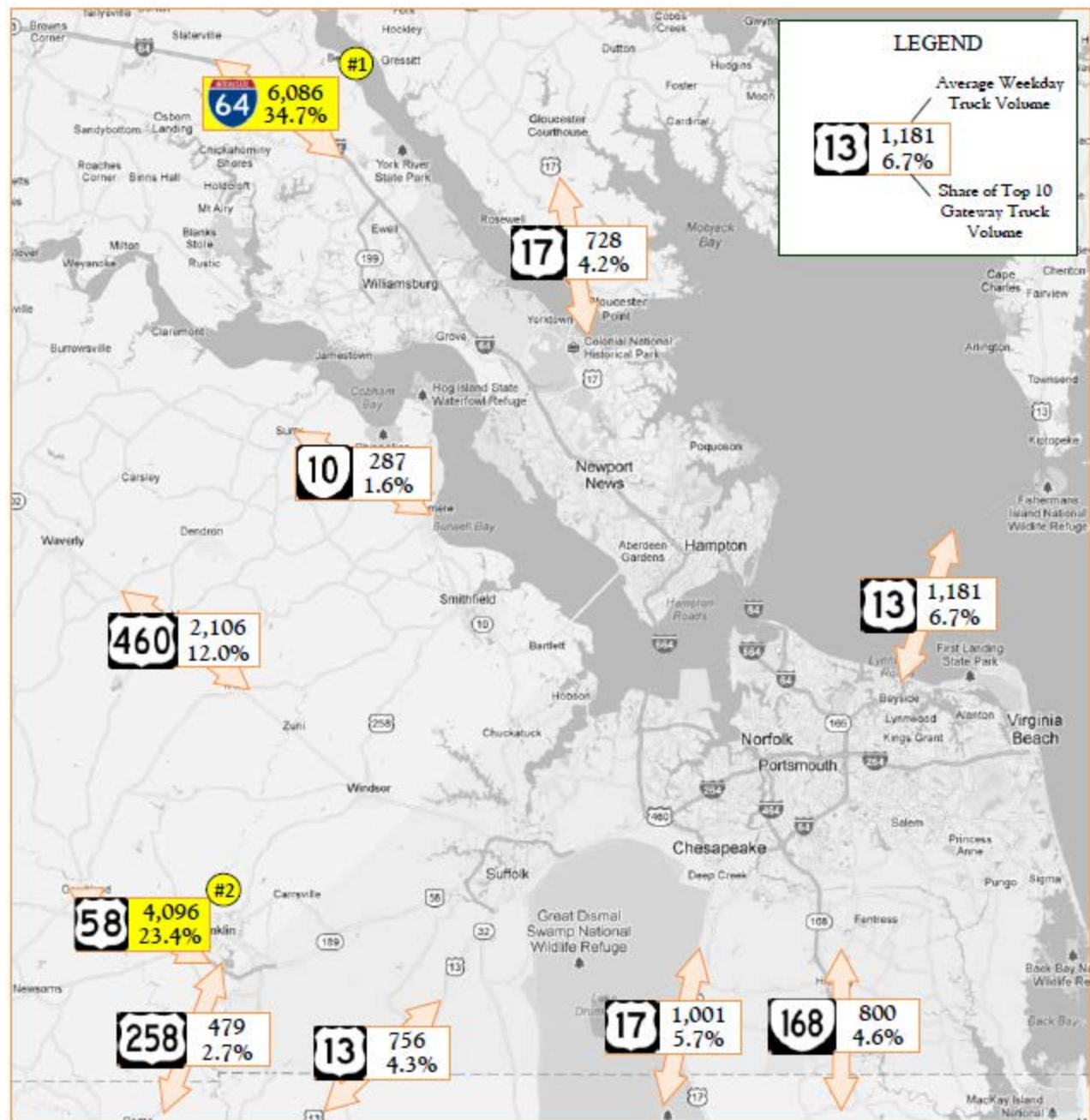
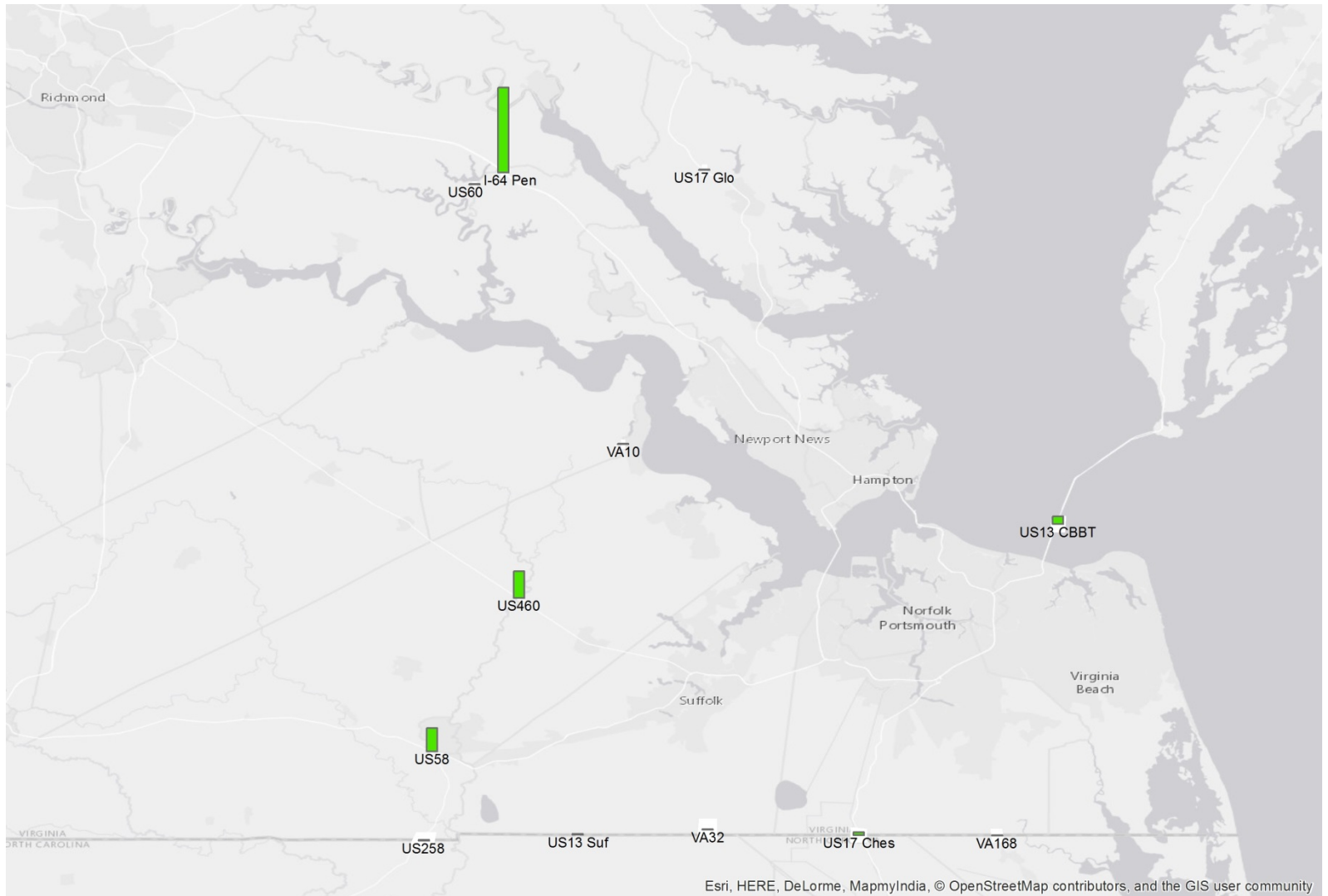


Figure 64 – Number and Share of Trucks Passing Through the Top 10 Regional Gateways Each Weekday, 2015

# Port-Related Distribution Center Trucks



# Evacuation Routes



# US 58 Corridor Study

- First phase (done)
  - “initial kickoff/scoping meeting and stakeholder coordination”
- Second phase (now)
  - Arterial Management Plan
- Third phase (possible, future)
  - “more detailed study” of “improving the 58 corridor to interstate standards”

# Arterial Management Plan

## Study Corridor

US 58 from Suffolk BYP to  
Brunswick – Greenville County  
Line (~71 miles)



ARTERIAL  
PRESERVATION PROGRAM

VDOT  
Virginia Department of Transportation



# Purpose & Components

- Purpose
  - “to facilitate local economic development goals, sustain local **commerce**, improve the **safety** and preserve the **capacity** of current US 58”
- Components
  - “**immediate, medium and long term** visions of the corridor”
    - Long term: “including possible improvement...outside of the present corridor (alternate corridors) that... **approach interstate design standards**”

# Funding & Conducts

- Funding: VDOT
  - Contact: Jerry Pauley
    - [Jerry.Pauley@vdot.virginia.gov](mailto:Jerry.Pauley@vdot.virginia.gov)
    - 757-925-1525
- Consultant: Michael Baker International
  - Contact: Brad Shelton
    - [Brad.Shelton@mbakerintl.com](mailto:Brad.Shelton@mbakerintl.com)
    - 804-287-3161
- [www.virginiadot.org/projects/hamptonroads/us\\_5\\_8\\_arterial\\_management\\_plan.asp](http://www.virginiadot.org/projects/hamptonroads/us_5_8_arterial_management_plan.asp)

# Stakeholders

- City of Emporia
- City of Franklin
- Greensville County
- Isle of Wight County
- Southampton County
- City of Suffolk
- Port of Virginia
- HRTPO
- Crater Planning District Commission

# Products to Date

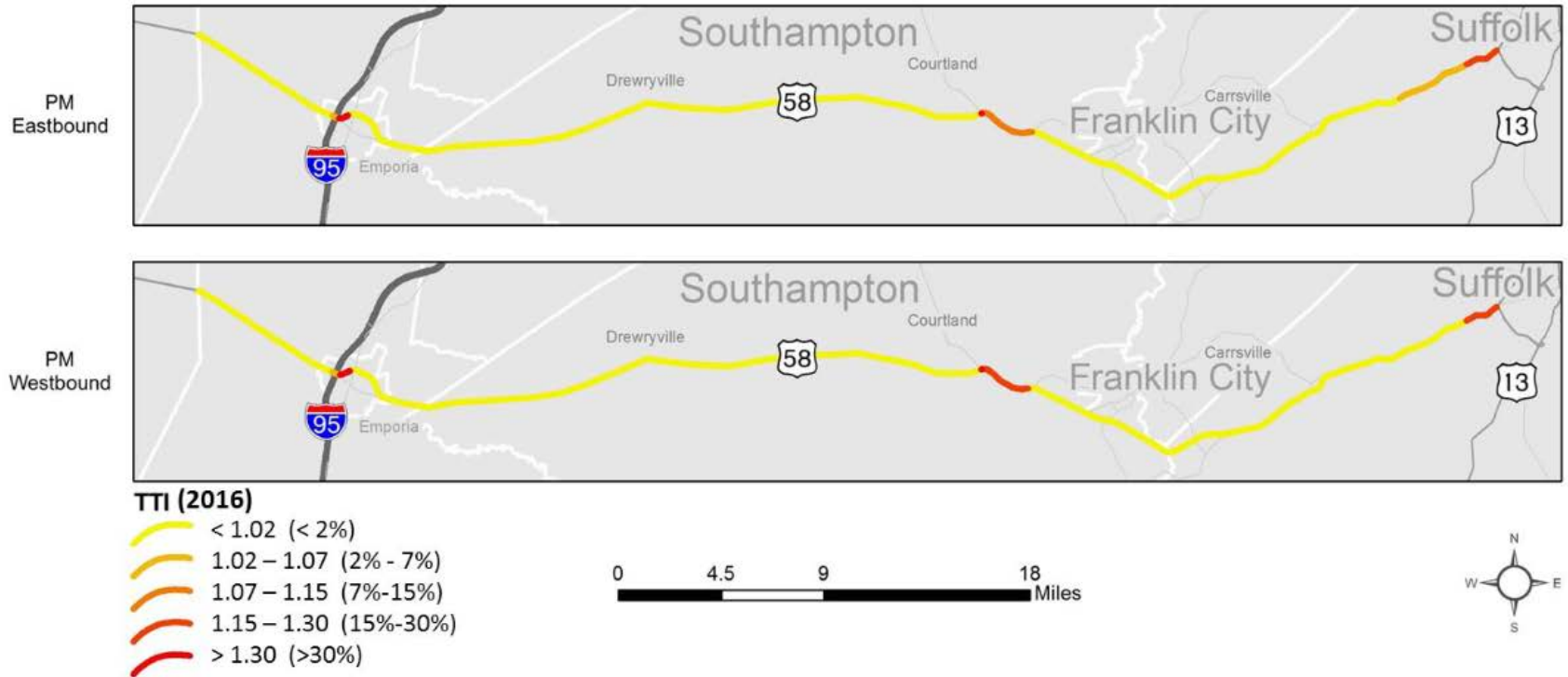
- Analysis
  - Congestion
  - Safety
  - Access
  - Opportunities for Improvement
- Draft Recommendations
  - Intersection projects for SmartScale funding

# Traffic Signals (now & future) Slow Travel



# Traffic Signals Slow Travel

## Reliability - Travel Time Index 2016



# Crash History

2014 - 2017

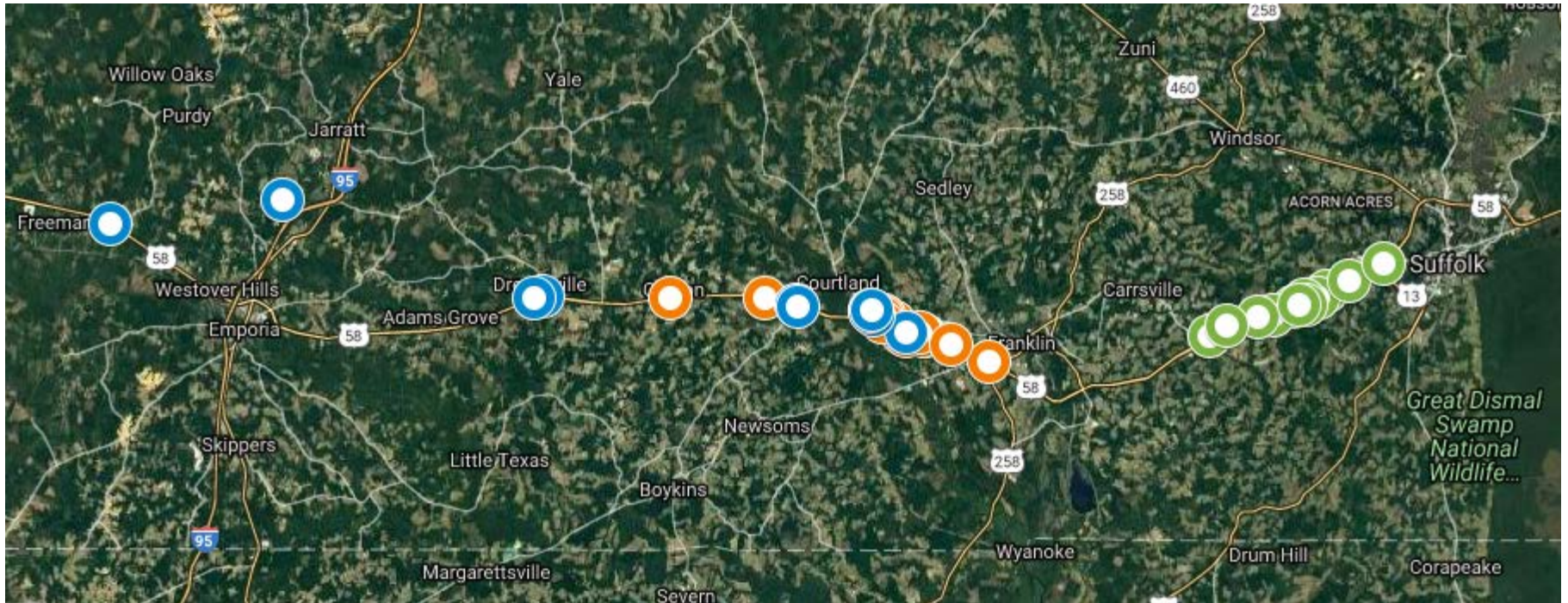


# Public Meetings

- March 12, 2018 – Pioneer Elementary School, 150 Pioneer Road, **Suffolk**, VA 23437 from 6 p.m. to 8 p.m.
- March 13, 2018 – Southampton County Office Center, 26022 Administration Center Drive, **Courtland** VA 23837 from 5 p.m. to 7 p.m.
- March 15, 2018 – Greensville County Government Center, 1781 Greensville County Circle, **Emporia**, VA 23847 from 5 p.m. to 7 p.m.



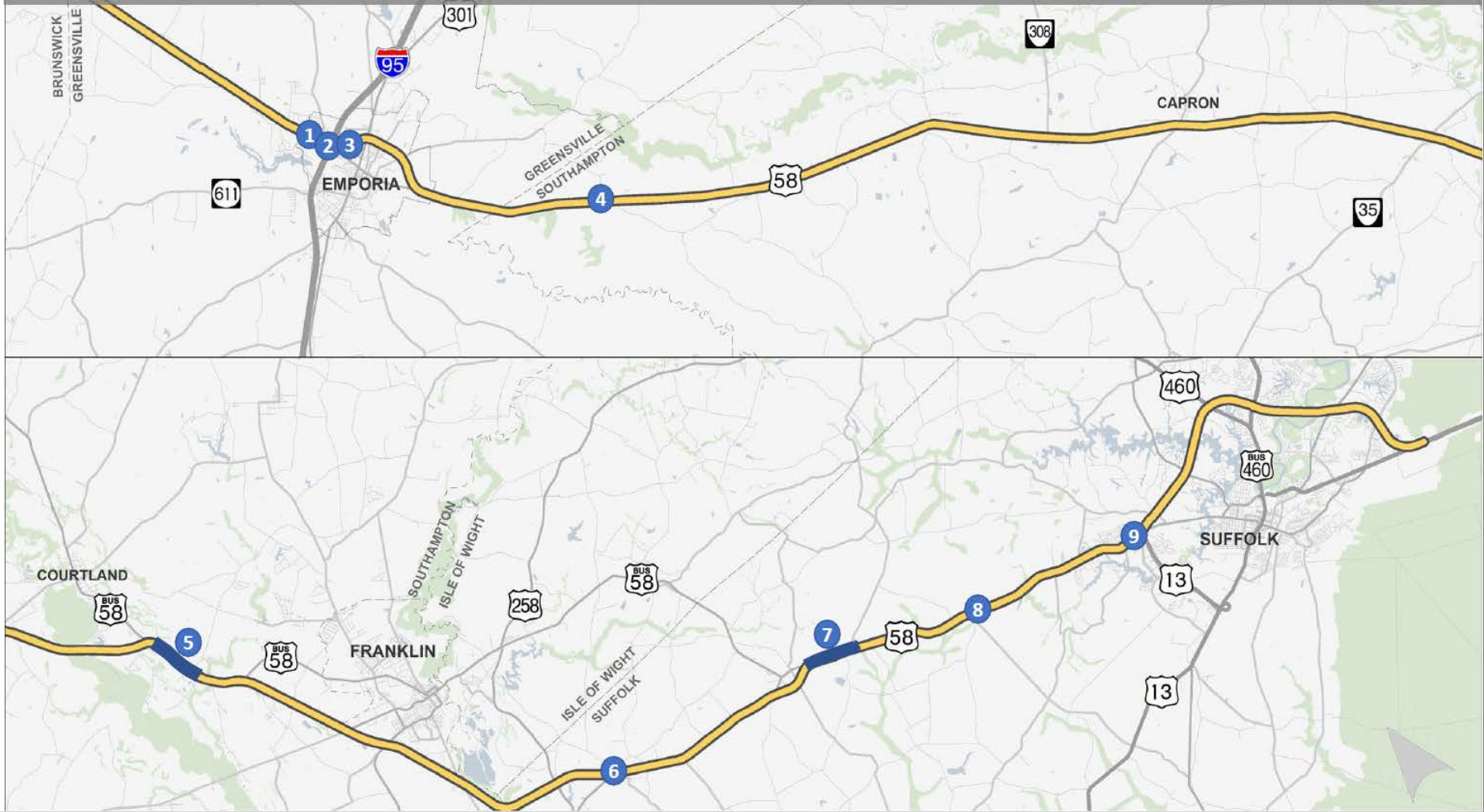
# Public Comment Concerns



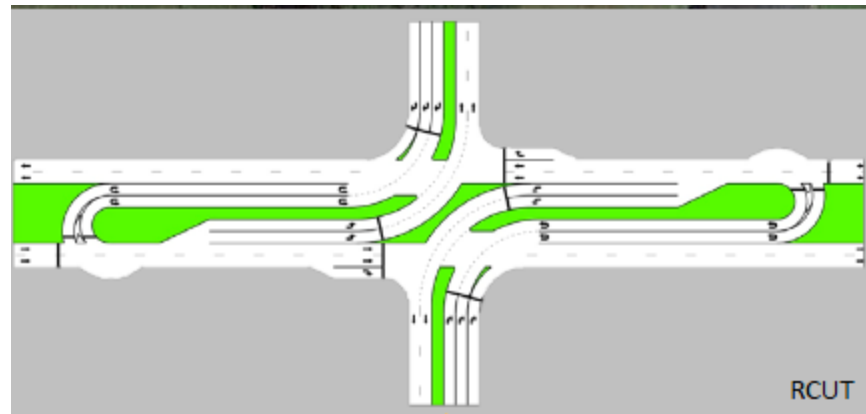
# Response to Analysis & Public Input

- Consultant:
  - “We have incorporated the **feedback received at the US 58 Public Information Meetings...**
  - with the **congestion and safety data** we have collected...
  - and developed the attached **list of candidate SMART SCALE projects.**”

# Potential SmartScale Funding Applications



# Typical Proposed Intersection Project



Restricted Crossing U-Turn (RCUT)

# Next Steps- SmartScale

Jerry Pauley will be reaching out to each locality to discuss the proposals and to gauge interest on moving forward with any of these for **potential SMART SCALE applications.**

– Applications are due May 31<sup>st</sup>.

# Next Steps- scope completion

- Task 2.5                      Future Land use
  - Task 2.6                      Traffic Volume Forecasting
  - Task 2.7                      Recommendations
  - Task 2.8                      Interstate Feasibility Analysis
- 
- Phase II Completion (re: scope):                      Aug'18