



HRTPO COMMUNITY OUTREACH ACTIVITIES FY 2013

Brian Chenault
Community Outreach Planner
Transportation Technical Advisory Committee
September 4, 2013



Background

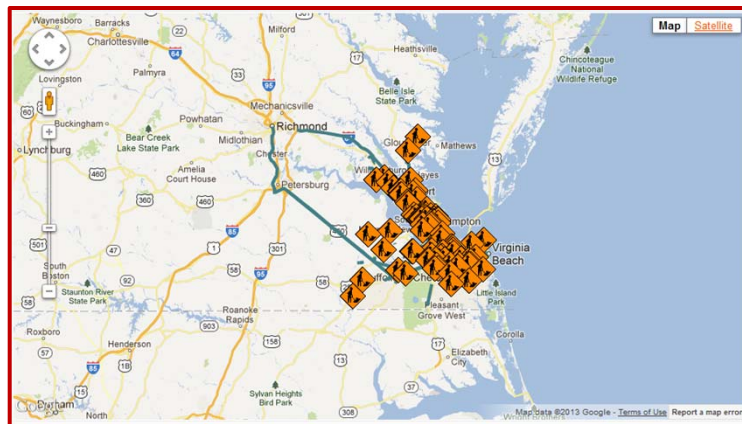
- Part of larger Public Involvement Program
 - ▣ Like LRTP & TIP, core function
- *Outreach* is:
 - ▣ *Going to the community rather than waiting for the community to come to us*
- Defined by:
 - ▣ Increasing awareness
 - ▣ Inviting
 - ▣ Sharing resources
 - ▣ Engaging

“An efficient transportation system can only come from a true understanding of citizens’ diverse and far-ranging needs.”

-HRTPO Public Participation Plan

Community Meetings/Presentations

- HRTPO/MPOs – Who, What, Why
- Core Products
 - ▣ LRTP, TIP, & UPWP
- Resources
- How to Get Involved



- Olde Towne Civic League*
- Southside Lions Club*
- Chesapeake Transportation Safety Commission*
- Empower Hampton Roads*
- Hampton Citizens Unity Commission*
- Newport News Commission on Youth*
- Hampton Neighborhood Commission*
- Newport News Task Force on Aging*
- VB Mayor's Commission for Person's with Disabilities*
- HRT Paratransit Advisory Committee*
- Peninsula Task Force on Aging*
- Kiwanis Club of Poquoson*
- Kiwanis Club of the Virginia Beach-Combers*
- Cottage Road Park Civic League*
- Northampton Lions Club*
- Smithfield Kiwanis Club*
- Thalia Lions Club*
- Northampton Civic League*

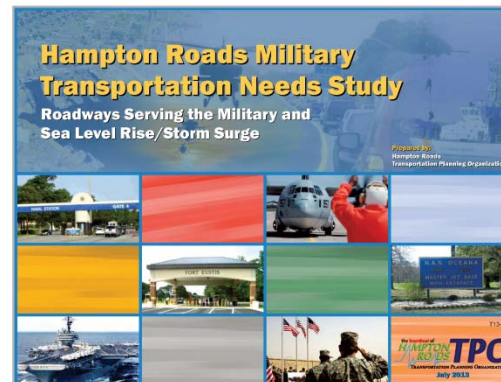
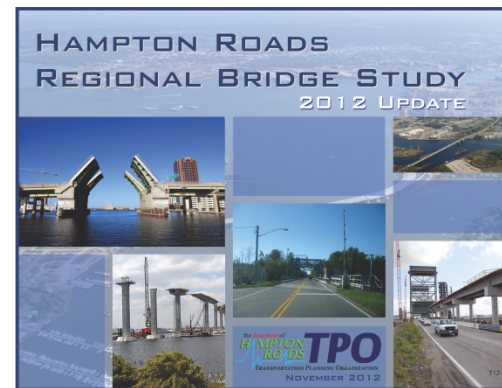
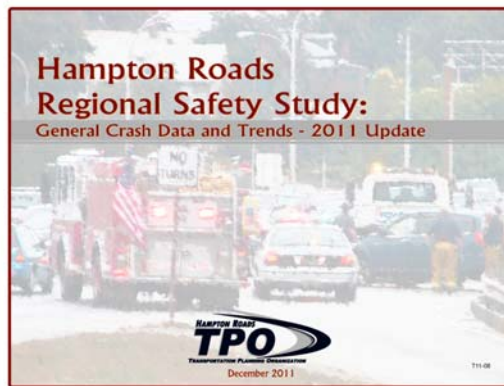
Events

- Tabling/Exhibit Opportunities
 - General Population (ex. Tides Game)
 - Youth (ex. 2013 Youth Career Expo)
 - Seniors (ex. Virginia Beach Senior Showcase)
 - Special Needs (ex. Endependence Center Annual Mtg.)



Special/Technical Report Outreach

- Outreach to interested/affected parties



Expected in FY 2014

- Continued events, meetings/presentations, and special report outreach
- Greater social media presence
- Community webpages
- Refine current resources





HRTPO COMMUNITY OUTREACH ACTIVITIES FY 2013

Brian Chenault
Community Outreach Planner
Transportation Technical Advisory Committee
September 4, 2013