

FY 2015 – 2018 TIP QUARTERLY SNAPSHOT FY16-Q3

Presented By:
John Mihaly
Transportation Analyst
HRTPO
June 1, 2016

PROJECTS WITH SIGNIFICANT EXPENDITURES (>\$2,000,000) THIS QUARTER | (JANUARY – MARCH 2016)

Project	Locality	UPC	Expenditures
Midtown Tunnel Debt Service – Primary	Hampton Roads	103036	\$16,179,292
Route 460 PPTA Debt Service	Statewide	103754	\$10,866,616
I-64 Peninsula Widening - Segment 1	Hampton Roads	104905	\$5,015,779
Shore Drive Bridge Replacement	Virginia Beach	97737	\$3,558,424
I-64 Southside Widening (including High Rise Bridge) Preliminary Engineering	Chesapeake	106692	\$3,125,721
I-64 Peninsula Widening – Segment 2	Hampton Roads	106665	\$3,120,328
I-564 Construction – Intermodal Connector	Norfolk	18968	\$3,094,023
Project Contribution for DT/MT/MLK – Primary	Hampton Roads	101851	\$3,022,520
Lynnhaven Parkway Extension – Phase XI	Virginia Beach	14603	\$2,718,598
Miscellaneous Transit – Bus Replacement	WATA – DRPT	T9148	\$2,260,425

PROJECTS WITH SIGNIFICANT CONSTRUCTION (CN) EXPENDITURES (>\$2,000,000) THIS QUARTER | (JANUARY – MARCH 2016)



I-64 Peninsula Widening - Segment I



Lynnhaven Parkway Extension – Phase XI

Shore Drive Bridge Replacement



PROJECTS WITH FIRST EXPENDITURES IN CONSTRUCTION (JANUARY – MARCH 2016)

HIGHWAY

Project	Expenditures	Locality	UPC
I-64 Peninsula Widening – Segment 2	\$2,483,903	Hampton Roads	106665
Carrsville Highway Bridge Replacement over Route 632	\$343,949	Isle of Wight County	81435
Route 17 Traffic Signal at Route 628	\$230,002	Gloucester County	104686
Railroad Crossing Improvements at Jenkins Mill Road	\$170,302	Isle of Wight County	104654

NON-HIGHWAY

Project	Expenditures	Locality	UPC
Miscellaneous Transit – Bus Replacement	\$2,260,425	WATA – DRPT	T9148
Elizabeth River Trail Phase 3a	\$1,030,966	Norfolk	97727
Elizabeth River Trail Phase 4b	\$311,349	Norfolk	103075
WATA Facility Construction	\$84,435	WATA – DRPT	T11932
North Main Street Multi-Use Trail – Phase II	\$2,452	Suffolk	99172

FEATURED PROJECTS WITH FIRST EXPENDITURES (JANUARY – MARCH 2016)

Elizabeth River Trail, Phases 3a & 4b

Estimated Cost:

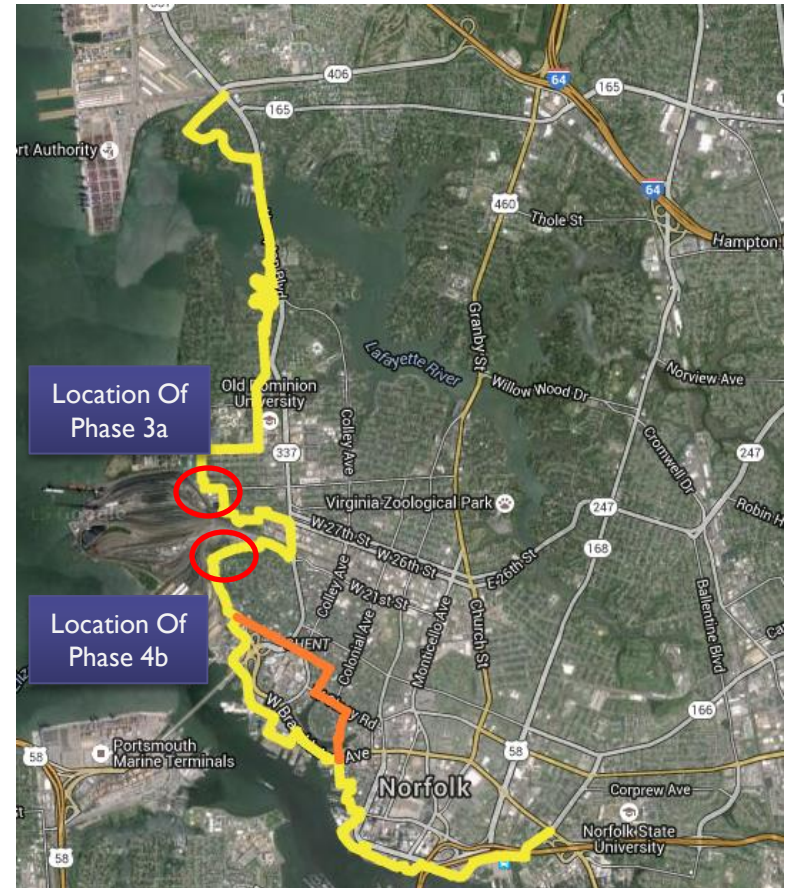
\$1,296,899

Purpose:

Phase 3a of the Elizabeth River Trail project serves to connect 2 existing segments of the trail in West Ghent between the Mallory County Club and Jeff Robertson Park. Phase 4B project includes pedestrian and bicycle improvements/multi-use trail, landscaping, and lighting improvements along Parker Avenue and 38th Street near ODU.

Estimated Completion:

Complete now; billing just being reported

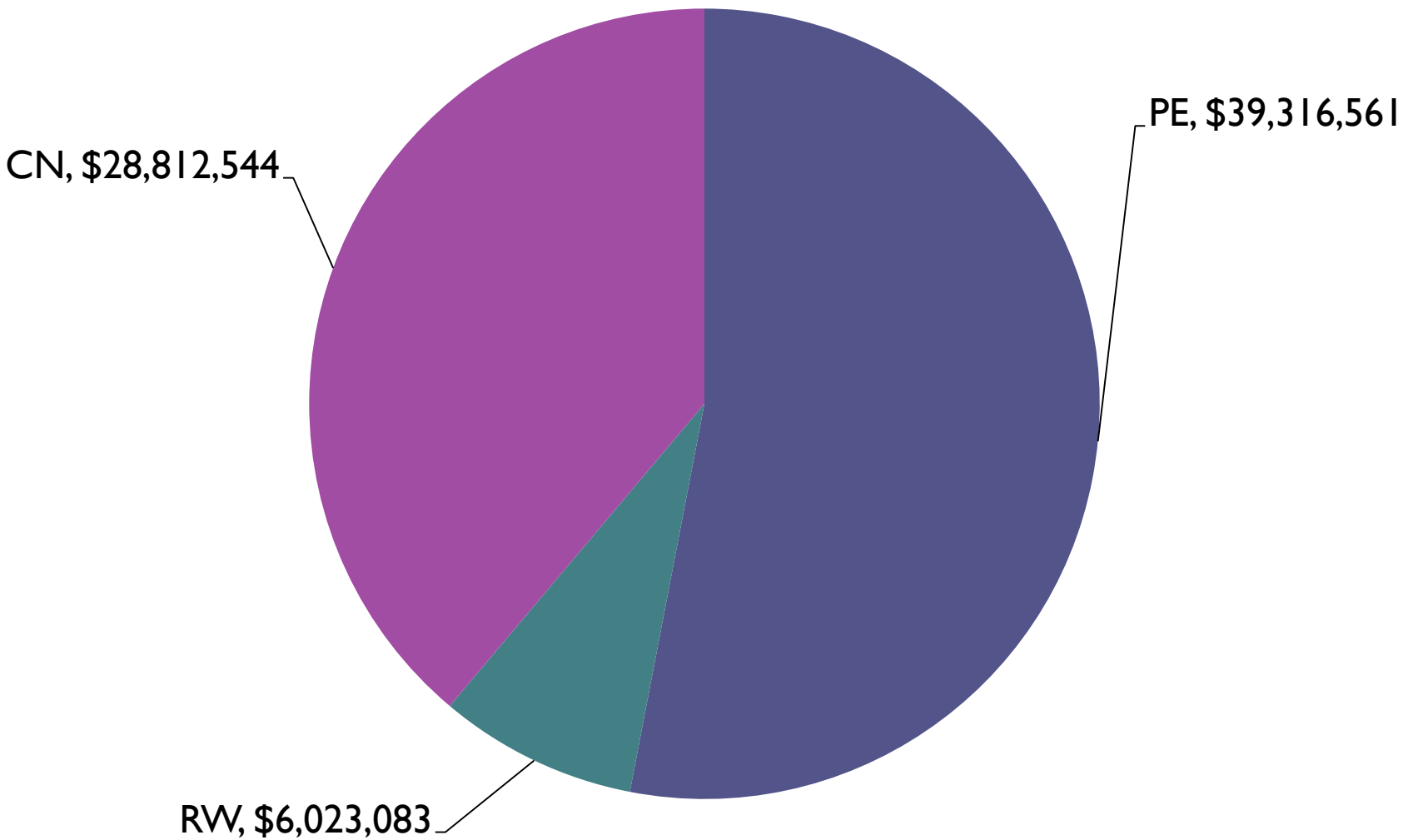


Project	Expenditures	Locality	UPC
Elizabeth River Trail Phase 3a	\$1,030,966	Norfolk	97727
Elizabeth River Trail Phase 4b	\$311,349	Norfolk	103075

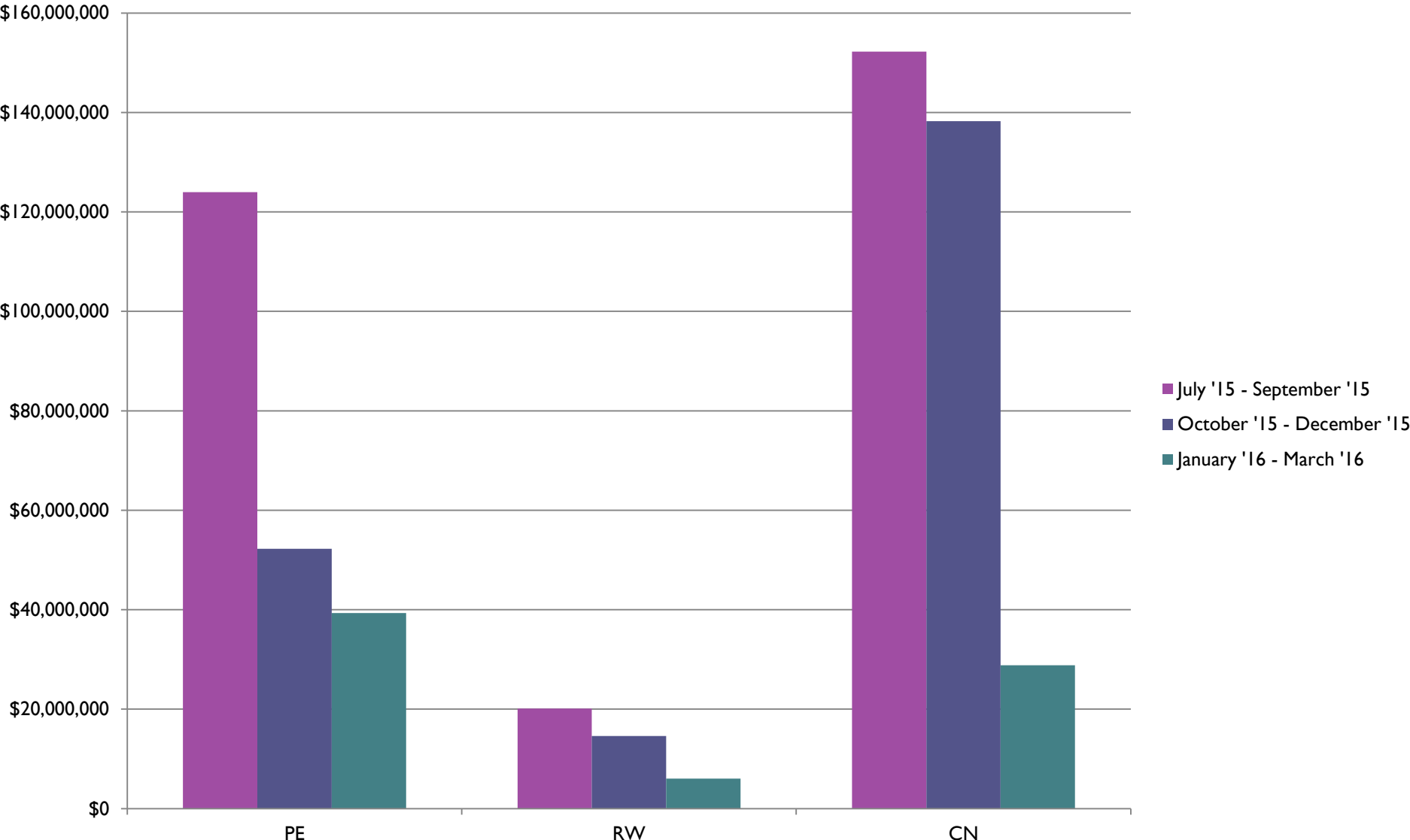
PROJECTS CURRENTLY IN CONSTRUCTION PHASE, BY LOCALITY (JANUARY – MARCH 2016)

Locality	Number of Projects	Total Costs
Chesapeake	6	\$ 532,117,093
Gloucester County	1	\$ 375,000
Hampton	5	\$ 18,870,303
Isle of Wight County	3	\$ 12,491,958
James City County	2	\$ 4,548,716
Newport News	6	\$ 68,745,640
Norfolk	12	\$ 278,817,110
Poquoson	-	-
Portsmouth	2	\$ 34,736,233
Suffolk	4	\$ 3,938,608
Virginia Beach	6	\$ 291,727,475
Williamsburg	-	-
York County	1	\$ 57,675,163
Multi-Jurisdiction	6	\$ 971,212,615
Region-wide Total	56	\$ 2,290,358,914

TOTAL PROJECT EXPENDITURES BY PHASE (JANUARY – MARCH 2016)



TOTAL PROJECT EXPENDITURES: PAST THREE QUARTERS



ACTIVE CMAQ/RSTP PROJECTS WITH NO EXPENDITURES IN PAST TWO QUARTERS (OCTOBER 2015 – MARCH 2016)

- ❖ **12** projects were flagged for having no expenditures in the past two quarters.
 - **2** cancelled projects
 - **6** completed project awaiting financial close
 - **3** projects delayed, needing additional funding
 - **1** project with work ongoing to be billed

- ❖ **Coordinate with CMAQ and RSTP project sponsors to determine:**
 - Reasons for stalled projects and how to get them moving
 - Whether funds should be reallocated to other projects