

# Signature Paths- update

by Robert B. Case, PE, PhD

Presented to TTAC

November 4, 2015

# Impetus

- \* Riding Monon rail-trail in Indianapolis

# Monon Rail-Trail in Indianapolis



wikimedia.org



# multi-mode; multi-use



[usa.streetsblog.org](http://usa.streetsblog.org)



[guide.alibab.com](http://guide.alibab.com)

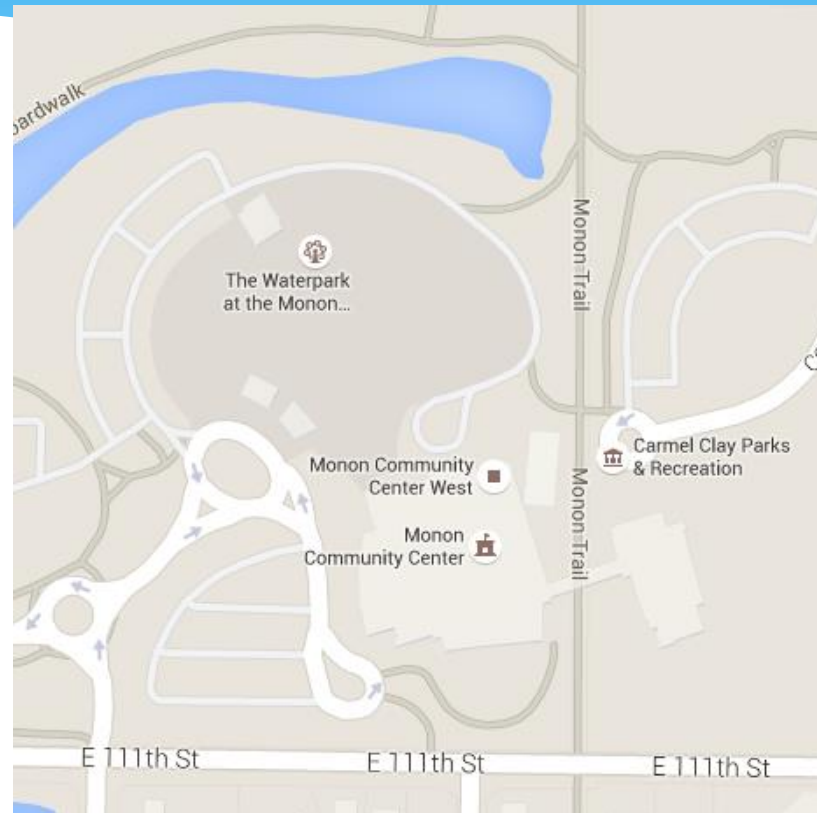


[doingindy.com](http://doingindy.com)



[snipview.com](http://snipview.com)

# Facilities being named for trail



Google maps

# Economic Development



Google maps



Google maps



6  
amamascorneroftheworld.com

# Impetus

- \* Riding Monon rail-trail in Indianapolis
- \* Why don't more people walk & bike?
  - \* Slower, more dangerous, less comfortable
- \* UPWP: determine good locations in Hampton Roads for signature paths, focusing on:
  - \* abandoned rail rights-of-way (faster, safer, more pleasant)
  - \* in developed areas (less \$/user, greater transportation need)

# Existing- Hampton Roads

- \* Existing successful paths, e.g. VB Boardwalk
- \* Existing rail trails
  - \* Cape Henry Trail (VB)
  - \* Trail SE of Rosemont Rd (VB)
  - \* Seaboard Coastline Trail (Suffolk)
  - \* Elizabeth River Trail- portion (Norfolk)
  - \* Virginia Beach Trail- along Norfolk Ave (VB)



# Stakeholders Kickoff- Sept 2

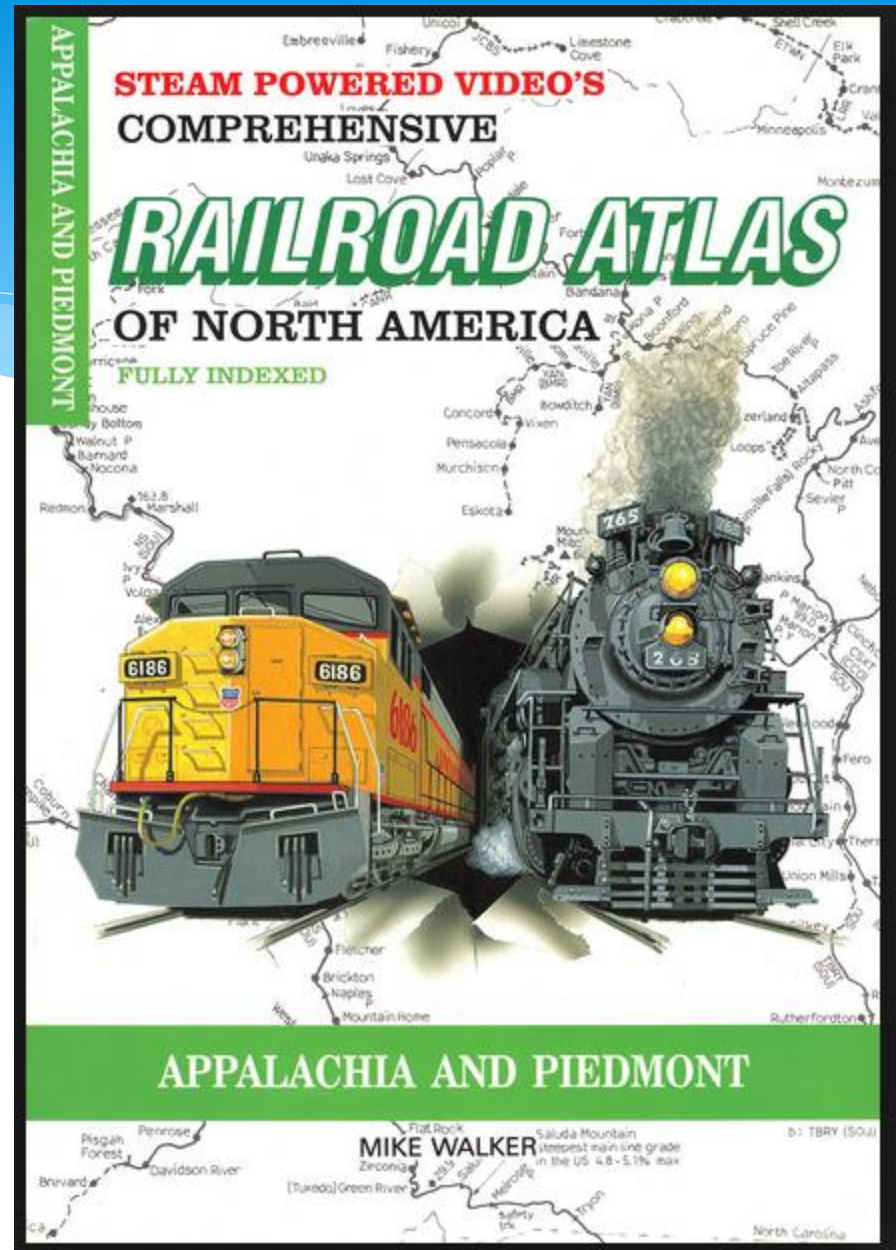
Alison Alexander (HA)  
Keith Cannady (HA)  
Thelma Drake (NO)  
Jeff Raliski (NO)  
Sherry Earley (SU)  
Helen Gabriel (SU)  
LJ Hansen (SU)  
Carl Jackson (VDOT)  
Eric Stringfield (VDOT)  
Reed Nester (WM)

Steve Froncillo (CH)  
Bridjette Parker (NN)  
Britta Ayers (NN)  
Julie Navarrete (HRT)  
Sam Sink (HRT)  
Roberta Sulouff (JCC)  
Wayne Wilcox (VB)  
Susan Wilson (PO)  
Garrey Curry (GL)  
Frank Papcin (Citizen)

- Creating an inventory of existing bicycle and pedestrian facilities.
- \* • Referring to Kevin Page as a resource for abandoned rail and identifying rail ROW constraints.
- Researching whether it is possible to add trails/paths directly underneath high power/utility lines. May want to bring Dominion Power into discussion.
- Possible signature paths in Hampton Roads include the Elizabeth River Trail and the South Hampton Roads Trail (SHRT).
- If focusing on SHRT, give it a more regional identity.
- Researching the connectivity of signature paths to other paths/trails within cities/counties as well as transit.
- \* • The idea of developing a system of our paths/trails was shared among the meeting attendees. Developing a plan may be a starting point (Capital to Capital Trail was successful because of this). Developing regional design standards to connect paths/trails across localities.
  - DRPT has design standards guidebook
  - VDOT has established design standards

# Abandoned Rail Right-of-Ways

- \* Churchland (Va. Port Auth.)
- \* Churchland High (CI Sup. Dep.)
- \* Seaboard (SHRT, Suffolk)
- \* Virginian (west and east of Downtown Suffolk)
- \* Seaboard (south of Suf. Mun. Air.)
- \* Atlantic & Danville (south of Portsmouth Blvd, Chesapeake)
- \* Norfolk Southern (Va. Beach)



# Method of Analyzing Candidates

- \* Objectively

- \* Forecast trail usage

- \* Application of existing model

- \* Forecast trail impact on usage of active transportation

- \* HRTPO Model based on impact of rail-trails around U.S.

- \* Forecast trail impact on real estate values

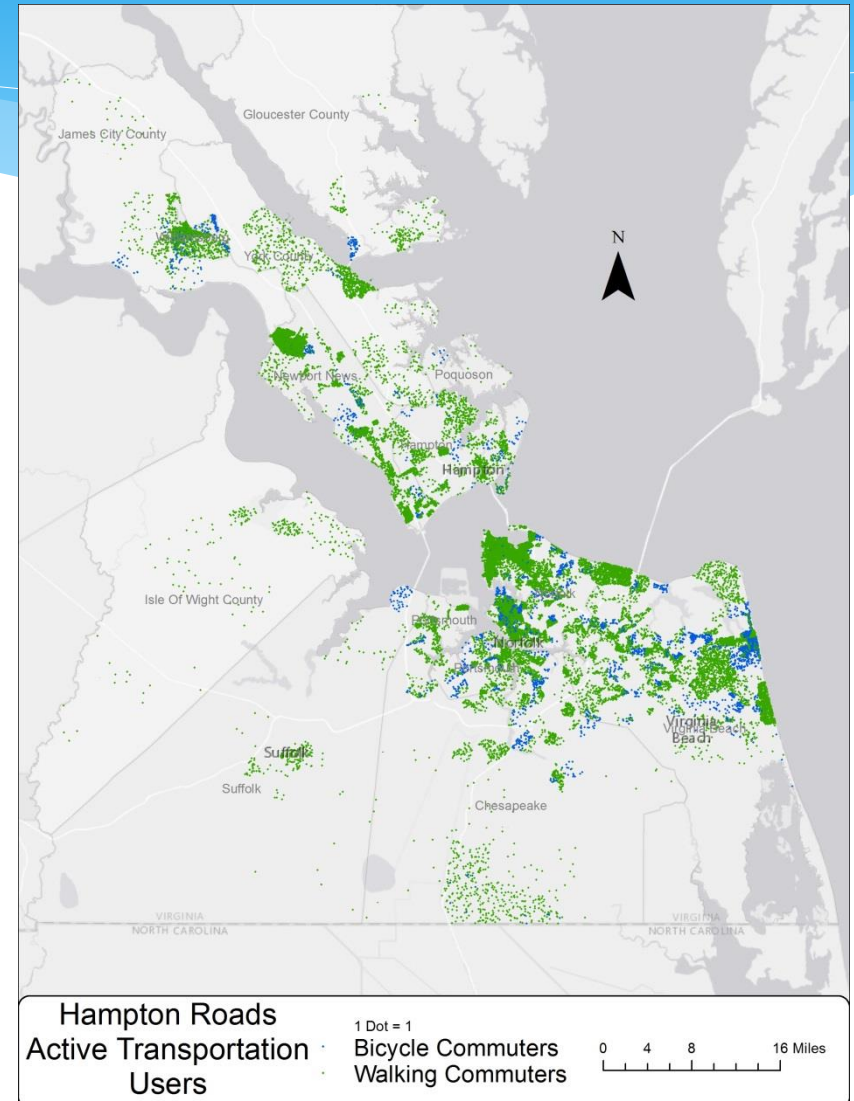
- \* Application of existing model

# Method of Analyzing Candidates

- \* Subjectively

- \* Map with layers:

- \* Abandoned rail right-of-ways (candidate rail-trail locations)
- \* Parks
- \* Population
- \* Employment
- \* Existing active trans facilities
- \* Existing transit facilities
- \* Schools
- \* Existing active trans users



# Next Steps

- \* Stakeholder meeting
  - \* Friday Nov. 13, Regional Building, 9:30am
- \* Draft report
  - \* Wednesday Jan. 6, TTAC

# TTAC Active Trans Subcommittee

- \* Proposed subcommittee
  - \* Building on regional work
    - \* Active Transportation scan
    - \* Signature Paths
    - \* Bike/Ped Safety
  - \* 2 subcommittee voting members per locality
    - \* At least one member per locality must be a voting member of TTAC
  - \* Unlimited others on mailing list
  - \* Vote to establish subcommittee at Jan. TTAC