



Presented to TTAC
Greg Grootendorst
Chief Economist, HRPDC
May 3, 2017

HAMPTON ROADS 2045

Socioeconomic Forecast

Why do the forecast

- Serves as input data for the HRTPO 2045 Long-Range Transportation Plan
- Provides an impartial and consistent set of socioeconomic projections that can assist organizations when planning for the region's future

What is included in the forecast

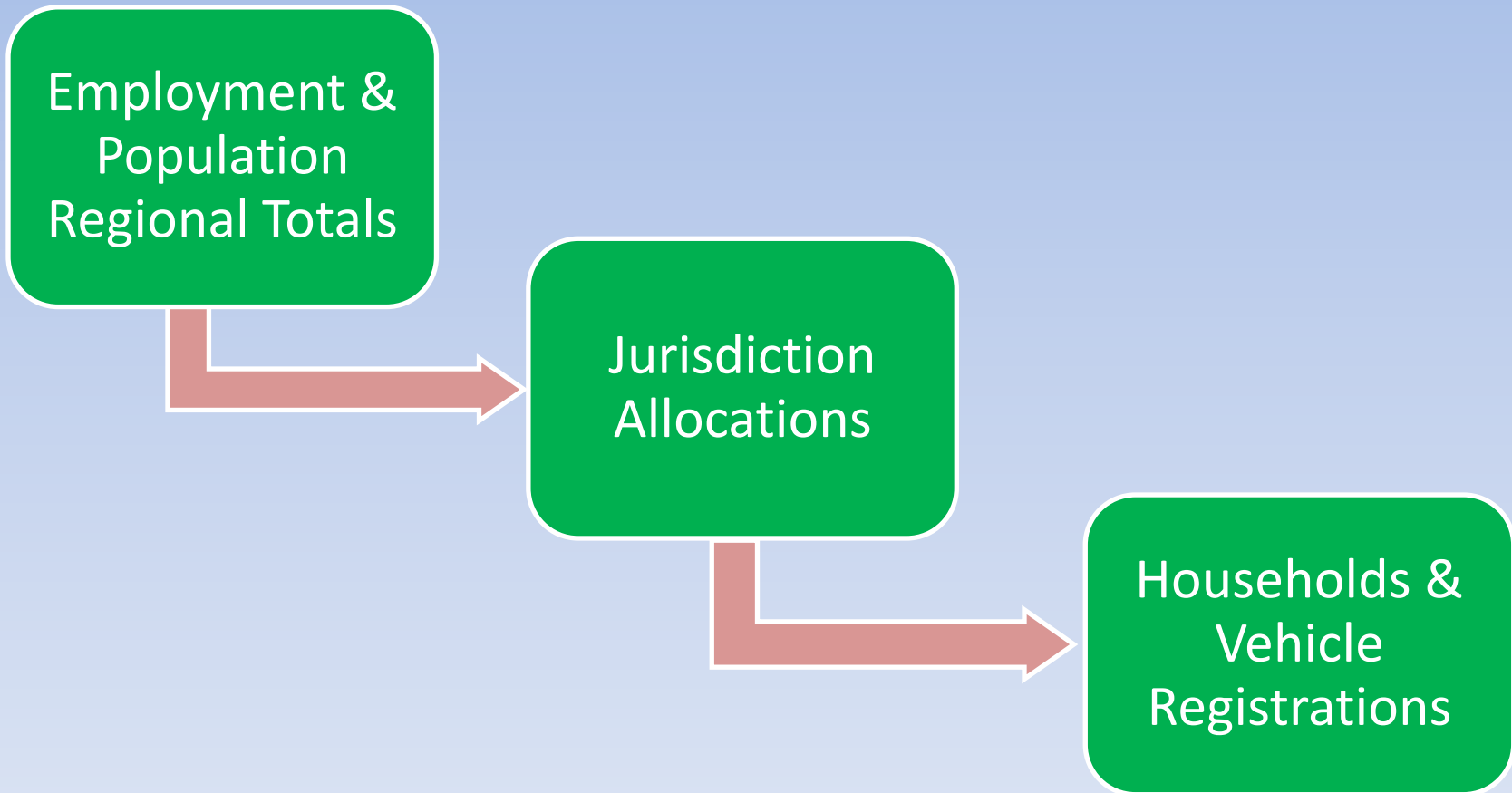
- Population
- Employment by place of residence
- Employment by place of work
 - Retail
 - Industrial
 - Office
 - Other
- Households
- Passenger Vehicle Registrations

Forecast Process

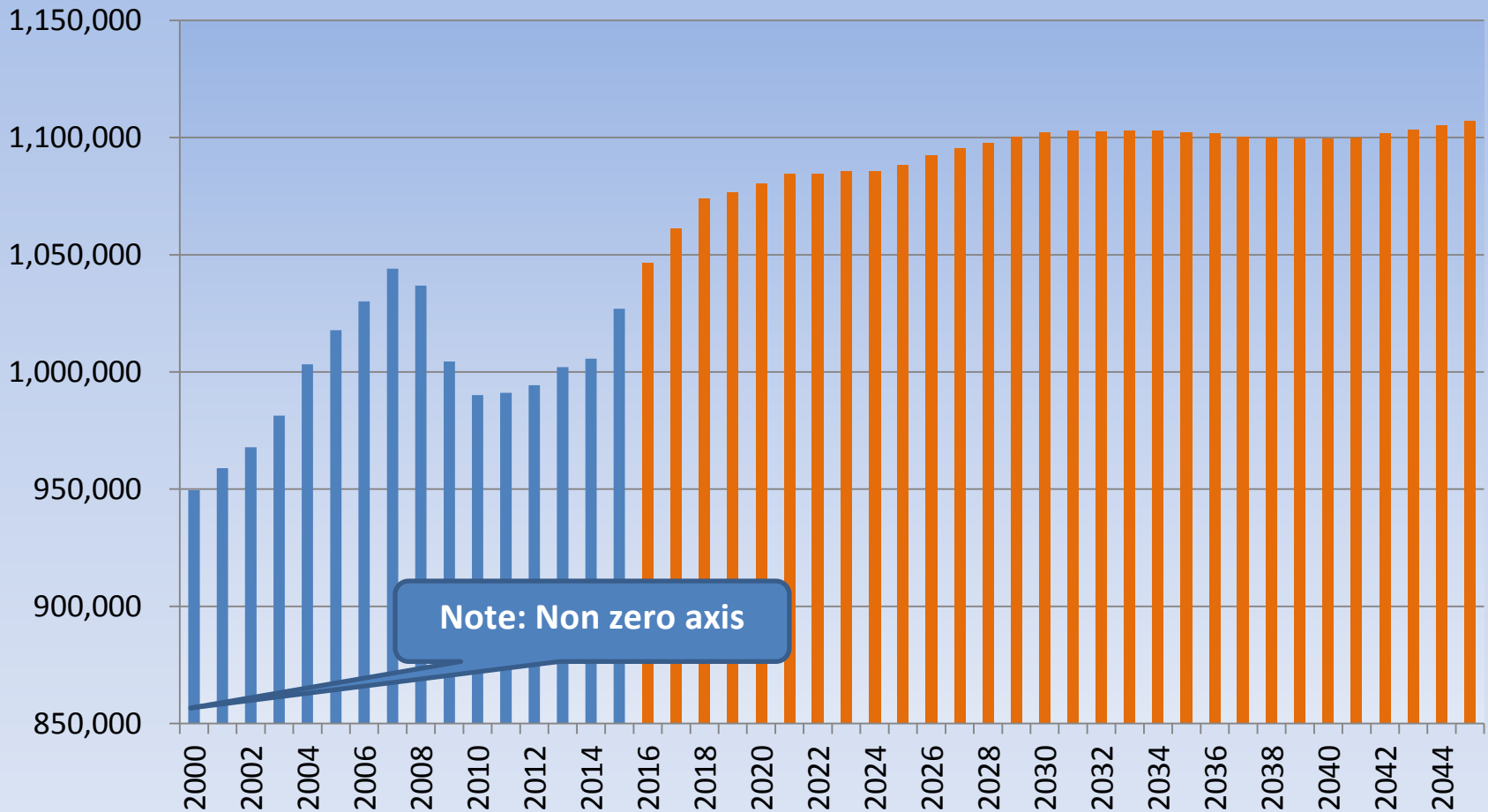
Regional Control Totals

1. Literature Review of Forecasting Techniques
2. Review Best Practices
3. Begin Data Collection
 - Raw Data
 - Input from Localities
 - Research Assumptions
 - Model Inputs
4. Produce Draft Control Totals
5. Produce Draft Jurisdiction Totals
6. Review Draft with Planning Staff/TTAC
7. Present Control Totals for Approval

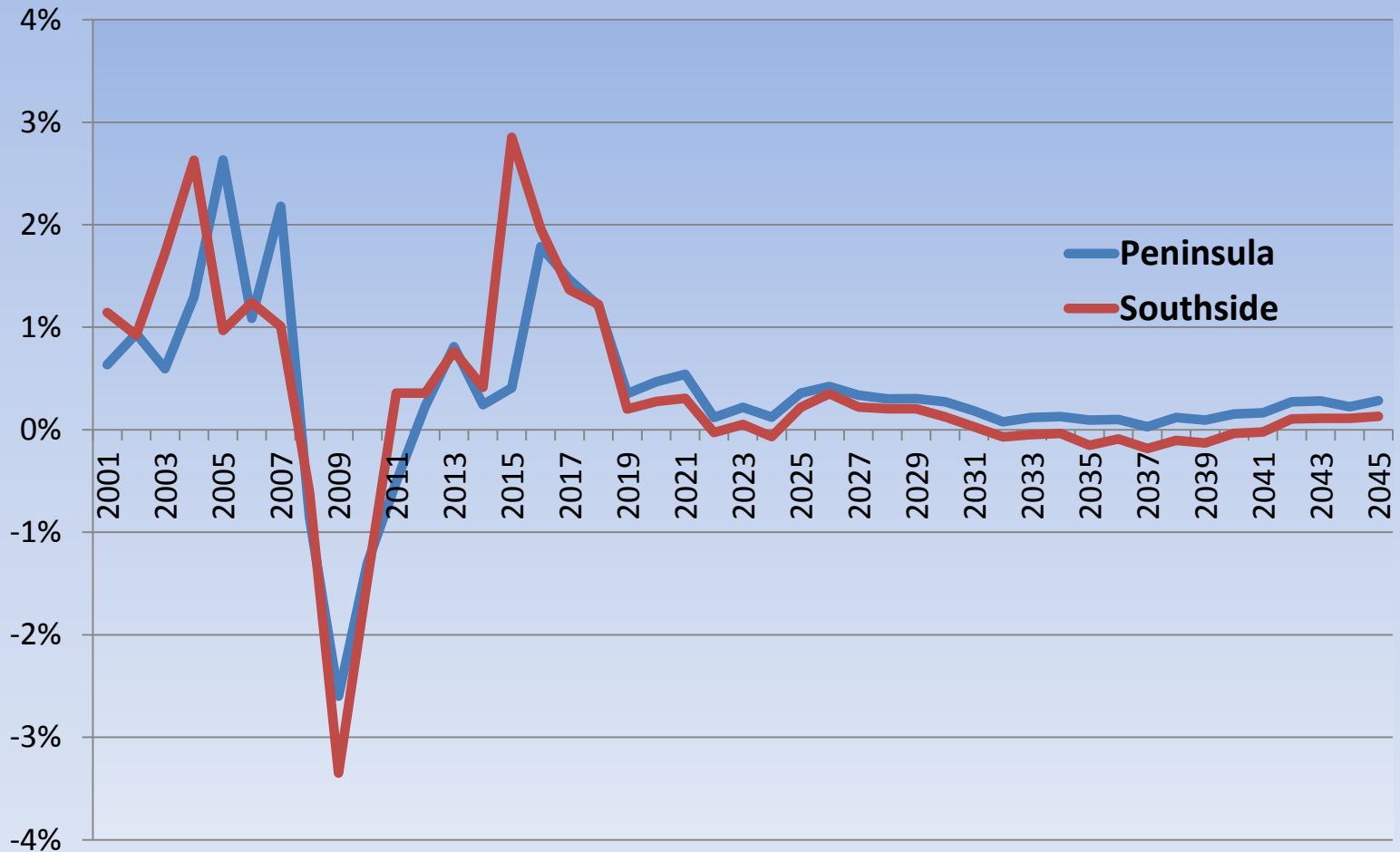
Forecast Methodology



Projected Employment in Hampton Roads



Projected Employment Growth, Southside and Peninsula

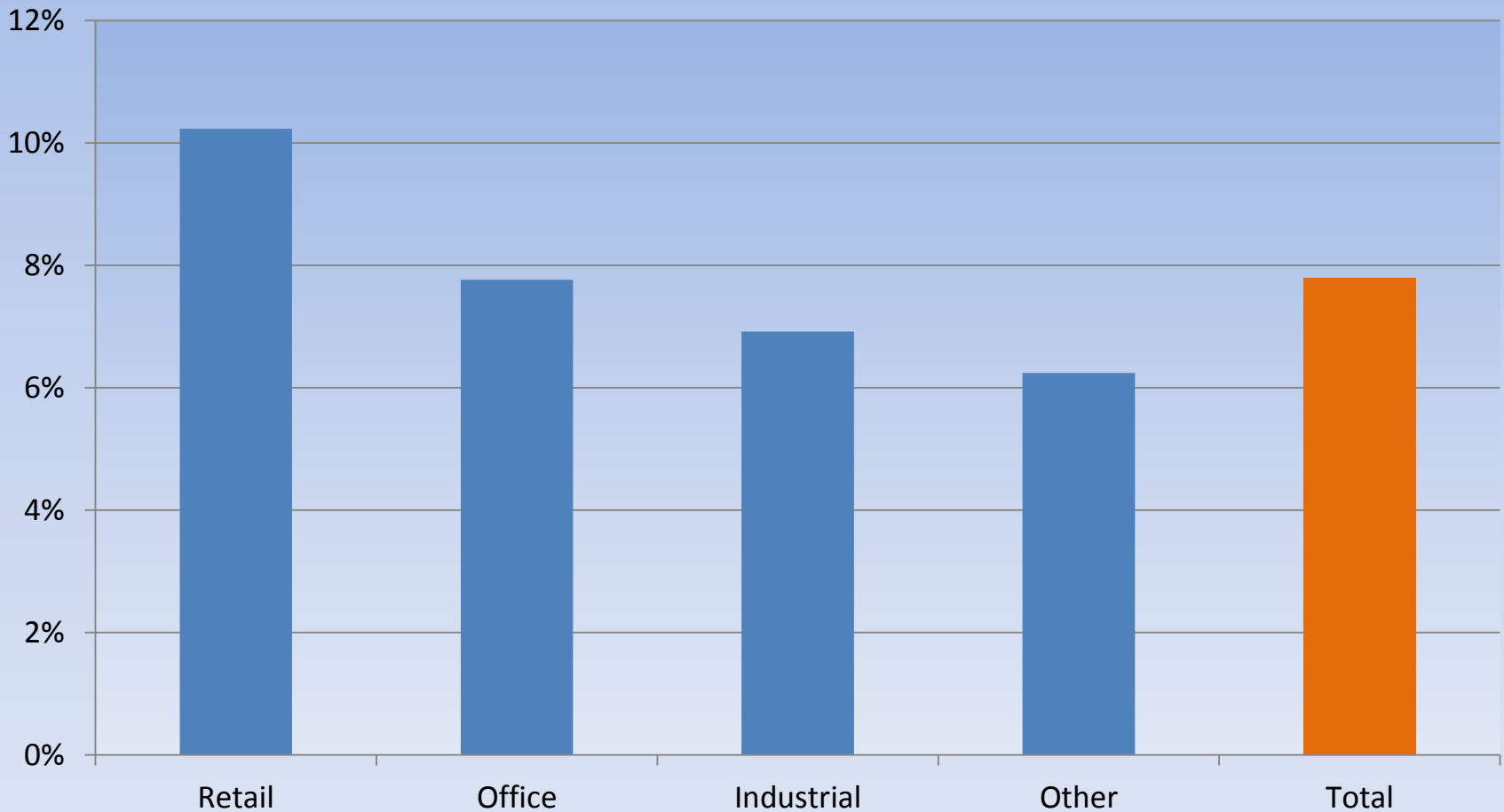


Employment Categories

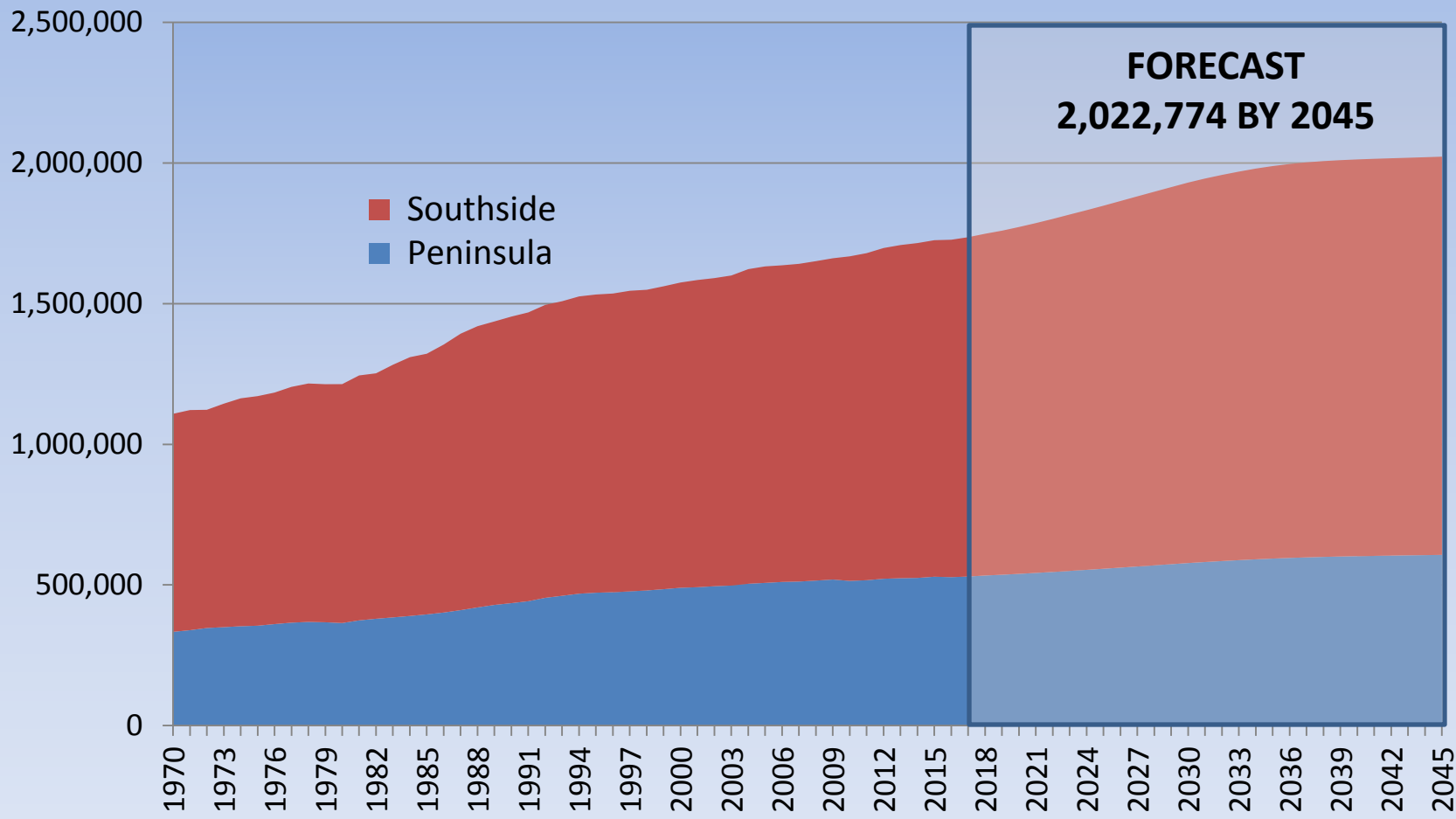
| Industry Sector | 2-Digit NAICS* | Retail | Office | Industrial | Other |
|---|----------------|--------|--------|------------|-------|
| Agriculture, Forestry and Fisheries | 11 | | | 100% | |
| Mining | 21 | | | 100% | |
| Construction | 23 | | 10% | 90% | |
| Manufacturing | 31,32,33 | | 10% | 80% | 10% |
| Transportation | 48 | | 10% | 80% | 10% |
| Communications, Utilities | 22 | 10% | 10% | 70% | 10% |
| Wholesale Trade | 42 | 40% | 10% | 20% | 30% |
| Retail Trade | 44,45 | 90% | 10% | | |
| Warehousing | 49 | 10% | 20% | 20% | 50% |
| Information | 51 | | 60% | 10% | 30% |
| Finance, Insurance, Real Estate | 52,53,55 | | 100% | | |
| Administration & Support | 56 | 30% | 30% | 10% | 30% |
| Personal Services | 72,81 | 40% | 30% | 10% | 20% |
| Entertainment, Recreation | 71 | 30% | 10% | | 60% |
| Health Services | 62 | 30% | 30% | 10% | 30% |
| Educational Services | 61 | | 20% | | 80% |
| Other Professional and Related Services | 54 | | 90% | | 10% |
| Public Administration | 92 | 10% | 40% | 20% | 30% |

* North American Industrial Classification System

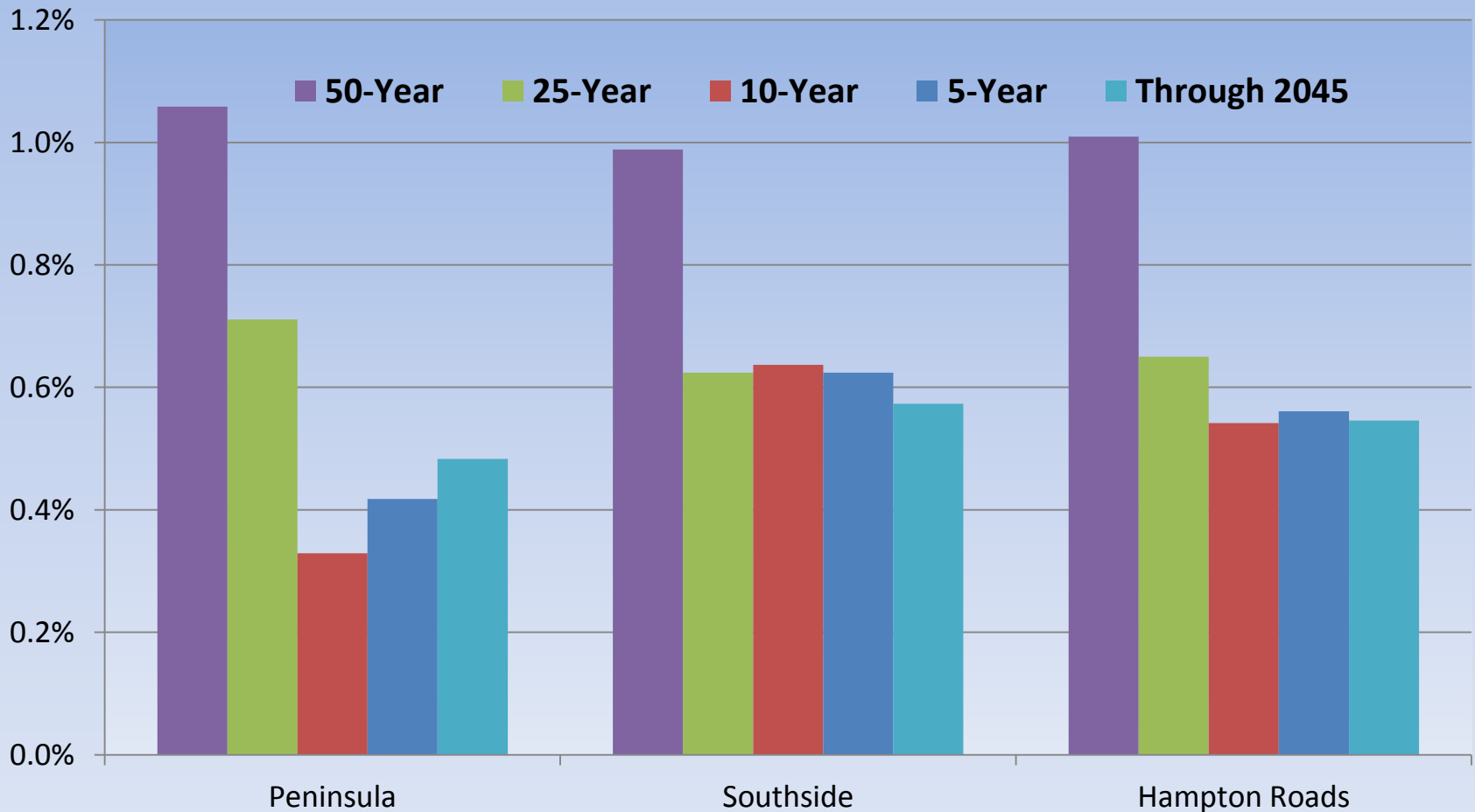
Employment Growth Forecast by Category



Hampton Roads Population Growth Through 2045



Annualized Population Growth Rates

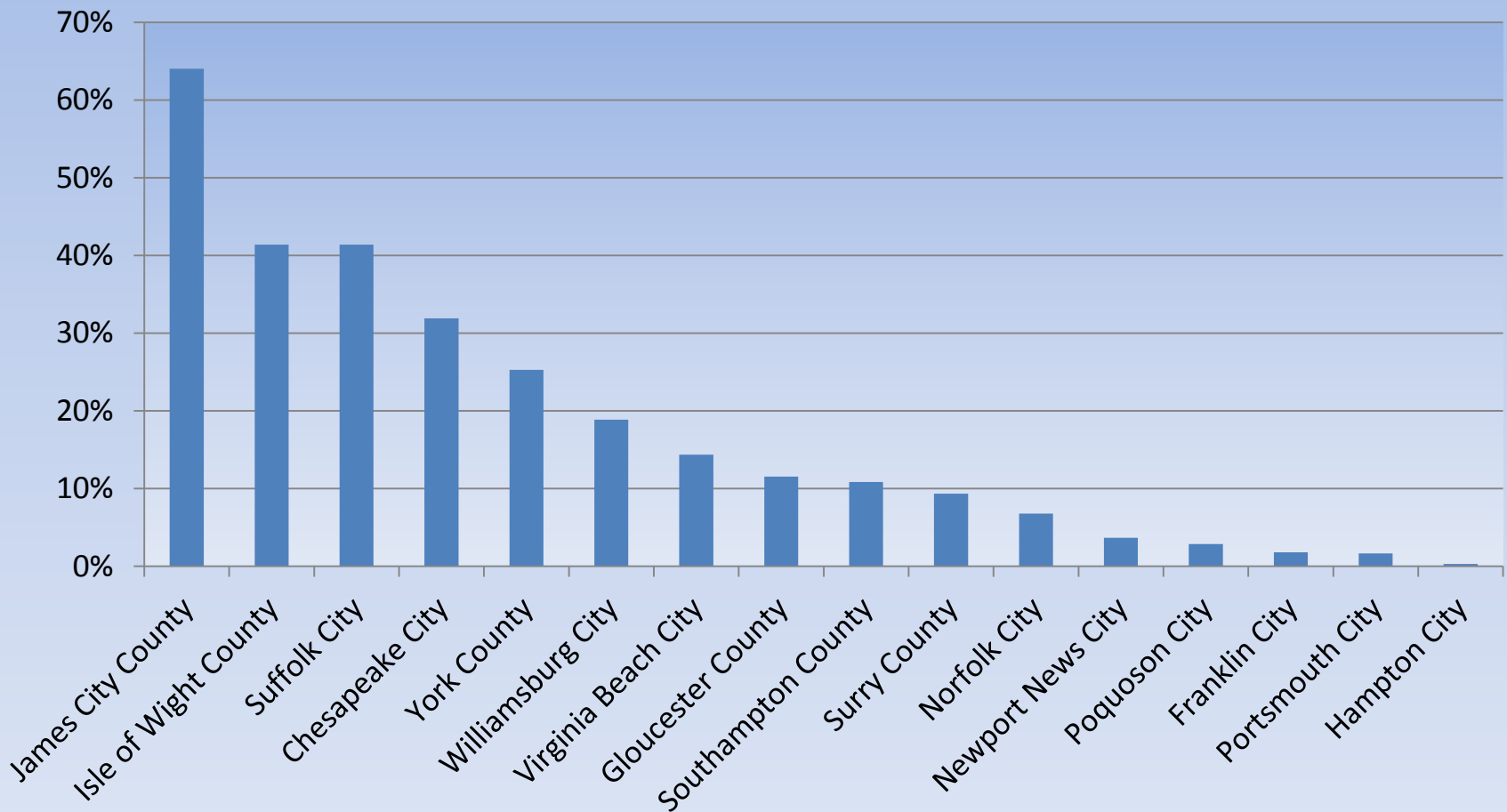


Jurisdiction Draft Population Forecast for 2045

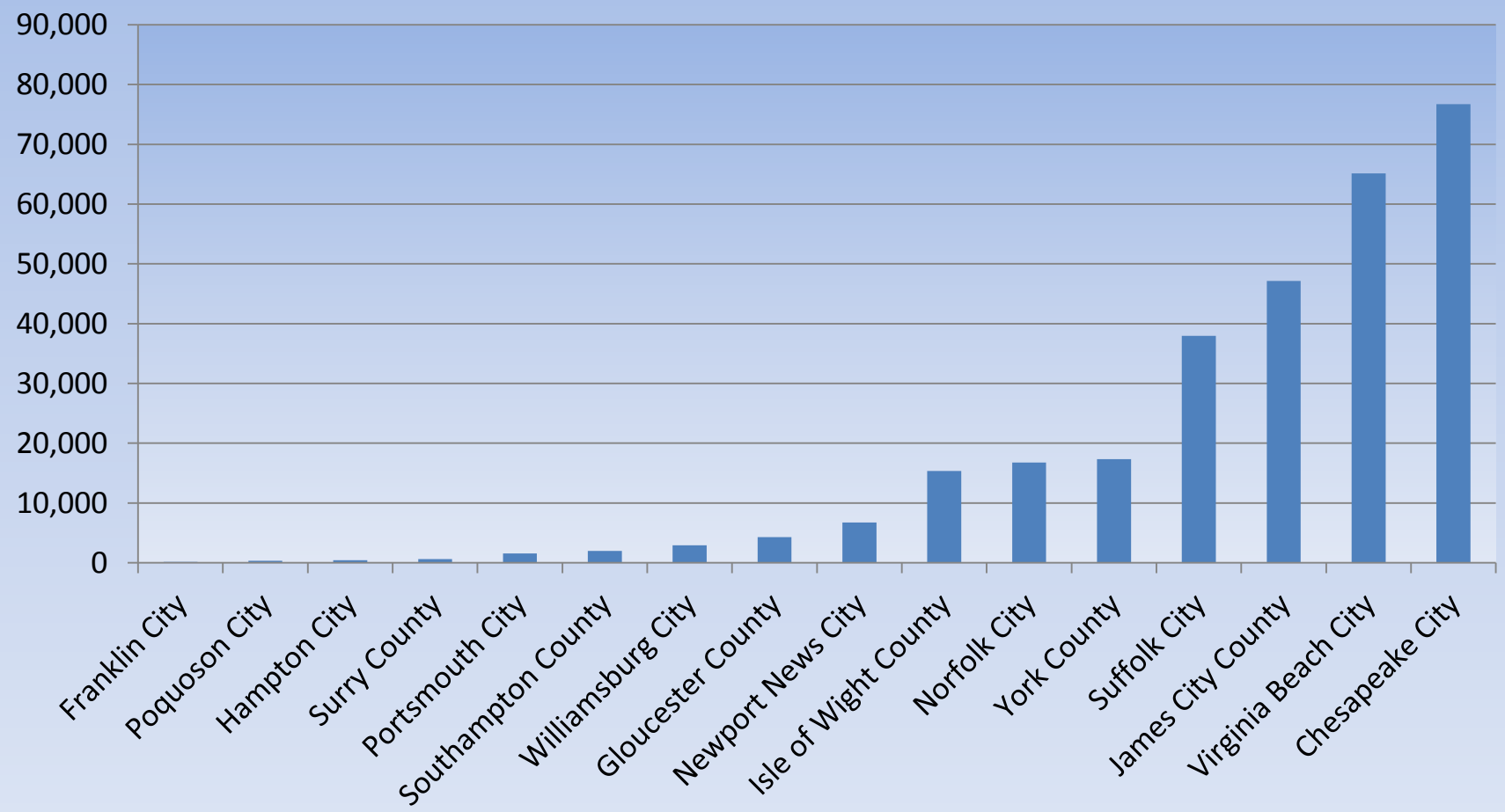
| | 1970 | 1980 | 1990 | 2000 | 2010 | 2015 | Forecast 2045 |
|----------------------|------------------|------------------|------------------|------------------|------------------|------------------|------------------|
| Southside | 775,253 | 849,550 | 1,018,986 | 1,085,471 | 1,152,606 | 1,196,615 | 1,416,015 |
| Chesapeake | 89,580 | 114,486 | 151,982 | 199,184 | 222,209 | 238,283 | 317,206 |
| Franklin | 6,880 | 7,308 | 7,864 | 8,346 | 8,582 | 8,535 | 8,751 |
| Isle of Wight Co. | 18,285 | 21,603 | 25,053 | 29,728 | 35,270 | 36,438 | 52,417 |
| Norfolk | 307,951 | 266,979 | 261,250 | 234,403 | 242,803 | 247,189 | 263,837 |
| Portsmouth | 110,963 | 104,577 | 103,910 | 100,565 | 95,535 | 96,874 | 97,752 |
| Southampton Co. | 18,582 | 18,731 | 17,550 | 17,482 | 18,570 | 18,551 | 20,218 |
| Suffolk | 45,024 | 47,621 | 52,143 | 63,677 | 84,585 | 90,426 | 129,682 |
| Surry Co. | 5,882 | 6,046 | 6,145 | 6,829 | 7,058 | 6,819 | 7,374 |
| Virginia Beach | 172,106 | 262,199 | 393,089 | 425,257 | 437,994 | 453,500 | 518,777 |
| Peninsula | 333,140 | 364,449 | 435,197 | 481,330 | 513,704 | 529,162 | 606,759 |
| Gloucester Co. | 14,059 | 20,107 | 30,131 | 34,780 | 36,858 | 37,072 | 41,252 |
| Hampton | 120,779 | 122,617 | 133,811 | 138,437 | 137,436 | 138,626 | 137,896 |
| James City Co. | 17,853 | 22,339 | 34,859 | 48,102 | 67,009 | 73,325 | 120,741 |
| Newport News | 138,177 | 144,903 | 171,439 | 180,150 | 180,719 | 183,454 | 189,962 |
| Poquoson | 5,441 | 8,726 | 11,005 | 11,566 | 12,150 | 12,359 | 12,637 |
| Williamsburg | 9,069 | 10,294 | 11,530 | 11,998 | 14,068 | 14,860 | 18,341 |
| York Co. | 27,762 | 35,463 | 42,422 | 56,297 | 65,464 | 69,466 | 85,930 |
| Hampton Roads | 1,108,393 | 1,213,999 | 1,454,183 | 1,566,801 | 1,666,310 | 1,725,777 | 2,022,774 |

Source of historical data: U.S. Census Bureau & Weldon Cooper Center

Forecast of Jurisdiction Growth Rates from 2016 to 2045



Forecast of Population Increase from 2016 to 2045



Next Steps

- May 12th: Send out complete draft socioeconomic forecast for review
- May 31st: Receive submitted comments
- June 7th: Present submitted comments to TTAC
- July 5th: Present final socioeconomic forecast to TTAC
- July 20th: Present socioeconomic forecast to HRTPO board
- Provide localities with jurisdiction control totals for assignment to TAZs

Questions

Greg Grootendorst

Hampton Roads Planning District Commission

ggrootendorst@hrpdca.gov

757.420.8300