

Agenda
HRTPO Freight Transportation Advisory Committee
March 27, 2019
The Virginia Port Authority Waterside Conference Room
10:30 a.m.

- I. Call to Order by Chairman Pro-temps
- II. Public Comment Period (5 minutes)
Members of the public are invited to address the FTAC with each speaker limited to three minutes.
- III. Approval of the January 30, 2019 Minutes (5 minutes)
Action Requested
- IV. 2045 LRTP Candidate Project Schedule Update (45 minutes)
Presented by HRTPO staff
- V. Project Prioritization Tool Review and Approval Update (30 minutes)
Presented by Dale Stith, HRTPO
- VI. Future Meeting Topics and Action Items (5 minutes)
- VII. Next Meetings:
May 14, 2019
July 24, 2019
September 25, 2019
November 20, 2019 (subject to change)
- VIII. Adjournment (targeted for 12:00 p.m.)

Agenda Item III. Minutes
Freight Transportation Advisory Committee
January 30, 2019

Chairman Larry Ewan called the HRTPO Freight Transportation Advisory Committee (FTAC) to order at 10:32 am in the Waterside Conference room at the Virginia Port Authority, with the following in attendance:

Members in Attendance:

Larry Ewan (Ewan & Associates)
Mike Abbott
Rick Morris (Canon Virginia)
David White (Virginia Maritime Association)
Yakong Wong (Huntington Ingalls)

Members Not Present:

Patricia Haver (Norfolk Southern)
Keith Helton (Givens Transportation)
Chris Stolle (HRTPO)

I. CALL TO ORDER and INTRODUCTION

The meeting was called to order by Chairman Ewan at 10:32 am. Introductions were made by everyone in the room. The Chairman welcomed Yakong Wong, the newest member, who provided the FTAC with his current role and responsibilities with Hunting Ingalls Ship Building.

II. PUBLIC COMMENT PERIOD

There were no public comments.

III. APPROVAL OF PREVIOUS MEETING'S MINUTES

Chairman Ewan presented the December 12, 2018 minutes and asked for a motion to approve. Mr. White Moved to approve the minutes as written; seconded by Mr. Abbott. The Motion Carried. Everyone was informed that all the presentations will be posted on the HRTPO for download. Also, a link will be provided in the minutes.

IV. REGIONAL ECONOMIC DEVELOPMENT SITES INVENTORY

https://www.hrtpo.org/uploads/docs/P3-Site_Readiness.pdf

Mr. Smith gave a presentation on the regional initiative to identify mega sites within Hampton Roads that could be leveraged to attract economic development opportunities. He outlined the different tier levels of site readiness and explained the standard outlined by the Virginia Economic Development Partnership (VEDP) that provide a consistent type of information for attracting new business. Mr. Smith indicated companies have evaluated Hampton Roads but ultimately selected other location due to lack of site-ready areas.

Development-ready sites are identified in five tier levels. Each tier was described based on an established set of criteria. The study initially identifies sites within the Hampton Roads metropolitan planning area (MPA) that were a minimum of 100 acres, and then determined

which of these achieved a Tier 2 designation. A discussion among FTAC and staff noted that several municipalities (i.e. Norfolk, Portsmouth, and Chesapeake) did not have any Tier 2 sites. Mr. Smith indicated that based on the initial set of criteria, while these cities may have larger sites, they did not meet the Tier 2 compliance. Mr. Smith indicated that the next phase of the study would provide an assessment/evaluation to determine what steps are needed to bring more mega sites up to a Tier 2 or Tier 3 level.

V. REGIONAL CONNECTORS STUDY UPDATE

https://www.hrtpo.org/uploads/docs/P5-Regional_Connector_Study_Update.pdf

Dr. Ravanbakht (Regional Connectors Study Project Coordinator) provided an update on the Phase I study, which included a significant amount of stakeholder involvement to include both municipalities and the public. Dr. Ravanbakht provided key findings in the Stakeholders Interviews which identified that tolls value were not translating to reduced commute times, unpredictability of traffic time, lack of transit options (more coverage/frequency), HOV-HOT lanes are not attractive to sailors and lower income commuters, connectivity issues, and the lack of collaboration of jurisdictions.

Dr. Ravanbakht indicated that there were advantages and disadvantages of our region along with strengths and weaknesses. Dr. Ravanbakht noted that while the water supports several strengths (tourism and military), the water also created a geographic obstacle for regional connectivity.

Dr. Ravanbakht indicated that as part of Phase I, stakeholders identified additional regional segments to be reviewed as part of the Study that included improving Route 17, a separate/adjacent tunnel out of NIT, a new water crossing on east of Williamsburg to connect US 17, I-664 to Isle of Wight, ferry service and I-86 to NC. These segments would be evaluated in the next Phase of the study. A copy of the regional survey results was distributed with the agenda and would be available on the HRTPO website.

Dr. Ravanbakht also provided a summary of the statically valid survey results, which included:

- Participants were mostly content with commute but transportation is still an issue. Congestion and the commute between the Peninsula and the Southside. Housing and employment decisions are made to avoid tunnel traffic.
- Results from participants also expressed concerns regarding the need to reduce crime, faster traffic routes, long term employment, and the aging infrastructure.

Dr. Ravanbakht indicated that the Regional Connectors Study (RCS) would also incorporate scenario planning Phase 2. Ms. Stith provided a brief update of scenario planning and how it would be integrated into the RCS as well as the region's 2045 LRTP. Overview outline how various "future" would test the transportation network to include a baseline scenario with two alternative futures. Ms. Stith indicated that the future varies in driver type, socio-economic data and travel. As part of the discussion, FTAC inquired if one of the scenarios would include sea level rise and Ms. Stith noted that sea level rise was being evaluated as part of the regional prioritization update and would also be address as a sustainability metric. Ms. Stith indicated that the scenario planning process would take approximately two years with the alternative scenarios being defined by end of year/early next year. HRTPO will be provided ongoing updates of the project and gain FTAC input.

VI. PROJECT PRIORITIZATION TOOL REVIEW AND APPROVAL UPDATE

Ms. Stith provided a brief update of the how the tool was used in the overall 2045 process and shared that staff was working to include the FTAC recommendation and incorporate weighting updates to the various metrics. Ms. Stith indicated that these changes would be presented to the HRTPO Board for approval in the next several months.

VII. 2045 LRTP CANDIDATE PROJECT SCHEDULE UPDATE

https://www.hrtpo.org/uploads/docs/P7-2045_LRTP_Candidate_Projects.pdf

Ms. Stith provided an update of the overall process for the regional to maintain a fiscally constrained blue print that is updated every 5 years. Ms. Stith indicated that the 2040 LRTP started with an initial list of 200 projects that were evaluated and that only 160 were included in the final constrained plan with the remain projects included in the Vision Plan. The near-term step for the 2045 plan would be to collect the candidate projects for review, which would include input from FTAC. The discussion noted these projects may identify freight bottlenecks. A question was raised if the Patriots Crossing is a project being studied in the RCS and Ms. Stith confirmed that it was in the RCS planning effort.

VIII. SMART SCALE – PRELIMINARY RESULTS AND FUTURE OPPORTUNITIES

https://www.hrtpo.org/uploads/docs/P8-SMART_SCALE_Results.pdf

Mr. Mihaly provided a brief update of Round 3 process update Hampton Roads that included the schedule, number of submittals and available funding. Mr. Mihaly shared the results of the Hampton Roads Bridge Tunnel scoring sheet, which was the received the top score in eight of the categories and received \$200 million in funding. Mr. Mihaly indicated that Hampton Roads did very well in Smart Scale allocations with 26 projects funded and received 38.4% of all the funding.

Mr. Mihaly indicated that the Commonwealth Transportation Board February meeting would review these projects.

IX. USDOT TRUCK PARKING – INPUT OPPORTUNITY

Ms. Nelson shared the opportunities to collaborate with various partner to leverage data between various organizations. Ms. Nelson noted efforts associated with USDOT, Federal Highways, and MARAD relative to national issue of truck parking.

Chairman Ewan announced that the next meeting of the FTAC would be on March 27, 2019 in the Port of Virginia Board Room and that the May meeting would be rescheduled from May 15 to May 14 (calendar request to follow).

With no further discussion, the meeting adjourned at 12:05 p.m.

Agenda Item IV. 2045 LRTP Candidate Project Nominations
Freight Transportation Advisory Committee
March 27, 2019

As part of the development of the 2045 LRTP, HRTPO staff must consider transportation alternatives to effectively address future regional needs based upon projected population and employment growth. In preparation for this task, HRTPO staff will be asking the FTAC for candidate transportation projects to be considered for inclusion in the 2045 LRTP at a future meeting.

Two attachments are included for the discussion on developing the freight/intermodal project nominations:

1. a table of freight bottlenecks on the arterial and interstate systems taken from the HRTPO study; and
2. three maps that cover the Hampton Roads Peninsula, Southside, and an enlargement of the Beltway Area.

The bottlenecks table highlights in red, orange or yellow the facilities with impacts of high, medium or lower truck delays during the weekday morning and evening peak periods. The information in the table also notes if the projects are completed or under construction, funded in the 2040 plan, or identified as a 2040 plan study or vision project.

The three maps reflect the corridors with high, medium or low weekday peak delay for trucks as noted in the same red, orange and yellow colors as on the bottleneck/truck delay table. Sites identified in the HRPDC site readiness study have also been added as have the top freight employers by industry sector and Port of Virginia warehouse customer locations (see map key for details).

The FTAC will be asked to take action at the May 14 meeting to recommend a list of projects to be nominated as candidate projects for the 2045 plan. The map attachments will be the starting point for the March 27 discussion and will focus on the following questions and others generated by the FTAC members:

- Are all regional freight gateways considered?
- Are the local freight corridors considered?
- Does the map reflect impacts of toll vs. non-toll facilities as it relates to congestion?
- What projects are needed to create access to new economic opportunities?
- What projects are missing?
- Have the priorities changed and are certain facilities less important? (This will be an important item in the May recommendation action.)
- Have we identified the needed first and last-mile connectors?
- Are rail bottlenecks identified and documented?
- Are we solving for congestion relief, facilitating economic opportunity or both?

HRTPO staff will brief the FTAC on this item.

Recommended Action: For information purposes at this time.

Hampton Roads - Peninsula

FREIGHT BOTTLENECKS

High Truck Delay

- 2040 LRTP/Study/No Plans
- Completed/Under Construction/Committed

Medium Truck Delay

- 2040 LRTP/Study/No Plans
- Completed/Under Construction/Committed

Low Truck Delay

- 2040 LRTP/Study/No Plans
- Completed/Under Construction/Committed

Top Freight Employers by Industry Sector

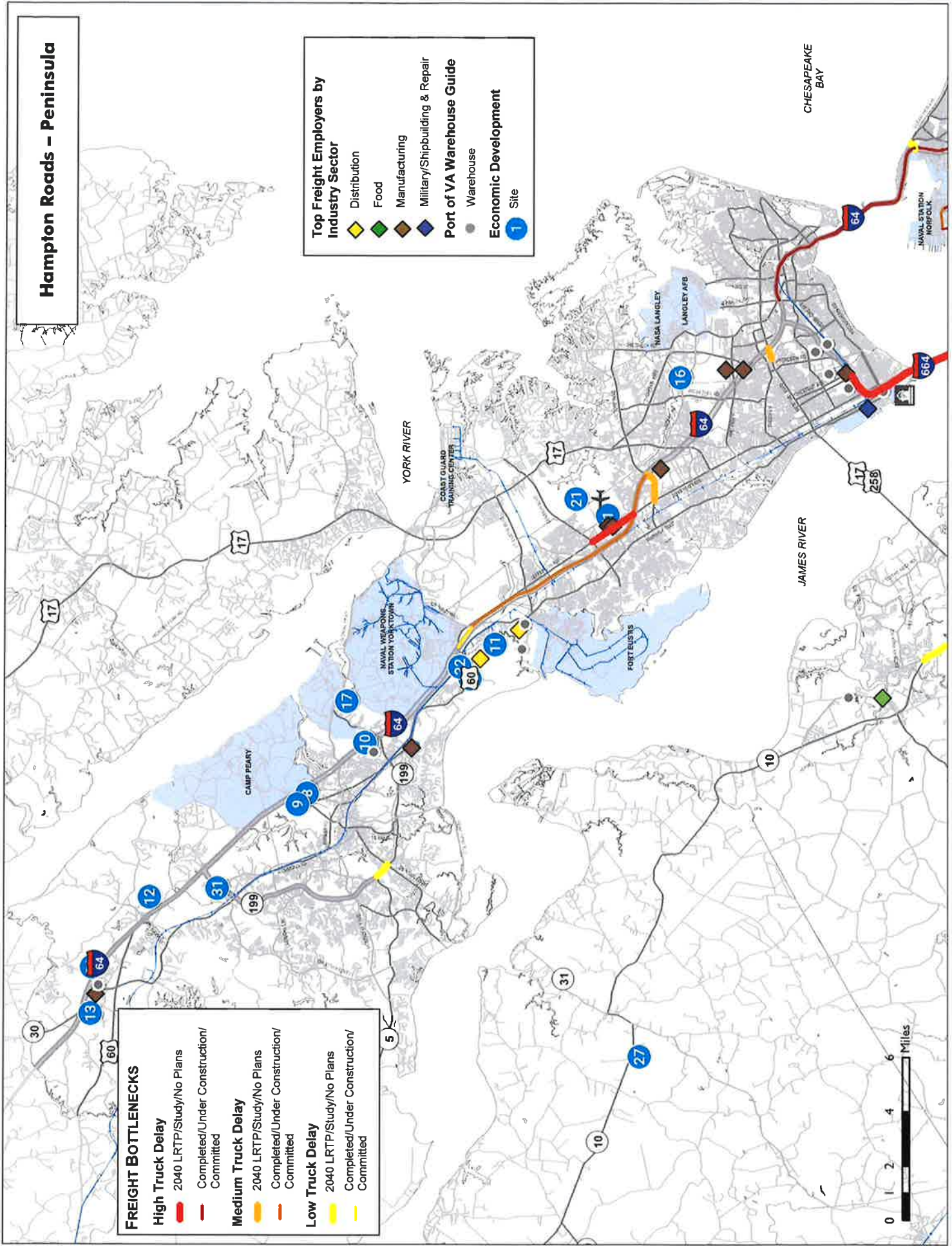
- ◆ Distribution
- ◆ Food
- ◆ Manufacturing
- ◆ Military/Shipbuilding & Repair

Port of VA Warehouse Guide

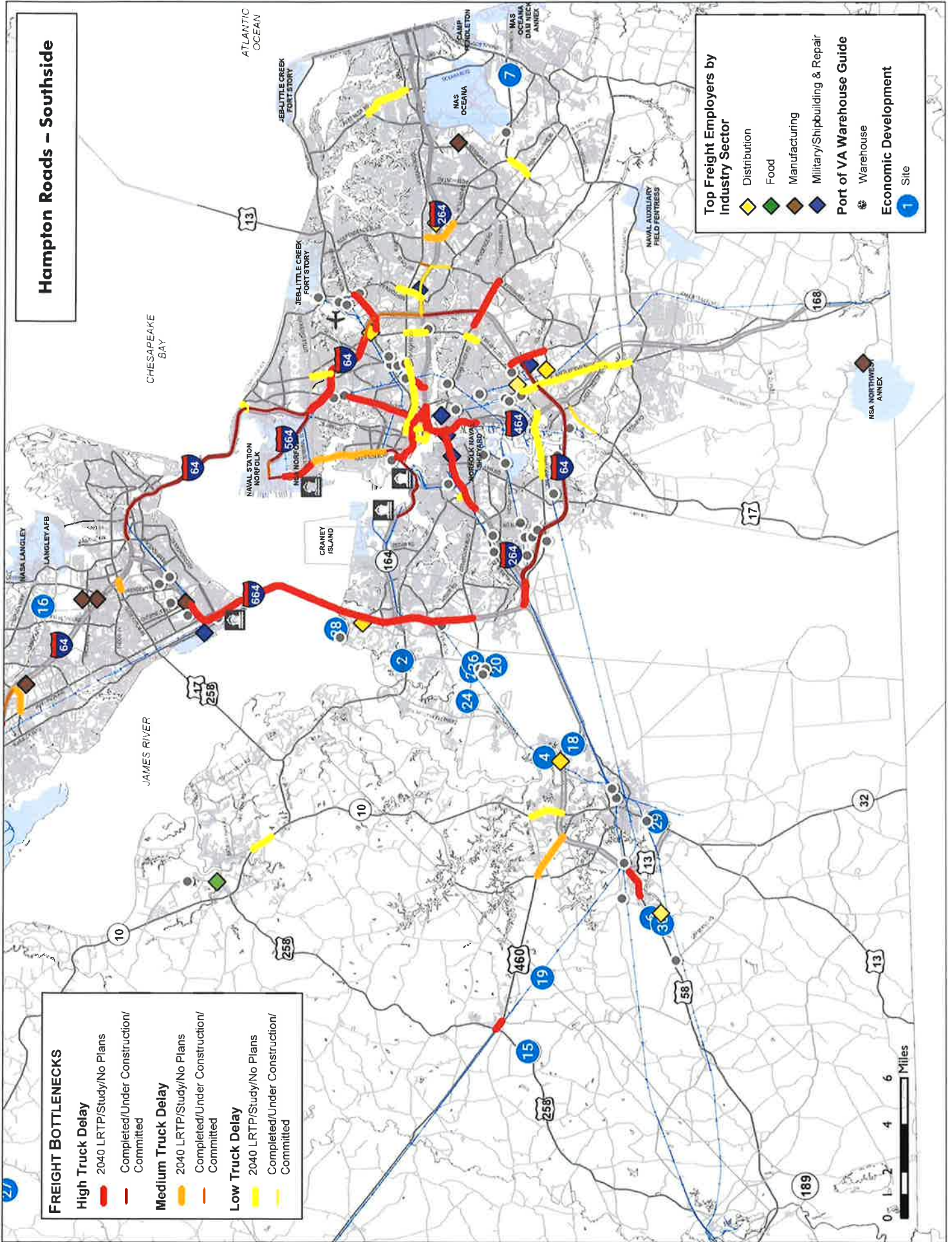
- Warehouse

Economic Development

- 1 Site



Hampton Roads - Southside



FREIGHT BOTTLENECKS

High Truck Delay	2040 LRTP/Study/No Plans
Completed/Under Construction/Committed	
Medium Truck Delay	2040 LRTP/Study/No Plans
Completed/Under Construction/Committed	
Low Truck Delay	2040 LRTP/Study/No Plans
Completed/Under Construction/Committed	

Top Freight Employers by Industry Sector

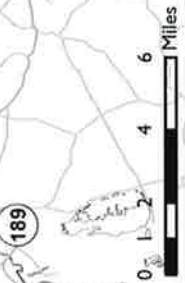
- Diamond: Distribution
- Diamond: Food
- Diamond: Manufacturing
- Diamond: Military/Shipbuilding & Repair

Port of VA Warehouse Guide

- Circle: Warehouse

Economic Development Site

- Circle: 1



Hampton Roads Beltway

CHESAPEAKE BAY

FREIGHT BOTTLENECKS

High Truck Delay

- 2040 LRTP/Study/No Plans
- Completed/Under Construction/Committed

Medium Truck Delay

- 2040 LRTP/Study/No Plans
- Completed/Under Construction/Committed

Low Truck Delay

- 2040 LRTP/Study/No Plans
- Completed/Under Construction/Committed

Top Freight Employers by Industry Sector

- Distribution
- Food
- Manufacturing
- Military/Shipbuilding & Repair

Port of VA Warehouse Guide

- Warehouse

Economic Development

- Site



Freight Bottlenecks - Arterials

Juris Name	Facility Name	Segment From	Segment To	Dir	2014 Total Wkly Truck Delay per mile (hrs/mi)				Completed/Under Construction	Funded in 2040 L RTP	L RTP Study/Vision Plan	EIR/IAC Project, LRTP Project (Committed, Construction, Local) or LRTP Vision Project with Project ID
					NB/EB AM Peak Period	SB/WB PM Peak Period	NB/EB	SB/WB				
VB	INDIAN RIVER RD	PROVIDENCE RD	FERRILL PKWY	EW	0.1-1.8	0.4-3.3	0.4-9.8	0.8-3.3		✓		L RTP Construction (Indian River Rd at Kempsville Rd) 2040-170
PORT/NOR	WESTERN PAVY/MTT/HAMPTON BLVD	WEST NORFOLK RD	21ST ST	NS	0.8-4.9	0.2-1.4	0.2-1.4	0.3-3.3	✓			L RTP Completed (DIT/MTT/MILK Extension) 2040-248
NOR	HAMPTON BLVD	21ST ST	LITTLE CREEK RD	NS	0.6-1.2	0.3-1.2	0.3-0.9	0.2-0.9				Intermodal Project (Hampton Blvd at Tml Blvd) 2040-114
NOR	HAMPTON BLVD	LITTLE CREEK RD	INTERMODAL CONNECTOR	NS	0.6-2.6	0.3-1	0.3-0.8	0.2-0.5		✓		L RTP Committed (Intermodal Connector) 2040-243
NORVB	NORTHAMPTON BLVD	INTERMODAL CONNECTOR	ADM TAUSSIG BLVD	NS	2.6-3.3	1.0	0.8	0.5	✓			L RTP Committed (Intermodal Connector) 2040-243
SUF	ROUTE 58 (HOLLAND RD)	KEMPSVILLE RD	DIAMOND SPRINGS RD	EW	0.6-3	0.7-1.3	0.6-0.8	1.3-2.9		✓		L RTP Committed (Route 58-Holland Rd) 2040-139
NOR	BRAMBLETON AVE	COVE POINT DR	SUFFOLK BYPASS	EW	1.4	1.5	2.3	2.7		✓		L RTP Construction (Brambleton Ave) 2040-112
IW	ROUTE 460	HAMPTON BLVD	I-264	EW	1.7	1.8	1.9	2.5		✓		Study: US 460
SUF	ROUTE 460 (PRUDEN BLVD)	ROUTE 258	COURT ST (RTE 610)	EW	0.4-2.6	0.2-1.8	0.8-1.4	0.3-1.7				Study: US 460
CHES	GREENBRIER PKWY	LAKE PRINCE DR	SUFFOLK BYPASS	EW	0.9-0.9	0.9-1.2	1.2-1.2	1.4-1.9				I-64 Peninsula Widening - Segment I
NOR	BALLETINE BLVD	VOLVO PKWY	WOODLAKE DR	NS	0.5-1.4	0.2-0.3	0.7-1.4	1.2-2.4				L RTP Committed (Intermodal Connector) 2040-243
NOR	TIDEWATER DR	CITY HALL AVE	NORVIEW AVE	NS	0.2-1.3	0.1	0.2-0.7	0.4-2.2				
NN	JEFFERSON AVE	DENBIGH BLVD	I-64	NS	0.4-0.5	0.3-0.6	1.5-2.3	0.9-1.4	✓			
NOR	ADMIRAL TAUSSIG BLVD	HAMPTON BLVD	I-564	EW	0.9	1.9	0.3	1.2	✓			
NN	OYSTER POINT RD	JEFFERSON AVE	I-64	EW	0.1-0.2	0.3-0.7	0.1-0.2	1.7-1.9				
HAM	MERCURY BLVD	POWER PLANT PKWY	I-64	EW	0.2	1.4	0.3	1.7				
VB	INDEPENDENCE BLVD	HOLLAND RD	COLUMBUS ST	NS	0.5-1.1	0.2-0.4	0.8-1.6	0.4-1				L RTP Completed (Kempsville Rd Intersection at Princess Anne Rd) 2040-256
VB	WITCHDUCK RD	PRINCESS ANNE RD	I-264	NS	0.6	0.4	0.5	1.3	✓			Locally Funded (Witchduck Rd) No Proj ID
VB	WITCHDUCK RD	I-264	VA BEACH BLVD	NS	0.8	0.6	0.8	1.6	✓			
NOR	NEWTOWN RD	I-264	VA BEACH CL	NS	0.3-1.1	0.5-0.8	0.4-1	0.9-1.5		✓		Locally Funded (Newtown Rd) 2040-176
VB	NEWTOWN RD	NORFOLK CL	BAKER RD	NS	0.3	0.8	0.4	1.5				
NOR	BOUSH ST/WATERSIDE DR	ST PAULS BLVD	BRAMBLETON AVE	NS	0-0.1	0.1-0.1	1-1.5	0.3-0.3				
CHES	BATTLEFIELD BLVD	CEDAR RD	MILITARY HWY	NS	0.2-0.4	0.1-0.7	0.1-0.6	0.5-1.4				
CHES	MILITARY HWY/GILMERTON BRIDGE	CANAL DR	I-464	EW	0.2-0.9	0.2	0.4-0.6	0.7-1.1	✓			L RTP Completed (Gilmerton Bridge) 2040-231 & I-64/High Rise Bridge Widening
VB	MILITARY HWY	PROVIDENCE RD	INDIAN RIVER RD	NS	0.7	0.3	1.0	0.4				
NOR	MILITARY HWY	I-264	VA BEACH BLVD	NS	0.6	0.5	0.6	1.2				
NOR	MILITARY HWY	PRIN ANNE RD/NORTHAMPTON BLVD	I-64	NS	0.4	0.4	0.5	1.4	✓		✓	L RTP Committed (Military Highway Continuous Flow Intersection). Study: Military Hwy at I-64 -- New EB On-Ramp
JCC/MWB	ROUTE 199	JOHN TYLER HWY (RTE 5)	JAMESTOWN RD	EW	0.5	0.4	1.4	0.3		✓		Study: US 58 Corridor
SH	ROUTE 58	BUS RTE 58 W	CAMP PKWY (BUS RTE 58 E)	EW	0.5	0.6	0.7	1.3				
NOR	VA BEACH BLVD	MONTICELLO AVE	AZALEA GARDEN RD	EW	0.2-0.9	0.2-1.2	0.6-0.9	0.1-0.6				
PORT	FREDERICK BLVD	I-264	TURNPIKE RD	NS	0.6	0.6	0.7	1.2				
SUF	GODWIN BLVD	SUFFOLK BYPASS	KINGS FORK RD	NS	1.2	0.2	0.9	0.7				
NOR	CHESAPEAKE BLVD	I-64	LITTLE CREEK RD	NS	0.7-0.7	0.1-0.1	1.2-1.2	0.2-0.2				
NOR	NORTHAMPTON BLVD	MILITARY HWY	KEMPSVILLE RD	EW	0.5	0.6	0.6	1.2	✓			L RTP Committed (Military Highway Continuous Flow Intersection)
IW	BENNS CHURCH BLVD	ECL SMITHFIELD (RTE 644)	CHURCH ST 5	NS	0.5	1.0	0.8	1.1				
NOR	4TH VIEW ST	I-64	OCEAN VIEW AVE	EW	0.1	0.3	0.2	1.1				HRBT Widening
VB	DAM NECK RD	PRINCESS ANNE RD	HOLLAND RD	EW	0.7	0.1	0.2	1.1	✓			Locally Funded (Dam Neck Rd - Phase I) 2040-157
VB	FIRST COLONIAL RD	LASKIN RD	OLD DONATION PKWY	NS	0.3	0.4	0.4	1.0	✓			L RTP Construction (First Colonial Rd) 2040-164
NOR	FIRST COLONIAL RD	OLD DONATION PKWY	GREAT NECK RD	NS	0.3	0.4	0.4	1.0				
NOR	MONTICELLO AVE	ST PAULS BLVD	VA BEACH BLVD	NS	0.9	1.0	0.7	0.9				
NOR	ST PAULS BLVD	I-264 RAMP/MACARTHUR MALL	BRAMBLETON AVE	NS	0.6	0.5	1.0	0.5				
CHES	DOMINION BLVD	BAINBRIDGE BLVD	GREAT BRIDGE BLVD	NS	0.4	0.7	0.2	1.0	✓			L RTP Completed (Dominion Blvd) 2040-230

Freight Bottlenecks - Interstate Highways

Juris Name	Facility Name	Segment From	Segment To	Dir	2014 Total Wkly Truck Delay per mile (hrs/mi)						Completed/Under Construction	Funded in 2040	L RTP Study/Vision Plan	HRTAC Project, LRTP Project (Committed, Construction, Local) or LRTP Vision Project with Project ID
					AM Peak Period	PM Peak Period	NB/EB	SB/WB	NB/EB	SB/WB				
NN	I-64	RTÉ 143 (NORTH)	YORKTOWN RD	EW	0.3	0.1	1.3	0.1	0.1	0.1	✓			I-64 Peninsula Widening - Segment II
NN	I-64	YORKTOWN RD	OYSTER POINT RD	EW	0.0-4	0.1-0.7	0.1-1.8	0.1-1.4	0.1-1.4	0.1-1.4	✓	✓		I-64 Peninsula Widening - Segment I, Study: I-64 at Denbigh Blvd (Rte 173)
HAM/NOR	I-64/HRBT	ARMISTEAD AVE	I-564/LITTLE CREEK RD	EW	0.1-7.3	0.0-4	0.4-7.5	0.5-7	0.5-7	0.5-7				HRBT Widening
NOR	I-64	I-564/LITTLE CREEK RD	MILITARY HWY	EW	0.3-0.7	0.3-1.4	1.6-3.7	0.1-1.9				✓		LRTP Construction I-64 @ Northampton Blvd Interchange 2040-116
NOR	I-64	MILITARY HWY	I-264	EW	0.1-0.3	1.1-3.8	1.5-1.7	0.0-2						I-64/I-264 Interchange Improvements
NOR/WB	I-64	I-264	INDIAN RIVER RD	EW	0.1	2.7	1.3	1.7			✓			I-64 Southside and High Rise Bridge Widening/Bowers Hill Interchange
CHES	I-64	GREENBRIER PKWY	I-264&664	EW	0.1-0.4	0.2-6	1.5-5	0.1-3.4			✓			
CHES/SUF	I-664	I-64 & I-264	COLLEGE DR	EW	0.0-2	0.6-0.9	0.5-2.2	0.1-3.6						Parallel Project (HRBT Widening)
SUF/INN	I-664/MMMBT	COLLEGE DR	CHESTNUT AVE	EW	0.0-1	0.0-2	0.5-7.8	0.0-1						LRTP Completed (DTT/MTT/MLK Extension) 2040-248
CHES/NOR	I-464	POINDEXTER ST	I-264	NS	2.3-3.7	0.1-0.2	0.1-0.4	0.0-2						LRTP Completed (DTT/MTT/MLK Extension) 2040-248
PORT/NOR	I-264/DTT/BERKLEY BRIDGE	PORTSMOUTH BLVD	BRAMBLETON AVE	EW	0.4-2	0.2	0.2-5	0.3-3						
NOR/WB	I-264	I-64	WITCHDUCK RD	EW	0.1-0.1	0.2-0.3	1.2-1.4	0.5-1.1			✓			I-64/I-264 Interchange Improvements
NOR	I-564	ADMIRAL TAUSSIG BLVD	I-64	NS	1.2-2.7	0.0	0.0	0.0-5			✓			LRTP Committed (Intermodal Connector) 2040-243

**Agenda Item V. Project Prioritization Tool:
Recommendation on Relative Weight of Intermodal Elements**
Freight Transportation Advisory Committee
March 27, 2019

At the December 12, 2018 meeting the FTAC took action to recommend changes to the intermodal and freight elements for the HRTPO Project Prioritization Tool which is a key tool in the financially constrained long-range plan. The HRTPO staff is requesting input from the standing committees on the proposed relative weights for scoring projects are appropriate or if changes to the weighting should be considered by the HRTPO policy board.

Ms. Dale Stith, HRTPO, will brief the FTAC on this item.

Recommended Action: Action to recommend relative weights for intermodal projects in the 2045 long-range transportation plan.