

HJR756 Created the TPO's-a Statewide Association

Hampton Roads Transportation Planning Organization

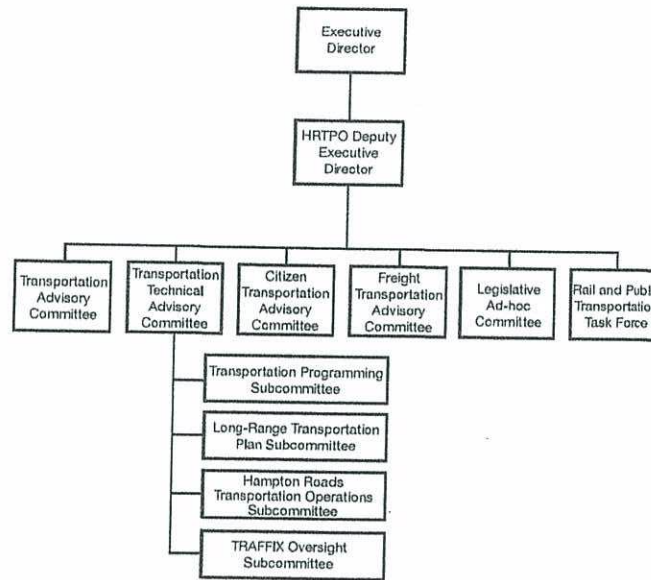
Virginia Beach City	Williamsburg City	York County	Suffolk City	Portsmouth City	Poquoson City	Norfolk City	Newport News City	James City County	Isle of Wight County	Hampton City	Gloucester County	Chesapeake City
1) E 2) Alt. E 3) C.M. N/V	1) E 2) Alt. E 3) C.M. N/V	1) E 2) Alt. E 3) C.A. N/V	1) E 2) Alt. E 3) C.M. N/V	1) E 2) Alt. E 3) C.M. N/V	1) E 2) Alt. E 3) C.M. N/V	1) E 2) Alt. E 3) C.M. N/V	1) E 2) Alt. E 3) C.M. N/V	1) E 2) Alt. Vacant 3) C.A. N/V	1) E 2) Alt. E 3) C.A. N/V	1) E 2) Alt. E 3) C.M. N/V	1) E 2) Alt. E 3) C.A. N/V	1) E 2) Alt. E 3) C.M. N/V

Non-Voting Members

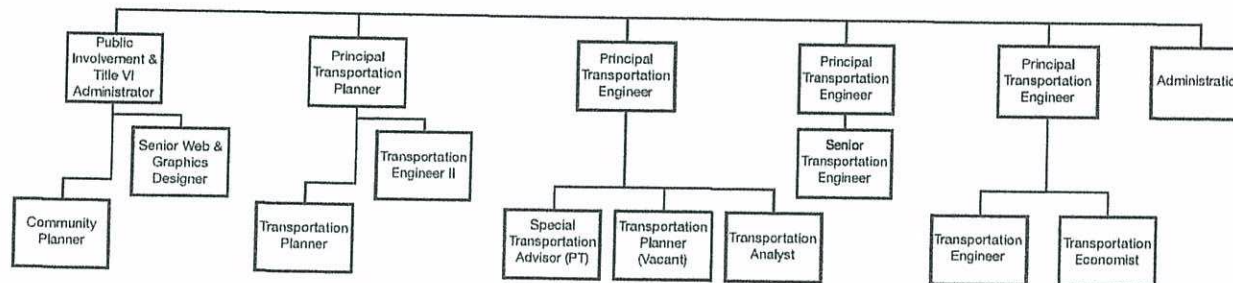
- Citizens Transportation Advisory Committee
- Freight Transportation Advisory Committee
- Commonwealth Transportation Board
- Norfolk Airport Authority
- Peninsula Airport Commission
- Virginia Department of Aviation
- Federal Aviation Administration
- Federal Transit Administration
- Federal Highway Administration
- Military Liasons from the Navy, Coast Guard, Langley-Eustis

Voting Members-Policy Makers:

- Public Transit Agencies
 - HR Transportation District Commission
 - Williamsburg Area Transit Authority
- State Agencies
 - Virginia Department of Transportation
 - Virginia Department of Rail and Public Transportation
 - Virginia Port Authority
- Virginia General Assembly
 - 2 Senators
 - 2 Delegates



Staff Assigned to Committee



CM = City Manager
CA = County Administration