

I-64 Peninsula Widening- Segment I

Project Scope:

From 0.52 miles east of Yorktown Road/Rte 238 (Exit 247) to 1.55 miles west of Jefferson Ave/Rte 143 (Exit 255) (6.1 miles)

- Additional 12' wide travel lanes and 12' wide shoulder lanes within the existing median space
- Replacement of the Industrial Park Drive bridges, and repair and widening of 4 bridges and 2 major culverts
- Strengthened shoulder lane from Ft Eustis Blvd Interchange to Jefferson Avenue Interchange

Project Financial Summary:

<u>Project Budget (\$122,551,685):</u>	<u>Funds Expended (as of 6/25/18):</u>	<u>Projected Cost Over/(Under):</u>
○ PE \$ 4,135,000	\$ 2,738,567	\$ 0
○ RW \$ 5,901,490	\$ 32,494	\$ 0
○ CN \$ 112,515,195	<u>\$ 108,584,469</u>	<u>\$ 0</u>
	\$ 111,355,530	\$ 0

Project Schedule:

Notice To Proceed (NTP)	March 2015
Project Completion	December 2017
Schedule Status	Completed

Project Status:

- Completion achieved on 01 December 2017



Project Site (Looking West from Denbigh Blvd.)

I-64 Peninsula Widening- Segment II

Project Scope:

From 1.05 miles west of Hummelsine Parkway/Marquis Center Pkwy/Rte 199 (Exit 242) to where the Segment I project ends at 0.54 miles east of Yorktown Road/Rte 238 (Exit 247) (7.1 miles)

- Additional 12' wide travel lanes and 12' wide shoulder lanes within the existing median space
- Repair and widening of 9 bridges and 6 major culverts
- Reconstruction of existing roadway

Project Financial Summary:

<u>Project Budget (\$175,832,897):</u>	<u>Funds Expended (as of 6/30/18):</u>	<u>Projected Cost Over/(Under):</u>
○ PE \$ 6,000,000	\$ 2,429,982	\$ 0
○ RW \$ 1,511,548	\$ 508,615	\$ 0
○ CN \$ 168,321,349	<u>\$ 111,417,948</u>	<u>\$ 0</u>
	\$ 114,356,545	\$ 0

Project Schedule:

NTP	February 2016
Project Completion	May 2019
Schedule Status	On Schedule

Project Status:

- Completed I-64 EB traffic shift to Phase 2 in Section CB (Exit 243 to Exit 247)
- Bridge deck placements completed for all bridges
- Continued Phase I pavement section construction for I-64 EB and WB (east of Exit 243)
- Started Phase II pavement reconstruction in Sections A and B (west of Exit 243)



I-64 Westbound Pavement Construction at the Burma Road Bridge Approach

I-64 Peninsula Widening- Segment III

Project Scope:

From approximately 1.15 miles West of Rte 199/Lightfoot (Exit 234) to where the Segment II project ends at 1.05 miles west of Hummelsine Parkway/Marquis Center Pkwy /Rte 199 (Exit 242) (8.2 miles)

- o Additional 12' wide travel lanes and 12' wide shoulder lanes within the existing median space
- o Replacement of the two Queen's Creek bridges, repair and widening of 4 bridges, 3 major culverts
- o Reconstruction of existing mainline roadway

Project Financial Summary:

<u>Project Budget (\$244,045,973):</u>	<u>Funds Expended (as of 7/02/18):</u>	<u>Projected Cost Over/(Under):</u>
o PE \$ 10,000,000	\$ 4,523,153	\$ 0
o RW \$ 12,000,000	\$ 27,787	\$ 0
o CN \$ 222,045,973	<u>\$ 7,218,293</u>	\$ 0
	\$11,769,233	

Project Schedule:

Notice To Proceed (NTP)	January 2018
Project Completion	September 2021 (or June 2021 for early completion incentive)
Schedule Status	On-Schedule

Project Status:

- o Field Surveys and utility designations are complete. Borings completed in mid-June.
- o Met with Contractor on June 18 to discuss VDOT Scope Validation response
- o Contractor to begin Interstate Maintenance in July 2018
- o A Citizen Information Meeting was held June 27, 2018 at Bruton High School with 236 citizens in attendance



I-64 westbound looking eastbound across the Queens Creek Bridge

I-64/I-264- Phase I

Project Scope:

From the I-64 Twin Bridges to the I-264/Newtown Road Interchange

- Widening westbound I-64 by adding a second exit lane from Twin Bridges to the I-64/I-264 interchange
- Introducing a new two lane Collector-Distributor (C-D) roadway from I-64 to the Newtown Road interchange
- Constructing a new two-lane flyover ramp from westbound I-64 tying into the existing eastbound I-264 C-D road

Project Financial Summary:

<u>Project Budget (\$158,730,023):</u>	<u>Funds Expended (as of 6/30/18):</u>	<u>Projected Cost Over/(Under):</u>
○ PE \$ 10,135,307	\$ 10,135,307	\$ 0
○ RW \$ 11,571,063	\$ 19,298,196	\$ 7,727,133
○ CN \$ 137,023,653	\$ 66,421,348	\$ 0
	\$ 95,854,851	

Project Schedule:

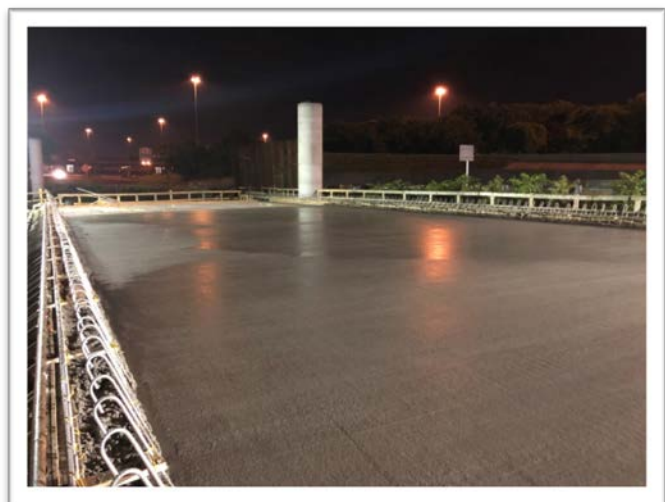
Notice To Proceed (NTP)	October 2016
Project Completion	October 2019
Schedule Status	On-Schedule

Project Status:

- Completed columns and cap beams on all bridges
- Erected Span e B-602 Over HRT tracks and under Dominion Power high tension lines
- Began placing concrete bridge deck spans



Erecting B-602 Span e Girders



Finished Placement of Deck Span

I-64/I-264- Phase II

Project Scope:

From the I-264/Newtown Road Interchange to the I-264/Witchduck Road Interchange

- Extends the new C-D roadway from the Newtown Road interchange to the Witchduck Road interchange
- Reconfigure the Newtown Road and Witchduck Road interchange ramps south of I-264
- Constructing a new overpass that connects Greenwich Road south side of I-264 and Cleveland north of I-264

Project Financial Summary:

<u>Project Budget (\$194,503,887):</u>	<u>Funds Expended (as of 6/30/18):</u>	<u>Projected Cost Over/(Under):</u>
○ PE \$ 14,082,810	\$ 14,056,029	\$ 0
○ RW \$ 54,392,666	\$ 35,842,330	\$ 0
○ CN \$ 126,028,411	\$ 6,631,117	\$ 0
	\$ 56,529,476	

Project Schedule:

Award	December 2017
Notice to Proceed	February 2018
Projected Completion	September 2021
Schedule Status	On-Schedule

Project Status:

- Continued building demolitions
- Continued widening I-264 Exit 15A to Newtown Road
- Continued Cleveland Street and Greenwich Road ground improvements



I-264 Exit 15A at Newtown Road



Future site of Greenwich Road Roundabout

I-64 Southside Widening and High Rise Bridge- Phase I

Project Scope:

From approximately the I-64/264/664 Interchange at Bowers Hill and extending to the I-64/464 Interchange in Chesapeake

- Widening from 4 to 6 lanes
- Constructing a new High Rise Bridge parallel to and to the South of the existing High Rise Bridge
- Addition of Shoulder Lanes between the Route 17 and I-464 interchanges

Project Financial Summary:

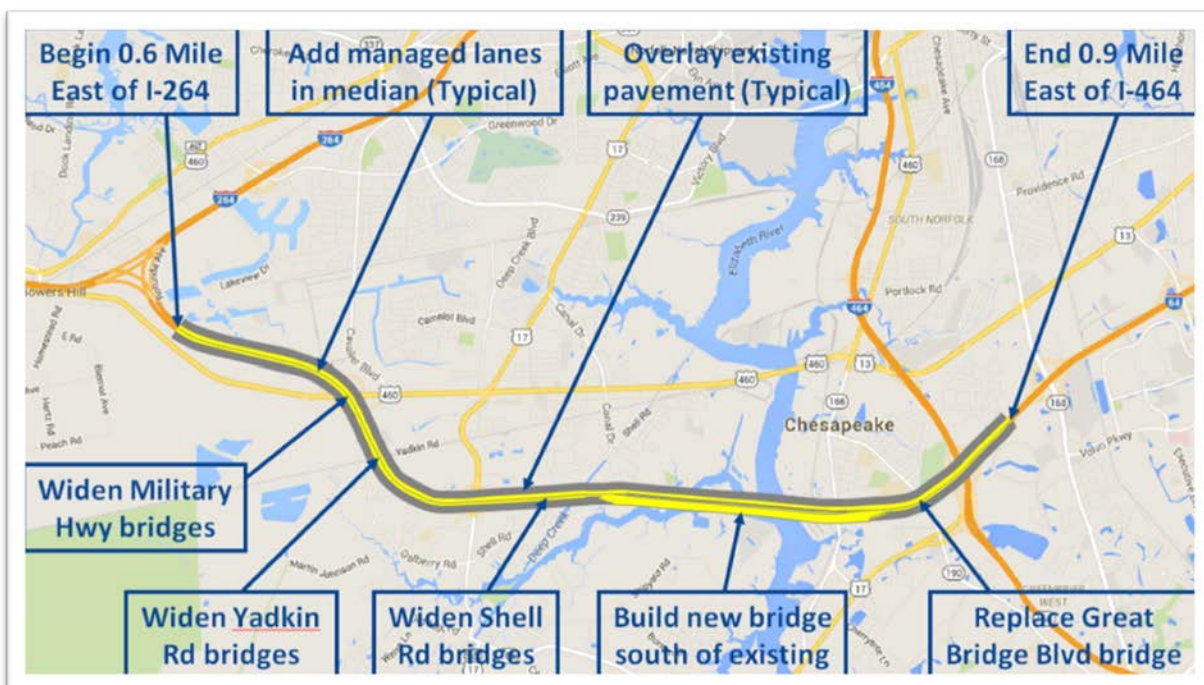
<u>Project Budget (\$524,613,765):</u>	<u>Funds Expended (as of 6/30/18):</u>	<u>Projected Cost Over/(Under):</u>
○ PE \$ 12,200,000	\$ 12,189,098	\$ 0
○ RW \$ 18,726,000	\$ 140,032	\$ 0
○ CN \$ 493,687,765	<u>\$ 44,789,374</u>	\$ 0
	\$ 57,118,504	

Project Schedule:

Award	October 2017
Notice to Proceed	November 2017
Project Completion	July 2021
Schedule Status	On-Schedule

Project Status:

- Conducting coordination meetings with permitting agencies, railroad companies, and other stakeholders for permit and ROW acquisition
- Roadway, bridge and ROW design submittals by the Design-BUILDER are being received and reviewed by VDOT
- GPC planning to begin construction on the High Rise Bridge in July 2018 between the east side of the Elizabeth River and Bainbridge Boulevard





**HRTAC Program Development
Monthly Executive Report
July 2018**

Hampton Roads District
1700 N. Main Street
Suffolk

I-64 Hampton Roads Bridge-Tunnel Expansion

Refinement of Preferred Alternative

Project Scope:

Preliminary work for the I-64 corridor from Settlers Landing Interchange to I-564, including the following activities for refinement of the Preferred Alternative and initial activities to develop the most appropriate procurement approach for expansion of the HRBT:

- o Land survey, including photogrammetry, right-of-way verification, planimetric mapping, digital terrain modeling, and initial utility designation
- o Wetlands survey/delineation to obtain preliminary Jurisdictional Determination
- o Cultural resources/archaeological survey (land and marine)
- o Hazardous materials investigations (land and marine)
- o Geotechnical investigations (land and marine)
- o Environmental permitting and agency coordination, including for in-channel geotechnical sampling
- o Evaluation of disposal options for sediment dredge material and excavated boring material
- o Procurement preparation, including industry outreach (Request for Information process, industry forum, meetings with potential proposers) and assessment of procurement- and delivery-method alternatives

Project Financial Summary:

<u>Project Budget (\$25,000,000):</u>	<u>Funds Expended (as of 6/30/18):</u>	<u>Projected Cost Over/(Under):</u>
o PE \$25,000,000	\$ 15,892,562	\$ 0
o RW \$ 0	\$ 0	\$ 0
o CN \$ 0	\$ 0	\$ 0
	\$ 15,892,562	

Project Schedule:

Request for Qualifications (RFQ)	December 2017
Request for Proposals (RFP)	May 2018
Project Award	Early 2019
Project Completion	2024
Schedule Status	On-Schedule

Project Status:

- o Project in procurement; contract award anticipated in early 2019

Route 460/58/13 Connector

Study Scope:

Study from approximately the I-664/U.S. Route 58 Interchange and extending to the Business U.S. Route 460 and the Suffolk Northern Bypass (U.S. Route 13/58/460) Interchange:

- Improve existing roadway to interstate standards and address roadway deficiencies
- Improve accessibility to/from the SPSA Regional Landfill
- Improve accessibility to/from the Hampton Roads Executive Airport

Study Financial Summary:

<u>Project Budget (\$5,000,000):</u>	<u>Funds Expended (as of 6/30/18):</u>	<u>Projected Cost Over/(Under):</u>
○ PE \$ 5,000,000	\$ 790,360	\$ 0
○ RW \$ 0	\$ 0	\$ 0
○ CN \$ 0	\$ 0	\$ 0
	\$ 790,360	

Study Schedule:

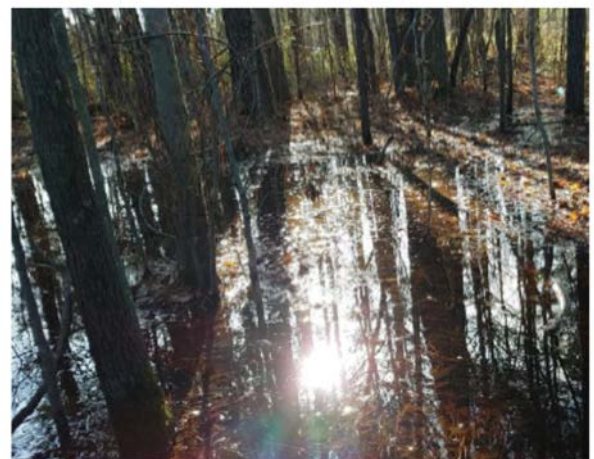
Begin NEPA Process	June 2017
Study Completion	June 2020

Study Status:

- Completing technical studies and compiling Environmental Assessment (EA) documentation for Federal Highway Administration review
- Anticipate EA available for public review and comment late Summer/early Fall 2018



Existing facility looking westbound from weigh station



Wetland south of eastbound lanes near Sondej Avenue

I-64/I-264- Phase III

Project Scope:

Study/design to improve the remaining I-64/I-264 movements

- Includes I-64 Eastbound (EB) movements to I-264
- Includes I-264 movements to I-64

Project Financial Summary:

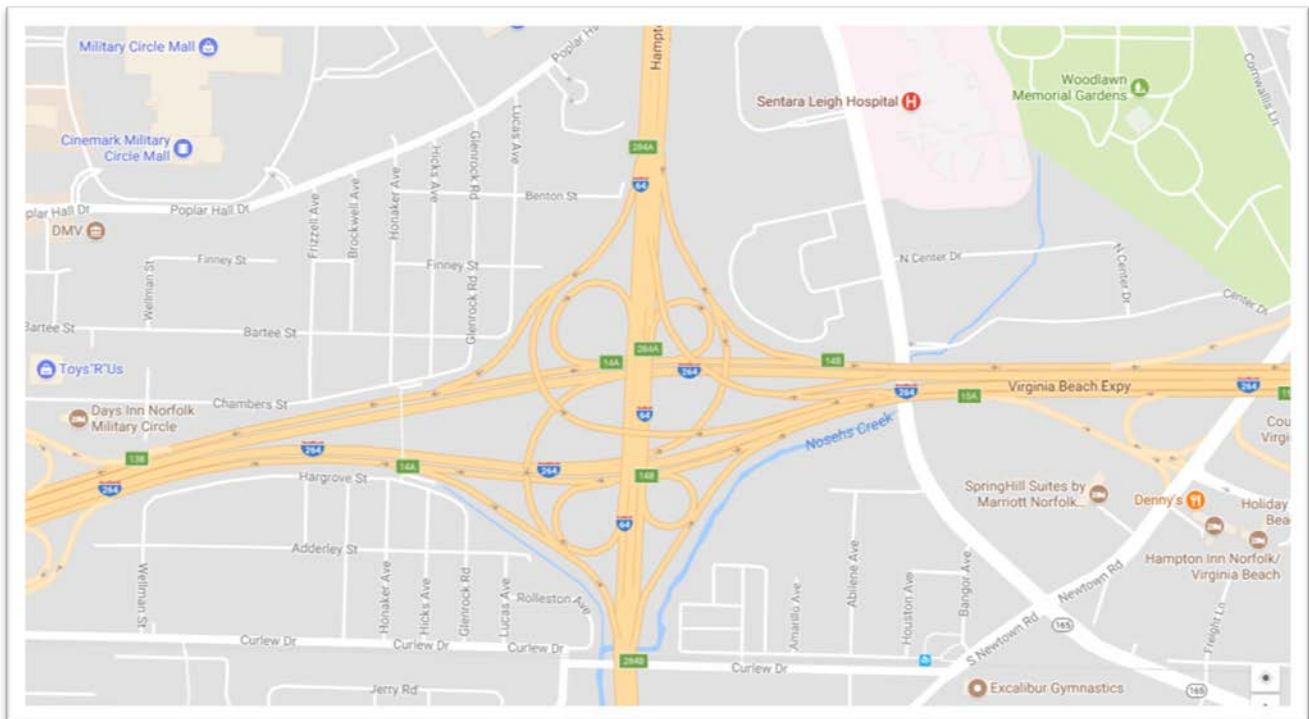
<u>Project Budget (\$10,000,000):</u>	<u>Funds Expended (as of 6/30/18):</u>	<u>Projected Cost Over/(Under):</u>
○ PE \$ 10,000,000	\$ 57,220	\$ 0
○ RW \$ 0	\$ 0	\$ 0
○ CN \$ 0	<u>\$ 0</u>	\$ 0
	\$ 57,220	

Project Schedule:

MOA Executed	May 2018
IMR Conditional Approval	August 2019
NEPA Approval	December 2019

Project Status:

- Completed traffic data collection and field observations
- IMR Framework Document is under review by the FHWA
- IMR development is underway
- Baseline traffic volume is currently under development
- Reviewing the regional traffic demand model



Bowers Hill Interchange

Study Scope:

Develop NEPA document and supporting studies for improvements to the I-64/I-264/I-664 Interchange and the Route 58/Route 460 Interchange (Bowers Hill).

Study Financial Summary:

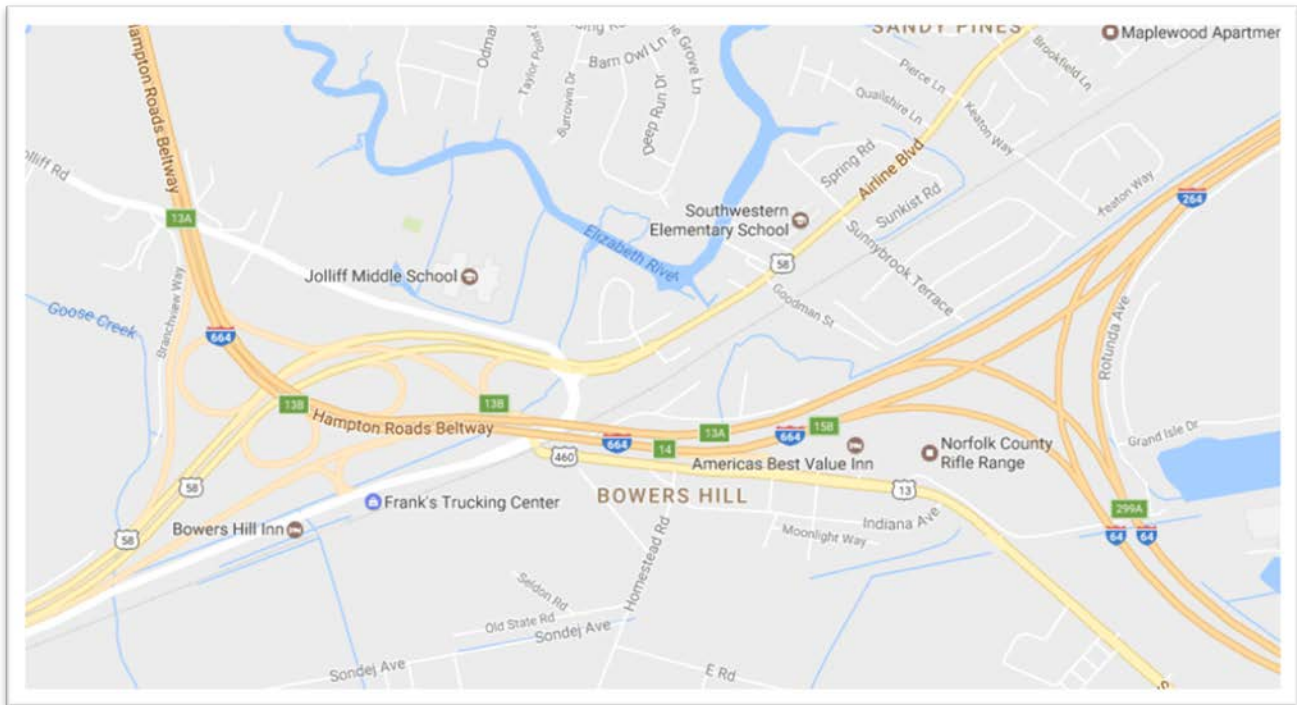
<u>Project Budget (\$4,000,000):</u>	<u>Funds Expended (as of 6/30/18):</u>	<u>Projected Cost Over/(Under):</u>
o PE \$4,000,000	\$ 224,478	\$ 0
o RW \$ 0	\$ 0	\$ 0
o CN \$ 0	\$ 0	\$ 0
	<u>\$ 224,478</u>	

Study Schedule:

Begin NEPA Process	January 2018
Completion	January 2020

Study Status:

- o Agency concurrence on Environmental Analysis Methodologies received June 13, 2018.
- o Virtual Public Meeting comment period closed on June 9, 2018. 366 comments submitted in total; intended to inform the development of the study's Purpose and Need Statement.
- o Purpose and Need Statement is currently under development. Draft Purpose and Need Statement introduced to the Cooperating and Participating Agencies on June 13, 2018 and concurrence is anticipated by the end of July.
- o Preliminary alternatives are being developed based on draft Purpose and Need Statement.



Ft. Eustis Interchange

Project Scope:

Replace the I-64 Ft Eustis Interchange to mitigate congestion and improve safety.

Project Financial Summary: TBD

Project Schedule: TBD

Project Status: TBD

I-64 Southside Widening and High Rise Bridge- Phase II

Project Scope:

From approximately the I-64/464 Interchange in Chesapeake extending to the I-64/264/664 Interchange at Bowers Hill

- Widening from 6 to 8 lanes
- Replacing the existing High Rise Bridge
- Rebuild the four Interchanges

Project Financial Summary: TBD

Project Schedule: TBD

Project Status: TBD