

PREFACE

THE *REGIONAL CONSTRUCTION STANDARDS*

The Cities and Counties that make up the region of Hampton Roads, Virginia have recognized the need to develop uniform construction standards for improvements in public rights of way. The initial direction is to address “horizontal” improvements and those involving the major elements of roadways, drainage and utilities (water distribution and wastewater collection). With a limited budget and a strong sense of urgency, the intent was to develop standards that would accommodate most of the “typical” construction projects in the region. Therefore, these documents are intended to support the majority of issues the communities face in building minor roads and utilities. Additional specifications and standard details, along with improvements to earlier versions, will be an ongoing effort.

The *Regional Construction Standards* are a reference document comprised of Technical Specifications, Standard Details and “Front-End” documents (the legal framework and administrative provisions for construction contracts). The user should normally prepare Construction Drawings and Special Provisions for individual projects. The Special Provisions are tied to the *Regional Construction Standards* by reference (Section 110) and should address any particular administrative, procedural, legal, or technical requirement of the project and/or the locality; supplemental or modified specifications and standard details; along with the appropriate completed bidding documentation. **The vast majority of the Standards (Technical Specifications and Standards Details) should NOT be reproduced when projects are bid for construction. Municipalities typically reproduce only the Front-End Documents, which include the Special Provisions (Section 110).**

These Standards were developed under the auspices of the Hampton Roads Planning District Commission (HRPDC) and represent a collaborated effort of the 16 communities that constitute the HRPDC, the Hampton Roads Sanitation District (HRSD), and the Hampton Roads Utility and Heavy Contractors Association (HRUHCA). Many municipal, HRSD and HRUHCA representatives have spent countless hours serving on committees that guided, edited, refined, and established these *Regional Construction Standards*. Designers, material suppliers, contractors, attorneys, purchasing agents and consulting engineers have provided timely and insightful comments, along with the Virginia Department of Transportation, the Virginia Department of Health - Office of Drinking Water Programs, and the Virginia Department of Environmental Quality.

While diligent effort has been made to provide reliable, accurate, and up-to-date information, neither the communities of Hampton Roads, HRPDC, or its consultants, can place a guarantee on the correctness of the data or information contained in this document. The authors and editors do hereby disclaim any responsibility or liability in connection with the use of these *Regional Construction Standards* or of any data or other information contained therein.

This document may be obtained electronically at www.hrpdcva.gov or by purchasing a CD at the offices of the HRPDC. The front end documents are available in Microsoft Word software, while the technical specifications and standard details are available in Acrobat Reader (.pdf) format. The user must acknowledge all modifications to the *Regional Construction Standards* and illustrate changes in the Front End documents using ~~striketroughs~~ and **bold** for deletions and additions, respectively. The user is entirely responsible and completely liable for misrepresentations to this document.

Hampton Roads Planning District Commission

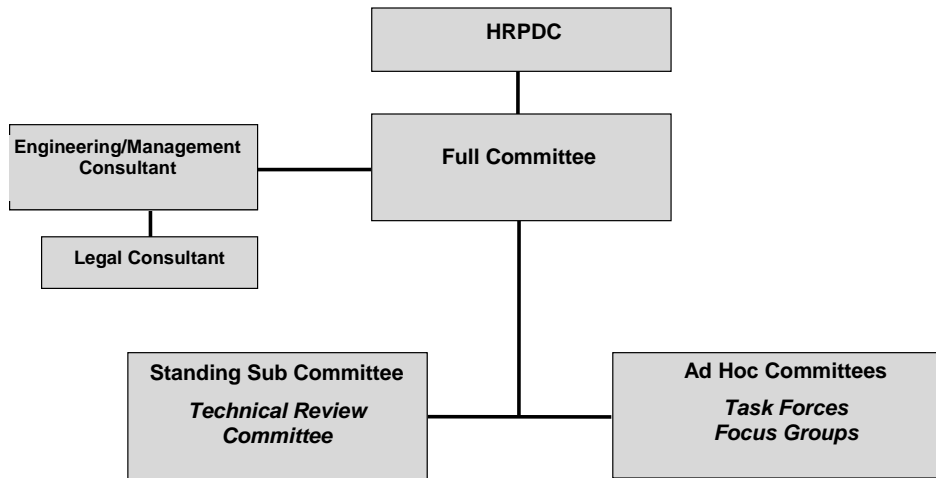
723 Woodlake Drive
Chesapeake, Virginia 23320
(757-420-8300)

2101 Executive Drive
Hampton, Virginia 23666
(757-262-0094)

PREFACE

ADMINISTRATIVE STRUCTURE

The Organizational Structure for the maintenance of HRPDC's *Regional Construction Standards* is illustrated in the accompanying figure and briefly described below.



Program Administration

HRPDC is responsible for the administration of the financial and contractual issues for the continued implementation of the *Regional Construction Standards* program.

Full Committee

The Full Committee (FC) is the governing body for the *Standards*. The Full Committee consists of up to 34 voting members – up to two voting representatives from each of the 16 cities and counties in the Hampton Roads Planning District and one voting member from the Hampton Roads Sanitation District (HRSD) and the Hampton Roads Utility and Heavy Contractors Association (HRUHCA).

Technical Review Committee

The Technical Review Committee (TRC) is a standing subcommittee established by the Full Committee to provide technical reviews of the *Regional Construction Standards*. The TRC updates and edits the document and prepares new technical specification sections and standard details. The TRC collects information from individuals, jurisdictions and agencies with an emphasis on reviewing Special Provisions to determine common elements or improvements that could be incorporated into the future editions or amendments.

Ad-Hoc Committees

At key stages of development of the document or for special assignments, Ad Hoc Committees are formed and are often referred to as Focus Groups or Task Force Committees. In the past, Focus Groups have been convened to provide critical input of the *Standards* prior to the completion of new editions. Focus Groups have included: City and County Attorneys and Purchasing Agents whose task has been to review the front-end portion of the document; and, consulting engineers, contractors, and suppliers who have reviewed the

PREFACE

entire document, with emphasis on the technical specifications and the standard details. Task Force Committees have also been convened to study specific assignments, such as the Manhole Coatings Task Force that addressed specific issues dealing with new, precast, manhole coatings.

Engineering/Management/Legal Consultant

A consultant is used for technical, management, legal advice and also performs training. The consultant serves at the pleasure of HRPDC and provides guidance and support for the committees, as well as HRPDC.

More information regarding the organizational structure and procedures used to maintain and implement the HRPDC *Regional Construction Standards* may be found at http://www.hrpdcva.gov/Regional_Construction_Stnds/REGCONST_Home.asp.

Want to get involved?

If you would like to help provide quality construction practices and simplify the bidding and construction administration process throughout the Hampton Roads region, HRPDC would like you to join one of the above described functions. Please e-mail [DFarmer@ HRPDCVA.gov](mailto:DFarmer@HRPDCVA.gov) or call 757-420-8300.

PREFACE

IMPORTANT NOTICES!

New editions of the *Regional Construction Standards* are anticipated approximately every three to four years. The time interval allows the users to become more familiar with the document, while the need for updating Special Provisions in each locality is greatly reduced to keep up with newer versions. When modifications are required between editions, “Proposed Revisions” are considered by the Technical Review Committee. If approved by the TRC, the Full Committee will then consider these Proposed Revisions for adoption. If approved by the Full Committee, the Proposed Revision becomes a “Publication Update” which is then posted on the HRPDC Web Site. Notification of a recently adopted Update is e-mailed to the jurisdictions, who are responsible for accepting the Update on behalf of their locality and including the Update in their Special Provisions. Other users wishing to be notified via e-mail should contact HRPDC for inclusion on an e-mail tree. Continuing workshops and training sessions are also provided to the Hampton Roads localities and the general public to facilitate the implementation and understanding of the document. More information including meeting dates, status of Proposed Revisions, *Regional Construction Standards* sections downloads, etc. may be found at the HRPDC website mentioned above.

USE OF PROFESSIONAL ENGINEER’S SEAL

In Virginia, a professional engineer may only affix his seal to plans and specifications that he has either directly prepared or were prepared under his direct supervision. The seal indicates that the professional engineer has had complete control and direction over, and accepts responsibility for, the sealed work. (See *18 Va. C10-20-760*). Since the *Regional Construction Standards* were developed by consensus of committees comprised of experienced individuals representing various industry groups rather than under the complete direction and control of a professional engineer, the *Regional Construction Standards* are not sealed, nor would it be appropriate for the *Regional Construction Standards* to be sealed without reference to the application of the *Regional Construction Standards* to a specific project.

When a professional engineer prepares design documents for a specific project and incorporates the *Regional Construction Standards* into that design by reference, the professional engineer’s seal of the particular plans, specifications and drawings for that project represents his approval of the *Regional Construction Standards* as incorporated by reference into such particular plans, specifications and drawings for such project. In other words, the professional engineer who stamps or seals any plans, specifications, reports or other documents incorporating the *Regional Construction Standards* by reference is responsible for assuring that such plans, and the *Regional Construction Standards* as incorporated into such plans by reference, are adequate and appropriate for the particular project. Although it is encouraged that the *Regional Construction Standards* be used as appropriate and applicable to public right of way projects in Hampton Roads, the ultimate decision about what goes into such plans, specifications, reports, or other documents for a specific project must be that of the professional engineer who signs and seals them.