

August 16, 2018

**Memorandum #2018-98**

**TO: Regional Connectors Study Working Group**

**BY: Robert A. Crum, Jr., Executive Director**

**RE: Regional Connectors Study**

Attached is the agenda for the **Regional Connectors Study Working Group meeting** scheduled for **Wednesday, August 22, 2018 at 11:00 am** at The Regional Building, Conference Room D, located at 723 Woodlake Drive, Chesapeake 23320.

MK/sc

**Voting Members:**

Earl Sorey (CH)  
VACANT (HA)  
Bryan Stilley (NN)  
Brian Fowler (NO)  
Sherry Earley (SU)  
James Wright (PO)  
Phil Pullen (VB)

**Nonvoting Members:**

Patrick Kinsman (Army Corps)  
George Janek (Army Corps)  
Robert Pruhs (Army Corps)  
Ivan Rucker (FHWA)  
Kevin Page (HRTAC)  
Rhonda Murray (US NAVY)  
Tim Dolan (US Coast Guard)  
Gene Leonard (US Coast Guard)  
Tony Gibson (VDOT)  
Scott Smizik (VDOT)  
Kit Chope (VPA)

**Staff:**

Bob Crum (HRTPO)  
Mike Kimbrel (HRTPO)  
Rob Case (HRTPO)  
Keith Nichols (HRTPO)  
Dale Stith (HRTPO)

**Project Coordinator:**

Camelia Ravanbakht

**Agenda**  
**Regional Connectors Study**  
**Working Group Meeting**  
**August 22, 2018**

**11:00 AM**

The Regional Building, Conference Room D, 723 Woodlake Drive, Chesapeake, Virginia

1. Call to Order
2. Welcome and Introductions
3. Public Comment Period (Limit 3 minutes per individual)
4. Minutes
5. Phase 1 Study Progress: Craig Eddy, MBI
6. Progress of Tasks
7. Schedule
8. Next Steps

**ADJOURNMENT**

**AGENDA ITEM #1: CALL TO ORDER**

The meeting will be called to order at approximately 11:00 a.m.

**AGENDA ITEM #2: WELCOME AND INTRODUCTIONS**

An opportunity will be provided for introductions of new members or guests.

**AGENDA ITEM #3: PUBLIC COMMENT PERIOD**

Members of the public are invited to address the Working Group. Each speaker is limited to three minutes.

**AGENDA ITEM #4: MINUTES**

Summary minutes of the Working Group meeting held on June 4, 2018 are attached.

Attachment 4

**RECOMMENDED ACTION:**

Approve the minutes.

## **Minutes- RCS Working Group- June 4, 2018**

### Attendance (alphabetically)

Keith Cannady	HRPDC
Rob Case	HRTPO
Kit Chope	VPA
Bob Crum	HRTPO
Sherry Earley	Suffolk
Craig Eddy	Michael Baker
Brian Fowler	Norfolk
Robert Gey	Va. Beach
Carl Jackson	Portsmouth
George Janek	Army Corps of Engineers
Mike Kimbrel	HRTPO
Gene Leonard	USCG
Kendall Miller	HRTPO
Rhonda Murray	Navy
Keith Nichols	HRTPO
Kevin Page	HRTAC
Camelia Ravanbakht	Retired HRTPO
Earl Sorey	Chesapeake
Bryan Stilley	Newport News
Dale Stith	HRTPO
Colleen Symansky	USCG
James Wright	Portsmouth
John Yorks	Hampton

### Meeting

#### 1. Call to Order

11am call-to-order by Bob Crum (HRTPO)

#### 2. Welcome and Introductions

All attendees introduced themselves.

#### 3. Public Comment Period

No public comment.

#### 4. Approval of Minutes

Minutes accepted unanimously by vote.



#### 5. Revised Phase 1 Scope: Craig Eddy, MBI

Craig Eddy (Michael Baker) presented the current Phase 1 scope, revised based on earlier comments of the working group.

Bob Crum (HRTPO) asked that the purpose of Phase 1—"the establishment of goals and objectives [and] the development of a draft scope for Phase 2"—be included in the scope of Phase 1. Craig said that he would add those items to Task 5.

Bob asked if the group was comfortable with him signing a contract for Craig to proceed. The group concurred.

#### 6. Discussion with Proposed Project Manager

Bob called for a closed session (without HRTPO, HRTAC, Navy, and Port staffs), after which the group expressed comfort with using Camelia Ravanbakht (contractor) as project manager.

#### 7. Next Steps

Bob plans to sign contract with Michael Baker this week.

Adjournment

12:35pm

**AGENDA ITEM #5: PHASE 1 STUDY PROGRESS**  
***Craig Eddy, MBI***

**Mr. Craig Eddy, MBI, will brief the Working Group on this item.**

**RECOMMENDED ACTION:**

For discussion and informational purposes.

**AGENDA ITEM #6:    PROGRESS OF TASKS**  
***Craig Eddy, MBI***

**Mr. Craig Eddy, MBI, will brief the Working Group on this item.**

**RECOMMENDED ACTION:**

For discussion and informational purposes.

**AGENDA ITEM #7: SCHEDULE**  
***Craig Eddy, MBI***

**Mr. Craig Eddy, MBI, will brief the Working Group on this item.**

**RECOMMENDED ACTION:**

For discussion and informational purposes.

**AGENDA ITEM #8: NEXT STEPS**

**ADJOURNMENT**

# Handout 1

---

Hampton Roads Regional Connectors Study Working Group  
August 22, 2018

---



## **Detailed Introduction**

The Hampton Roads Transportation Planning Organization (HRTPO) is embarking on the Regional Connectors Study to establish a long-term vision that investigates transportation options that connect the Peninsula and the Southside while improving economic vitality, resiliency, accessibility and quality of life in the region. The 2-3-year study, which was initiated in June 2018, is being funded by the Hampton Road Transportation Accountability Commission (HRTAC) and administered by the HRTPO. The HRTPO procured a consultant, Michael Baker International, Inc., to conduct the study. The study will involve coordination with a Working Group, a Steering Committee, and HRTPO staff, who are undertaking a concurrent 2045 Long-Range Transportation Plan update effort.

The Working Group is comprised of technical staff from 7 local jurisdictions and other key regional stakeholders (US Navy, US Coast Guard, Virginia Port Authority, Federal Highway Administration, US Army Corps of Engineers, Virginia Department of Transportation, and HRTAC). The Steering (or Policy) Committee is comprised of elected officials from 7 local jurisdictions and other key regional stakeholders.

The purpose of the Regional Connectors Study is to evaluate the feasibility, permitability, and transportation benefits of the alternatives presented in the Hampton Roads Crossing Study (HRCS) Supplemental Environmental Impact Statement (SEIS) that were not included in the Preferred Alternative approved by the HRTPO and the Commonwealth Transportation Board, which was to widen I-64 to a consistent six-lane facility between I-664 in Hampton and I-564 in Norfolk and add a bridge-tunnel parallel to the existing Hampton Roads Bridge-Tunnel. (The current project description is to expand the Hampton Roads Bridge-Tunnel to allow for 8 lanes of capacity across the Hampton Roads Harbor and to widen the I-64 corridor to provide 6 lanes of capacity from the Settlers Landing Road interchange in Hampton to the I-564 interchange in Norfolk.)

The HRCS SEIS Alternatives to be evaluated include, but are not limited to:

- VA 164
- I-564 Connector
- VA 164 Connector
- I-664 Connector
- I-664 (from I-64 in Hampton to US 460/58/13 in Chesapeake)

Projects emerging from the study will be considered for potential inclusion in the HRTPO 2045 Long-Range Transportation Plan.

The study is being conducted in Phases. Phase 1 is focused on establishing goals and objectives for the subsequent study phases and includes extensive one-on-one stakeholder interviews; a regional, (statistically valid) public survey; traffic data collection; and future land use and traffic projection methodology discussions and evaluations. Phase 1 will help align the scope of the balance of the study with the expectations/priorities of the region.







This map illustrates the Hampton Roads region in Virginia, highlighting the James River, York River, and Chesapeake Bay. Major highways are shown, including Interstates 64, 664, 17, 13, 60, 10, 258, 460, 58, 168, and 264. Key locations marked include King William, King And Queen, Middlesex, Gloucester, Mathews, New Kent, Charles City, James City, Williamsburg, York, Newport News, Poquoson, Hampton, Norfolk, Portsmouth, Virginia Beach, Chesapeake, Suffolk, Franklin, Southampton, Isle Of Wight, Sussex, and Surry. The Monitor Merrimac Memorial Bridge Tunnel is highlighted in blue, and the Hampton Roads Bridge Tunnel is highlighted in red. The Great Dismal Swamp is shown in green.



- I-664 Connector
- VA 164 Connector
- I-564 Connector

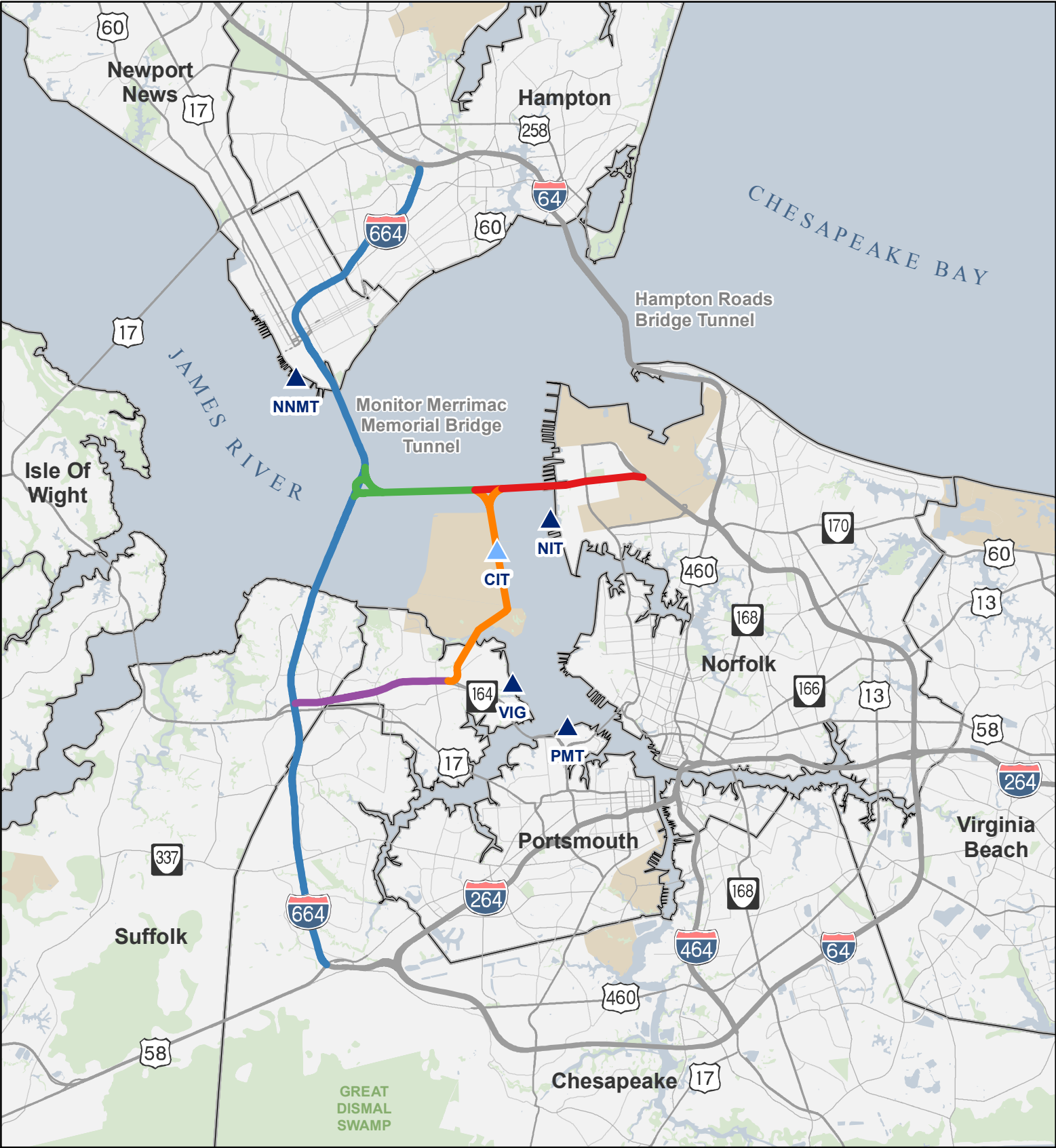


I-664  
VA 164

-  VA Port Authority Terminals
-  Future Craney Island Terminal
-  Parks and Green Space
-  DOD Land
-  HRTPO Jurisdictions
-  Non-HRTPO Jurisdictions



# Hampton Roads Regional Connectors Study



Miles

0 1 2

**Potential Connector Facilities**

	I-664 Connector		I-664
	VA 164 Connector		VA 164
	I-564 Connector		

**Map Features**

	VA Port Authority Terminals
	Future Craney Island Terminal
	Parks and Green Space
	DOD Land



# Segment 1: I-64 at W Mercury Blvd



Placeholder for text describing map location

**Crash Rate**

- Low
- Moderate
- Medium
- High

**Congestion Factor**

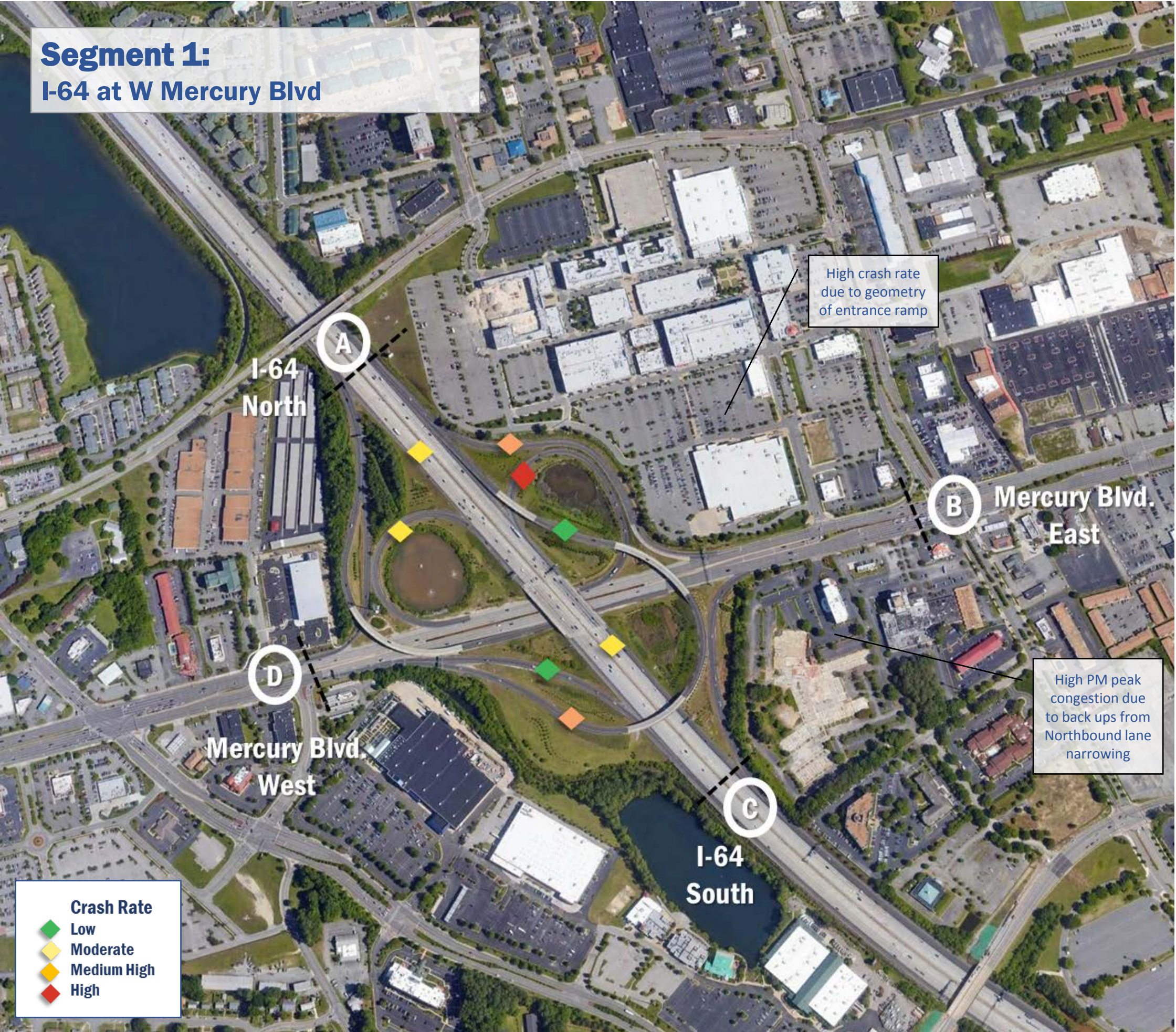
- Low
- Moderate
- Medium
- High

Traffic Volumes				
Origin	Destination	AM Peak	PM Peak	Daily
A (I-64 North)	C	167	230	889
	D	168	200	890
	B	169	201	891
C (I-64 South)	A	170	202	940
	D	171	203	893
	B	190	204	894
D (Mercury Blvd. West)	A	173	205	895
	B	175	205	980
	C	174	206	896
B (Mercury Blvd. East)	A	176	208	898
	D	176	208	898
	C	177	209	899

Average Travel Time (sec)				
Origin	Destination	Free Flow	AM Peak	PM Peak
A (I-64 North)	C	167	230	889
	D	168	200	890
	B	169	201	891
C (I-64 South)	A	170	202	940
	D	171	203	893
	B	190	204	894
D (Mercury Blvd. West)	A	173	205	895
	B	175	205	980
	C	174	206	896
B (Mercury Blvd. East)	A	176	208	898
	D	176	208	898
	C	177	209	899



Segment 1:  
I-64 at W Mercury Blvd



- Crash Rate**
- Low
  - Moderate
  - Medium High
  - High

High crash rate  
due to geometry  
of entrance ramp

High PM peak  
congestion due  
to back ups from  
Northbound lane  
narrowing

Placeholder  
for text  
describing  
map location

- Congestion  
Factor**
- Low
  - Moderate
  - Medium High
  - High



Traffic Volumes				
Origin	Destination	AM Peak	PM Peak	Daily
A (I-64 North)	C	167	230	889
	D	168	200	890
	B	169	201	891
C (I-64 South)	A	170	202	940
	D	171	203	893
	B	190	204	894
D (Mercury Blvd. West)	A	173	205	895
	B	175	205	980
	C	174	206	896
B (Mercury Blvd. East)	A	176	208	898
	D	176	208	898
	C	177	209	899

Average Travel Time (sec)				
Origin	Destination	Free Flow	AM Peak	PM Peak
A (I-64 North)	C	167	230	889
	D	168	200	890
	B	169	201	891
C (I-64 South)	A	170	202	940
	D	171	203	893
	B	190	204	894
D (Mercury Blvd. West)	A	173	205	895
	B	175	205	980
	C	174	206	896
B (Mercury Blvd. East)	A	176	208	898
	D	176	208	898
	C	177	209	899





# HRTPO Regional Connectors Study

---

## STATUS REPORT

August 22, 2018

**Michael Baker**  
INTERNATIONAL

# Phase 1 Tasks

- Task 1 – Develop and Initiate Engagement Program
  - Subtask 1.1A – Conduct One-on-One Interviews with Local Governments
  - Subtask 1.1B – Conduct One-on-One Interviews with other Local Agencies
  - Subtask 1.2 – Prepare Study Engagement /Outreach Plan
  - Subtask 1.3 – Develop and Maintain Study Website
  - Subtask 1.4 – Develop and Conduct Regional Survey
- Task 2 – Evaluate Regional Travel Demand Model
- Task 3 – Determine Scenario Planning Effort
- Task 4 – Update Existing Conditions Information
- Task 5 – Present Findings to Working Group

# Task 1 – Develop and Initiate Engagement Program

- Task 1.1.A and Task 1.1.B - draft questions prepared, stakeholder data base created, project description and study area map developed
- Task 1.2 – Draft Engagement/Outreach Plan well underway
- Task 1.3 – Held coordination meeting August 2 – draft web outline developed
- Task 1.4 - Prepared survey questions for regional statistically-valid survey – Sept 4 mailing

## DELIVERABLES

Engagement/Outreach Plan, establish website with usage statistics, summary of interview and survey results – **initiated, but not close to completion.**

# Task 2 – Evaluate Regional Travel Demand Model

- Reviewed model sets
- Assessed support capability
- Assessed data
- Coordinated with TPO and VDOT regarding planned model updates
- Identified model enhancements required

## DELIVERABLES

Recommendations memorandum – **under development**

# Task 3 – Determine Scenario Planning Effort

- Held workshop with HRTPO staff on July 16
- Collaborating with TPO staff on approach for Phase 2

## DELIVERABLES

Memorandum of understanding defining roles and outcomes – **not initiated yet**

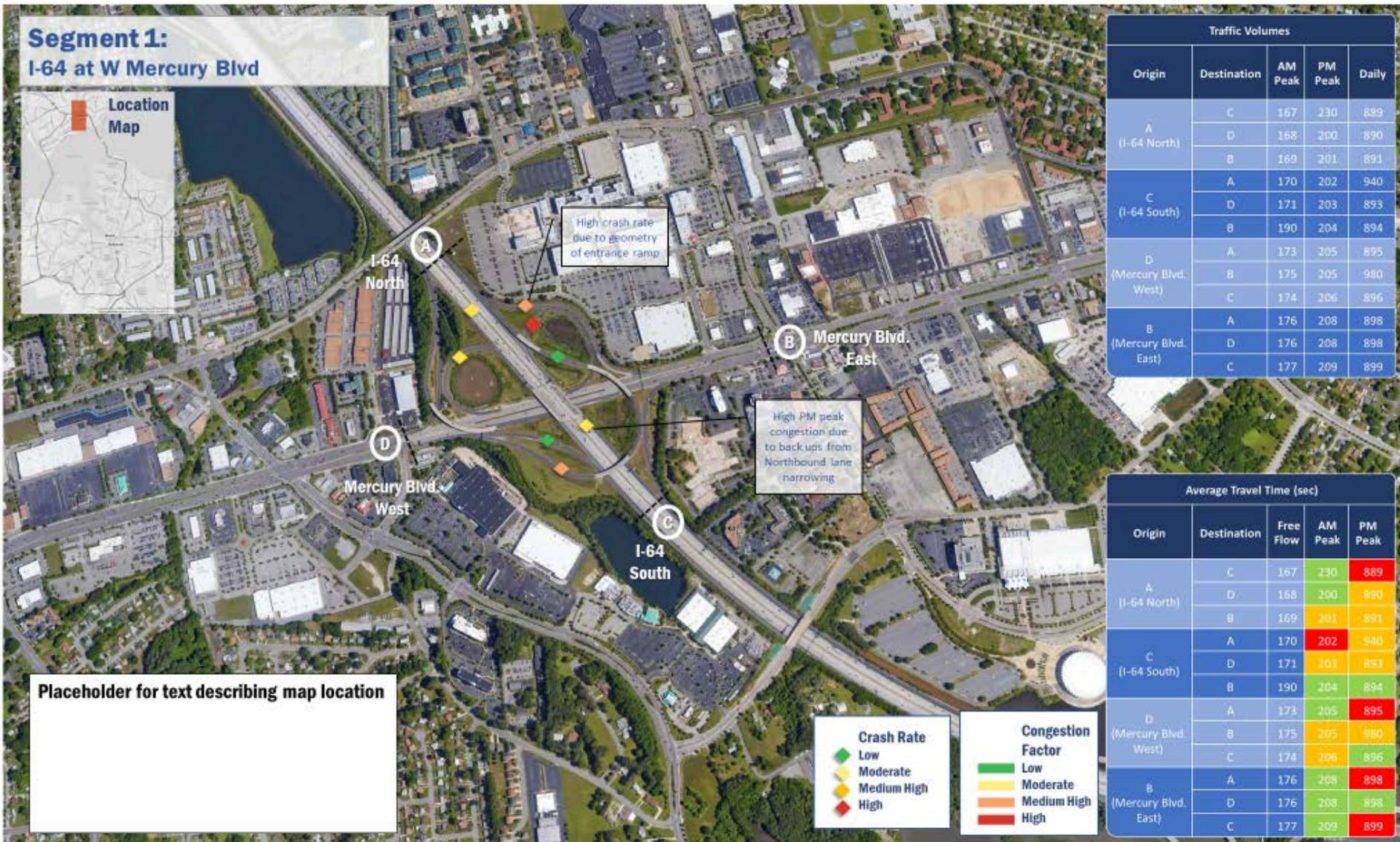


# Task 4 – Update Existing Conditions Information

- Big data has been accessed
- Summary pages under development
- Population of summary pages ready to be initiated

## DELIVERABLES

Technical memorandum with one-page summaries of limited-access roadway segments – **summary pages format under development.**







Placeholder for text describing map location

Traffic Volumes				
Origin	Destination	AM Peak	PM Peak	Daily
A (I-64 North)	C	167	230	889
	D	168	200	890
	B	169	201	891
C (I-64 South)	A	170	202	940
	D	171	203	893
	B	190	204	894
D (Mercury Blvd. West)	A	173	205	895
	B	175	205	980
	C	174	206	896
B (Mercury Blvd. East)	A	176	208	898
	D	176	208	898
	C	177	209	899

**Congestion Factor**  
 Low  
 Moderate  
 Medium High  
 High



Average Travel Time (sec)				
Origin	Destination	Free Flow	AM Peak	PM Peak
A (I-64 North)	C	167	230	889
	D	168	200	890
	B	169	201	891
C (I-64 South)	A	170	202	940
	D	171	203	893
	B	190	204	894
D (Mercury Blvd. West)	A	173	205	895
	B	175	205	980
	C	174	206	896
B (Mercury Blvd. East)	A	176	208	898
	D	176	208	898
	C	177	209	899

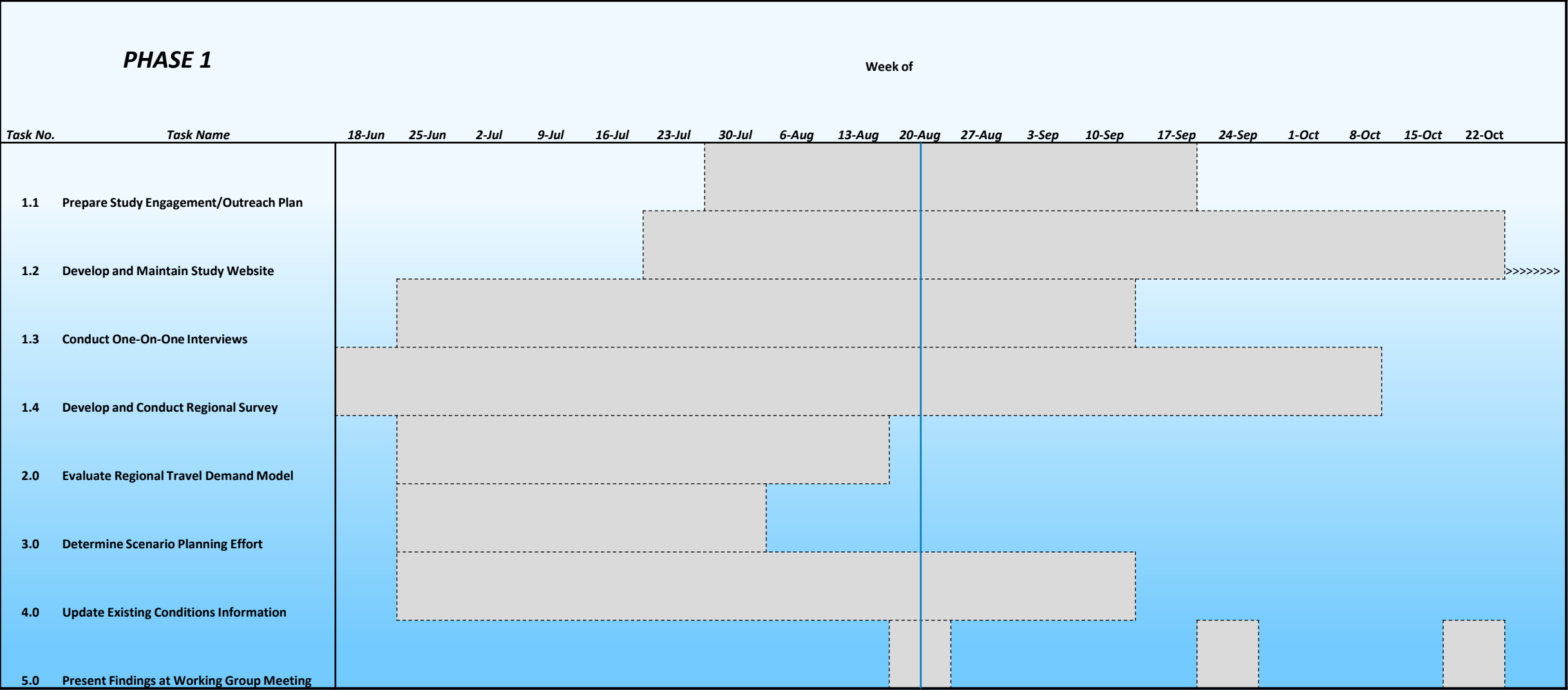
# Task 5 – Present Findings at Working Group Meeting

- June 4 – overview presentation
- August 22 – status update

## DELIVERABLES

Today's Phase 1 status update presentation, Phase 2 draft scope – not initiated yet

# Schedule



# Next Steps

- Complete Phase 1 tasks
- Collaborate with Working Group to determine scope of Phase 2
- Develop costs associated with Phase 2 scope
- Submit Phase 2 scope and costs for HRTPO Board approval