

October 23, 2025

Memorandum #2025-142

TO: HRTPO Long-Range Transportation Plan Subcommittee

BY: Dale M. Stith – Principal Transportation Planner

RE: HRTPO LRTP Subcommittee Meeting – October 27, 2025

Attached is the agenda with related materials for the Long-Range Transportation Plan (LRTP) Subcommittee meeting scheduled for **Monday, October 27, 2025 from 1:30 PM to 3:00 PM**. The meeting agenda includes a feedback item to review the draft 2050 LRTP Project Prioritization scores that will be used as part of the fiscal constraint project selection process. The meeting will also include a brief update on the remaining milestones to be completed before the 2050 LRTP adoption due date of June 2026.

This meeting will be held in a hybrid format. Please indicate how you will attend the meeting with RSVP. For those who plan to attend in person, the meeting will be held in the 757 Room of the Regional Building located at 723 Woodlake Drive, Chesapeake, VA, 23320. For those who plan to attend virtually, please use the Microsoft Teams link or call in (audio only) information below:

Microsoft Teams

[Meeting Link](#)

Meeting ID: 263 445 281 532

Passcode: nq6Sz2cL

Call In (audio only)

+1 972-301-8039

Phone Conference ID: 137 463 550#

DS/se

Attachments



HRTPO LRTP Subcommittee Meeting

Monday, October 27, 2025 @ 1:30 PM

Hybrid Meeting

In Person: The Regional Building, 757 Room
723 Woodlake Drive, Chesapeake, VA 23320

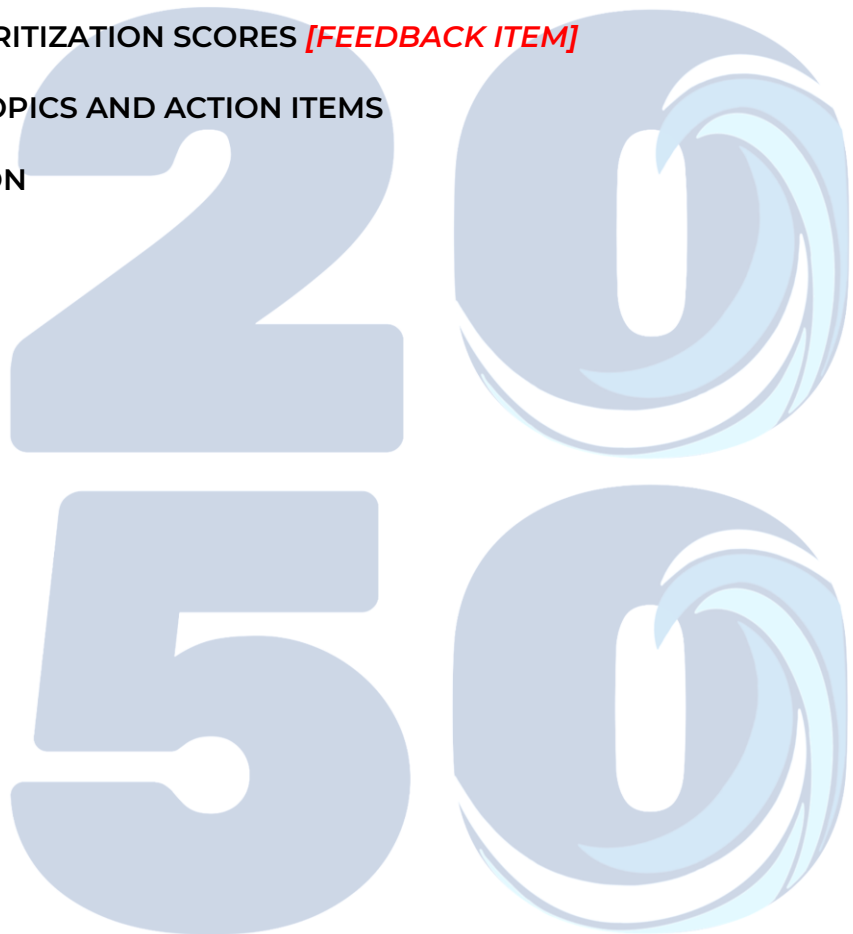
Virtual: Microsoft Teams ([link](#))

Call In (audio only): +1 972-301-8039; ID 137 463 550#

THE OCTOBER 27, 2025 LRTP SUBCOMMITTEE MEETING IS HYBRID.

Agenda

1. CALL TO ORDER
2. APPROVAL OF AGENDA **[ACTION ITEM]**
3. SUMMARY MINUTES OF JUNE 24, 2025 LRTP MEETING **[ACTION ITEM]**
4. REMAINING 2050 LRTP SCHEDULE
5. 2050 LRTP DRAFT PRIORITIZATION SCORES **[FEEDBACK ITEM]**
6. UPCOMING MEETING TOPICS AND ACTION ITEMS
7. FOR YOUR INFORMATION
8. OLD/NEW BUSINESS
9. NEXT MEETING
10. ADJOURNMENT





AGENDA ITEM #1: CALL TO ORDER

The meeting will be called to order by the Chair at approximately 1:30 PM.

AGENDA ITEM #2: APPROVAL OF AGENDA [ACTION ITEM]

Members are provided an opportunity to add or delete items from the agenda. Any item for which a member desires an action from the LRTP Subcommittee should be submitted at this time, as opposed to under "Old/New Business."

AGENDA ITEM#3: SUMMARY MINUTES OF JUNE 24, 2025 [ACTION ITEM]

Summary minutes of the previous LRTP Subcommittee meeting are attached.

Attachment 3: June 24, 2025 Summary Minutes

AGENDA ITEM#4: REMAINING 2050 LRTP SCHEDULE

HRTPO staff will provide an updated schedule for the 2050 LRTP, highlighting the remaining major milestones to be completed before June 2026.

Dale Stith, Principal Transportation Planner, will brief the LRTP Subcommittee on this item.

Attachment 4: Remaining 2050 LRTP Timeline

RECOMMENDED ACTION:

For discussion and information purposes.

AGENDA ITEM #5: 2050 LRTP DRAFT PRIORITIZATION SCORES [FEEDBACK ITEM]

HRTPO staff has completed the evaluation of the 2050 LRTP Candidate Projects using the [HRTPO Project Prioritization Tool](#), which now includes the resiliency enhancements approved by the HRTPO Board at its July 17, 2025 meeting.

The draft prioritization scores represent the culmination of a yearlong collaborative effort to collect data, analyze candidate projects, and refine inputs through coordination with regional stakeholders. Throughout this process, stakeholders have had several opportunities to review and provide feedback on data inputs and assumptions, some of which were provided directly by stakeholders and others developed through staff analysis.

At this meeting, staff will present the draft prioritization results and demonstrate the accompanying **review portal** and **supporting materials** to assist with the review process. The presentation will also include a summary of the top-scoring candidate projects across project types.

HAMPTON ROADS 2050 LRTP

Stakeholders are encouraged to review the draft scores and the associated data inputs, methodologies, and assumptions (supporting materials provided after meeting). If any critical issues are identified, or if more recent data or assumptions are available, please communicate this information to HRTPO staff by **Tuesday, November 25, 2025**.

The draft prioritization scores will also be presented to **TTAC** at its November meeting and shared with other HRTPO advisory committees and subcommittees, including **CAC**, **FTAC**, and **ATS**, and the public for their review and feedback.

Dale Stith, Principal Transportation Planner, will brief the LRTP Subcommittee on this item.

Interactive Draft Prioritization Scores Review Portal:

<https://experience.arcgis.com/experience/20999743082e43bb83422f9e9f54eaa9>

Attachment 5: Draft 2050 LRTP Prioritization Scores

RECOMMENDED ACTION:

Review the draft prioritization scores and provide feedback to Dale Stith (dstith@hrtpo.org) by **Tuesday, November 25, 2025**.

AGENDA ITEM #6: UPCOMING MEETING TOPICS AND ACTION ITEMS

- Long-Range Transportation Revenue Forecast
- Confirmation of 2050 LRTP Regional Priority Projects
- **2050 LRTP Project Selection (fiscal constraint process)**
- New Regional Travel Demand Model Kick-Off

AGENDA ITEM #7: FOR YOUR INFORMATION

AGENDA ITEM #8: OLD/NEW BUSINESS

AGENDA ITEM #9: NEXT MEETING

- January 2026 – Project Selection/Fiscal Constraint Discussion

AGENDA ITEM #10: ADJOURNMENT

Action Summary
HRTPO Long-Range Transportation Plan (LRTP) Subcommittee Meeting
June 24, 2025
Hybrid Meeting

1. Call to Order

With no Chair or Vice-Chair present to oversee the LRTP Subcommittee meeting, Ms. Dale Stith, HRTPO Principal Transportation Planner, offered to run the meeting. The meeting was called to order by Ms. Stith at 1:04 PM.

Members in Attendance:

Andi Kerley (CH)	Steve Lambert (VB)
Kevin Finn (CH)	Hank Morrison (VB)
Brian Lewis (GL)	Stanley Smith (VB)
Stefanie Strachan (HA)	Tevya Williams Griffin (WB)
Tom Leininger (JC)	Caitlin Aubut (YK)
Angela Rico (NN)	Elizabeth Mertz-Guinn (YK)
Bryan Stilley (NN)	Ray Amoruso (HRT)
Brian Swets (NN)	Sherri Dawson (HRT)
Ashley Blue (NO)	Joe Howell (NAVY)
Keith Darrow (NO)	Mitzi Crystal (VDOT)
Megan Gribble (PO)	Angela Effah-Amponsah (VDOT)
William Landfair (PO)	Barbara Nelson (VPA)
Jason Souders (SU)	Steve Simms (WATA)

Others in Attendance:

Sarah Propst (JC)	Mariah David (VDOT)
Keisha Wilkins (VDOT)	Oge Nwandu-Vincent (VDOT)

HRTPO Staff in Attendance:

Dale Stith	Husain Alegimenlen
Keith Nichols	Sean Asbrand
Kyle Gilmer	Pavithra Parthasarathi

2. Approval of Agenda [Action Item]

The agenda was unanimously approved as written (Motion: Ms. Angela Rico (Newport News), Second: Ms. Caitlin Aubut (York County)).

3. Summary Minutes of May 7, 2025 LRTP Meeting [Action Item]

The LRTP Subcommittee Minutes from May 7, 2025 meeting were unanimously approved as written (Motion: Ms. Angela Rico (Newport News), Second: Mr. Tom Leininger (James City County)).

4. 2050 LRTP Project Prioritization: Proposed Resiliency Enhancements [Action Item]

Ms. Stith briefed the Subcommittee on proposed enhancements to integrate resiliency measures within the HRTPO Project Prioritization Tool, which were presented to the Subcommittee in more detail back in May, at which time members were asked for feedback. Ms. Stith reminded members that these refinements align with the 2050 LRTP goal to strengthen infrastructure resilience against flooding, storm events, and other disruptions, and embed resiliency metrics throughout all scoring components including Project Utility, Project Vitality, and Project Viability to create a more comprehensive evaluation framework. Key metrics presented included potential trip loss and access to critical facilities during hazard events, transportation benefits to vulnerable communities at the TAZ level,

resilience return on investment, and regret-based scoring across future scenarios. Ms. Stith reminded members that some comments were incorporated during the May LRTP Subcommittee meeting, stating that no additional comments were received following the meeting. She also noted that a 14-day public review period was currently underway, and that no public comments were received to date. A discussion followed asking for details about the calculation of regret scoring, the definition and identification of critical facilities, and the shifting of weights within the prioritization tool. Following the discussion, the Subcommittee unanimously approved the proposed resiliency enhancements for incorporation into the HRTPO Project Prioritization Tool as part of the 2050 LRTP. The motion was made by Ms. Angela Rico from Newport News and seconded by Ms. Tevya Griffin from Williamsburg. HRTPO staff announced the proposed resiliency enhancements would be presented to TTAC at its July meeting, followed by consideration for HRTPO Board approval in July.

5. 2050 LRTP Project Prioritization – Status Update [Feedback Item]

Ms. Stith and Mr. Kyle Gilmer, HRTPO Senior Transportation Planner, provided a status update on the overall project prioritization schedule and data collection progress. Members were reminded that all outstanding project data must be submitted by June 30, 2025, to ensure candidate projects are fully scored in the prioritization process. Projects missing data by that deadline will receive an N/A value for incomplete fields. Staff emphasized the importance of timely data submission to maintain the LRTP development schedule and support the upcoming fiscal constraint phase.

6. Upcoming Meeting Topics and Action Items

Ms. Stith reviewed upcoming LRTP activities, including finalizing the regional Long-Range Transportation Revenue Forecast, continued coordination on Regional Priority Project identification, review of draft prioritization scores in future meetings, kick off the new Regional Travel Demand Model, and preparation of the 2050 LRTP documentation.

7. For Your Information

The Subcommittee was reminded of the Project Prioritization 101 Session scheduled for July 9, 2025, from 2:00 PM – 3:30 PM (in-person).

8. Old/New Business

There was no additional business to report.

9. Next Meeting

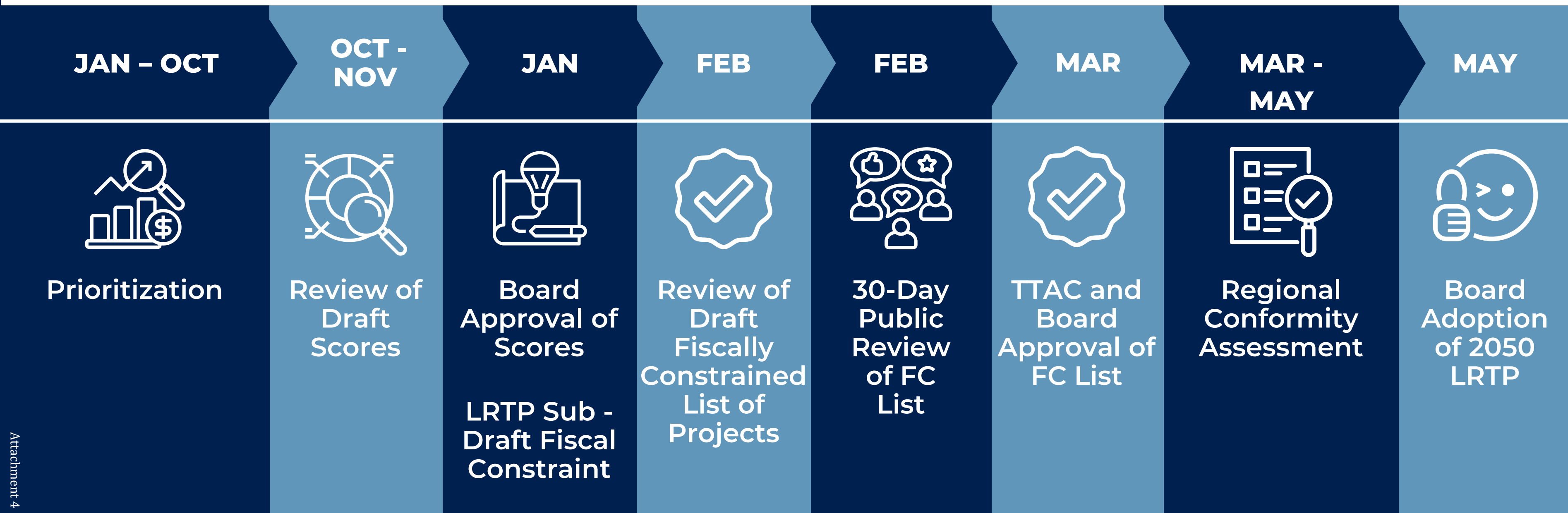
The next LRTP Subcommittee meeting is tentatively scheduled for August 6, 2025, at either 9:30 AM (if TTAC is canceled) or following TTAC at approximately 11:30 AM, depending on the completion of draft prioritization scores.

10. Adjournment

The meeting was adjourned by Ms. Stith at 1:40 PM.

Remaining Tasks

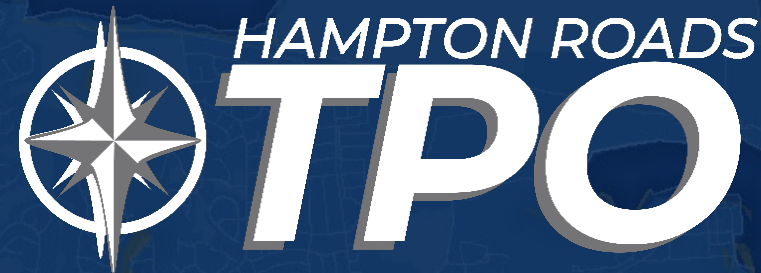
2050 L RTP



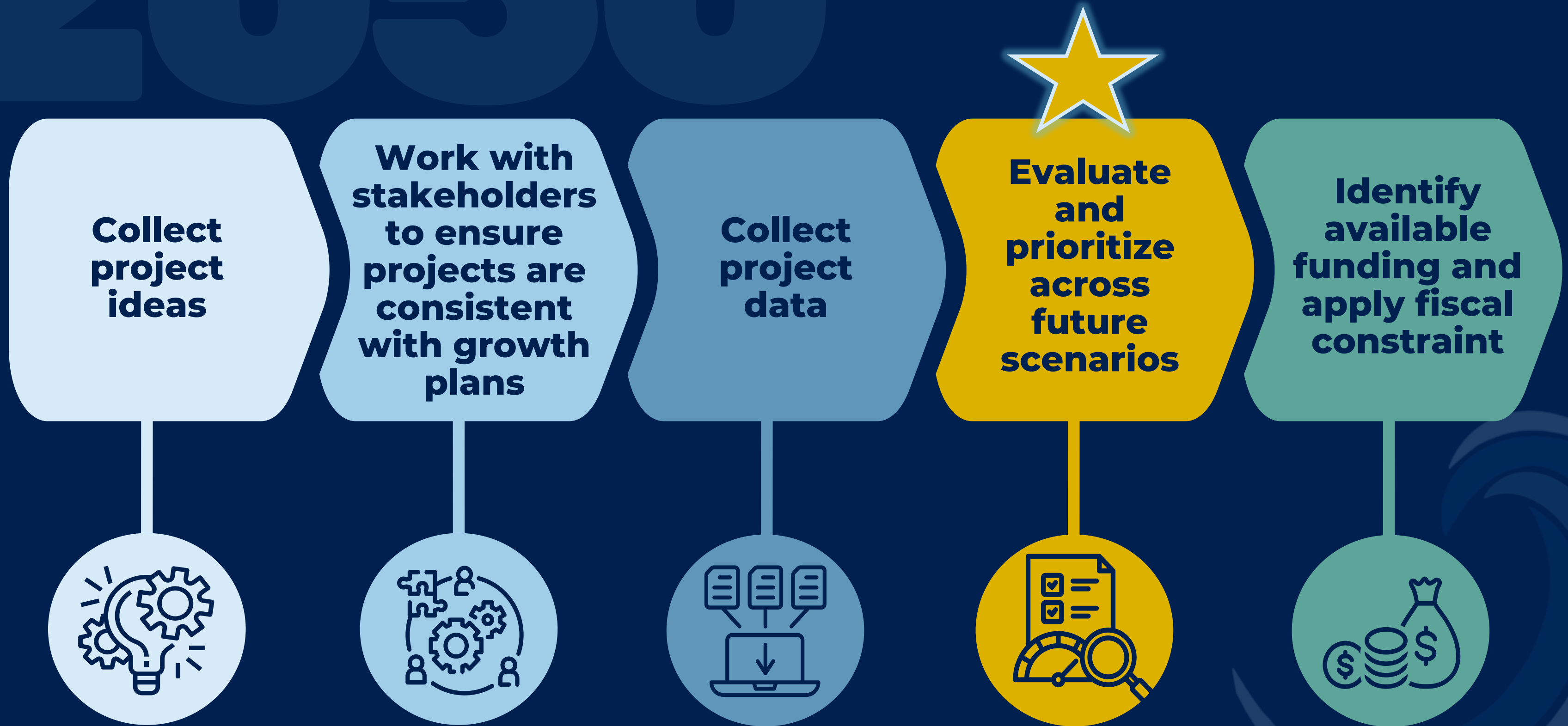


DRAFT Project Prioritization Scores

L RTP Subcommittee Review



LRTP Project Selection Process



Project Evaluation Process



Candidate Project List

**Identify/Confirm
Committed Projects**

**Collect Data from
Stakeholders**

**Review Data
(HRTPO and VDOT)**

**Spatial Analyses
(inputs for Prioritization)**

**Project Evaluation and
Prioritization**

**Review Draft
Prioritization Scores**

**Finalize
Prioritization Scores**



HRTPO Project Prioritization Tool

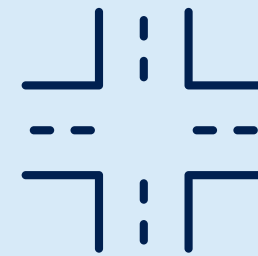
PROJECTS ARE SCORED IN
SEPARATE CATEGORIES



Bridge/Tunnel



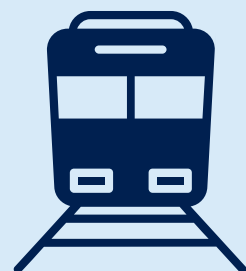
Highway



Interchange/
Intersection



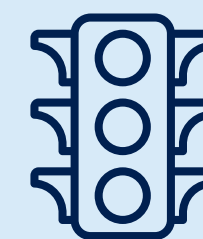
Intermodal/
Freight



Transit



Active
Transportation



Systems/Demand
Management

HRTPO Project Prioritization Tool



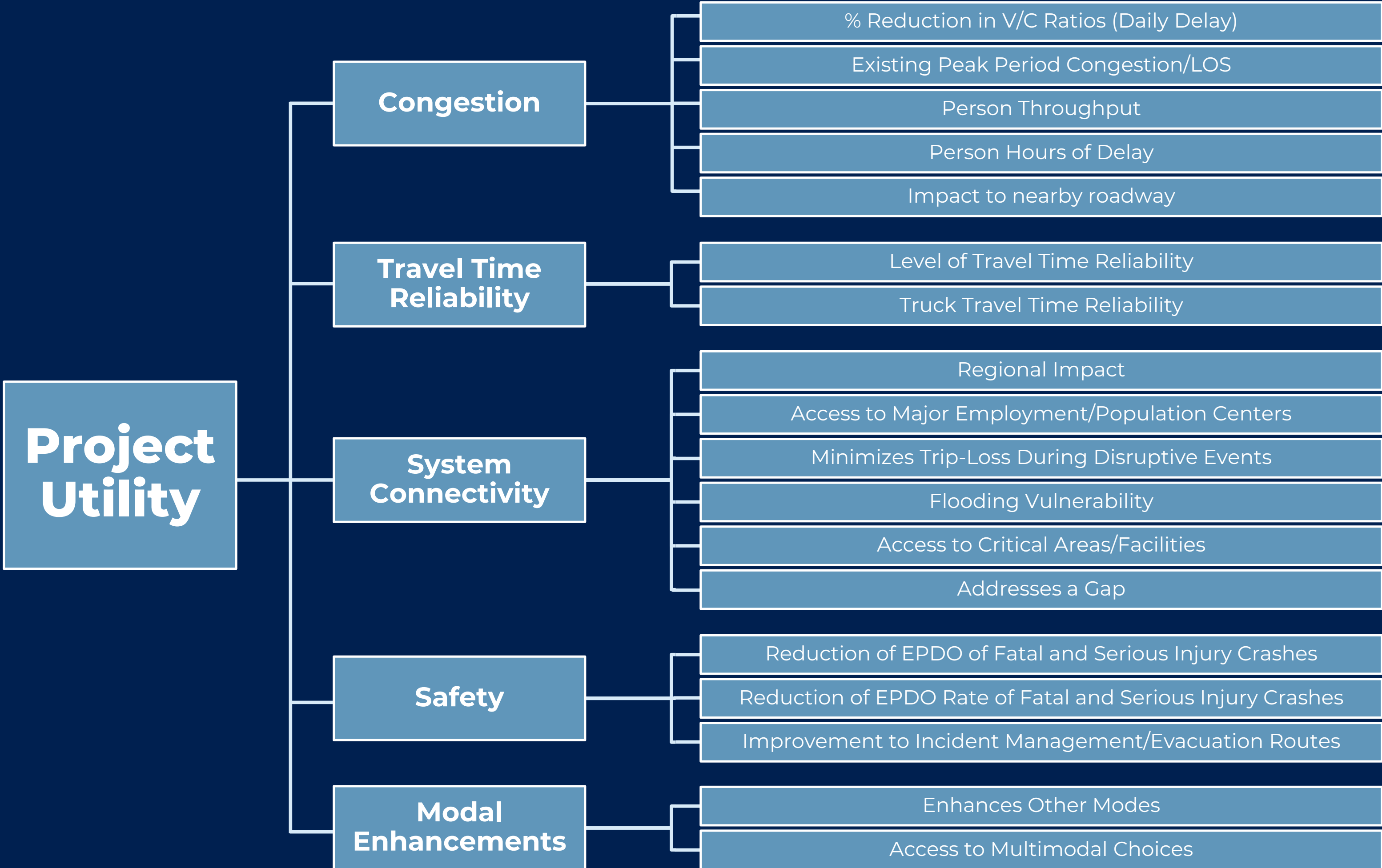
Ability to solve a transportation problem



Potential for economic gain



Project readiness and compatibility



Economic Vitality

Travel Time and Delay Impacts

Total Reduction in Regional Travel Time

Total Reduction in Regional Delay

Labor Market Access

Increased Access for High Density Employment Areas

Basic Sector Needs

Increased Access for Defense Installations

Part of STRAHNET/Roadways Serving the Military

Increased Access for Port Facilities

Improved Access to Truck Zones

Increased Access to Major Tourist Destinations

Increased Opportunity

Provides New or Increased Access

Supports Plans for Future Growth

Provides Access to Higher Education/Workforce Development

Improved Access to UDAs/GOZs/IEDAs

Economic Distress Factors

Provides Access to Low-Income Areas

Provides Access to Areas with High Unemployment

Maintains Access to Transportation-Vulnerable Communities During Disruptive Events

Project Viability

Project Readiness

Percentage of Committed Funding

Prior Commitment

Project Alignment Status

Percentage of Project Design Complete

Environmental Documents Status

Environmental Decisions Obtained

ROW Obtained/Utilities Coordinated

Land Use/Future Development Compatibility

Compatible with Future Land Use (documented)

Environmental Considerations

Environmental MOEs

Acres of Natural and Cultural Resources

Reduces Traffic Delay at Congested Bottleneck with High Percentage of Truck Traffic and/or Includes Freight/Rail/Intermodal Improvements

Percentage of Truck Traffic (for congested freight bottlenecks)

System Importance

Project Regret Score

Infrastructure Criticality

Cost Effectiveness

Benefits to Cost Comparison

Return on Investment Across Scenarios (delay and cost savings)

Prioritization Scores: Organization

Project Utility	Economic Vitality	Project Viability	Total Score
100 Points	100 Points	100 Points	300 Points



2050 ID	PROJECT NAME	FROM	TO	LOCALITY	PROJECT UTILITY	ECONOMIC VITALITY	PROJECT VIABILITY	GRAND TOTAL SCORE
2050-702	South Hampton Roads Trail - Suffolk to Virginia Beach Oceanfront	Downtown Suffolk	Virginia Beach	Multi-jurisdictional	90	90	62	242
2050-740	Virginia Beach Trail	Newtown Rd	Rudee Loop	Virginia Beach	79	100	55	234
2050-703	Trail757 (FKA Birthplace of America Trail/Virginia Capital Trail Extension)	Existing Virginia Capital Trail	Fort Monroe and Downtown Suffolk	Multi-jurisdictional	82	85	55	222
2050-700	Chesapeake Bay Southside Loop	Hampton Blvd	Virginia Beach Trail/Norfolk Ave	Multi-jurisdictional	76	85	39	200
2050-740E	Virginia Beach Trail Phase V	Birdneck Rd	Rudee Loop	Virginia Beach	62	67	70	199
2050-720	Granby Street Multi-Use Path/Bike Lanes	W Ocean View Ave	Existing Path on Lafayette River Bridge	Norfolk	67	90	40	197
2050-738	Thalia Creek Greenway - Phase V	Virginia Beach Trail	Virginia Beach Blvd	Virginia Beach	59	75	61	195

DRAFT 2050 LRTP PROJECT PRIORITIZATION SCORES - ROADWAY

2050 ID	Project Name	From	To	Locality	Project Purpose	Existing Lanes	Proposed Lanes	Project Utility	Economic Vitality	Project Viability	Grand Total Score
Interstate											
2050-205	I-664 Peninsula Widening	Hampton Coliseum	Terminal Ave	Multi-jurisdictional	Widen I-664 from six lanes to eight lanes from Hampton Coliseum to Terminal Ave for additional capacity and congestion relief (extension of Hampton Roads Express Lanes)	6	8	75	87	29	191
2050-206	I-664 Southside Widening	College Dr	Bowers Hill	Multi-jurisdictional	Improve interchange to provide congestion relief and improve safety. EIS preferred alternatative (Alternative C) adds 1 Mainline (ML) + 1 Part-Time Drivable Shoulder (PTDS) to I-664. MLs continue through Bowers Hill interchange.	4/6	6	66	77	42	185
2050-240	VA-168 Bypass Widening	I-64	Hillcrest Pkwy	Chesapeake	Widen to 8-lanes between I-64 & Mount Pleasant Rd (Exit 11), building parallel 4-lane bridge over Intracoastal Waterway, then to 6-lanes between Mount Pleasant Rd & Hillcrest Pkwy (Exit 8)	4	6/8	67	74	36	177
2050-346	I-264 Widening (Virginia Beach)	Witchduck Rd	Independence Blvd	Virginia Beach	Widen interstate with one additional travel lane in each direction and the conversion of the shoulder lane into travel lane	6/8	8/10	55	78	43	176
2050-203	I-264 Widening (Norfolk/Virginia Beach)	Norfolk	Virginia Beach	Multi-jurisdictional	Widen and reconfigure I-264 from 8 lanes to 10 lanes or 12 lanes (combination of General Purpose lanes and HOV/HOT lanes). Provide interchange improvements at every interchange	8	10 or 12	60	83	25	168
2050-201	I-264 Express Lanes (Norfolk/Virginia Beach)	I-64	Oceanfront	Multi-jurisdictional	Extend the Hampton Roads Express Lanes Network along the I-264 Corridor	0	2	62	77	16	155
2050-317	Route 58/Suffolk Bypass Widening	Terminus west of SPSA landfill/HR Executive Airport	US 460 Interchange	Suffolk	Widening from 4 to 6 lanes	4	6	52	74	25	151
2050-204	I-464 Widening	Poindexter St	I-264	Multi-jurisdictional	Widening	2/3	3/4	73	43	28	144
2050-231	I-87	Chesapeake Expressway	North Carolina State Line	Chesapeake	Establish I-87 by upgrading US 17 to interstate standards, enhancing connectivity between Hampton Roads and North Carolina to support economic growth and efficient freight movement.	4	4	47	55	32	134
2050-202	I-264 Widening (Chesapeake/Portsmouth)	I-64/I-664 Interchange	Greenwood Dr	Multi-jurisdictional	Widening	4	6	45	43	23	111
Primary											
2050-256	US 17/Carrollton Blvd Widening	James River Bridge	US 258Rte 669/Smiths Neck Rd	Isle of Wight County	Add lane in southbound direction	4	5	70	65	58	193
2050-212	VA-164 Widening	West Norfolk Bridge	I-664	Multi-jurisdictional	Widening from 4 to 6 lanes	4	6	69	61	37	167
2050-303	Bridge Rd (US 17) Widening - Phase 2	Mills Godwin Bridge	Chesapeake CL	Suffolk	Improvements include 4 to 6 lane widening, turn lanes, and bike/pedestrian accomodations	4	6	60	60	45	165
2050-389	J. Clyde Morris Blvd/George Washington Memorial Hwy (US 17) Widening	Newport News CL	Route 134/Hampton Hwy Flyover	York County	Widening from 4 lanes to 6 lanes	4	6	68	53	34	155
2050-243	George Washington Memorial Hwy (US 17) I Widening	Farmwood Rd	Main St (@ Walmart)	Gloucester County	Widen from 4 to 6 lanes	4	6	57	56	41	154
2050-360	Laskin Road Widening - Phase IB	Laskin Rd Bridge	Oriole Dr	Virginia Beach	Widen from 4 to 6 lanes to relieve congestion on nearby roadways	4	6	41	48	61	150
2050-348	Independence Blvd Widening (Town Center)	Pembroke Blvd	Virginia Beach Blvd	Virginia Beach	Widen from 6 to 8 lanes	6	8	48	59	42	149
2050-215	Battlefield Blvd Widening	Johnstown Rd	I-64	Chesapeake	Widen from 4/6 to 6/8 lanes	4/6	6/8	65	47	36	148
2050-361	Laskin Road Widening - Phase II	Oriole Dr	30th/32nd St	Virginia Beach	Widen from 4 to 6 lanes to relieve congestion on nearby roadways	4	6	37	54	55	146
2050-316	Route 58/Holland Bypass (new limited-access roadway)	Suffolk Bypass	Business Route 58 East of Holland	Suffolk	New limited access facility from the western end of the Suffolk Bypass to Business Route 58 East of Holland	0	4	51	70	22	143
2050-236	Military Hwy Widening	Virginia Beach CL	I-464	Chesapeake	Widen from 4/6 to 8 lanes with bicycle and pedestrian facilities	4	8	57	48	36	141

DRAFT 2050 LRTP PROJECT PRIORITIZATION SCORES - ROADWAY

2050 ID	PROJECT NAME	FROM	TO	LOCALITY	PROJECT PURPOSE	EXISTING LANES	PROPOSED LANES	PROJECT UTILITY	ECONOMIC VITALITY	PROJECT VIABILITY	GRAND TOTAL SCORE
2050-243A	George Washington Memorial Hwy (US 17) Widening I (without Phase I)	Tidemill Rd	Main St (@ Walmart)	Gloucester County	Widen from 4 to 6 lanes	4	6	57	53	30	140
2050-388	George Washington Memorial Hwy (US 17) Widening - Phase I	Coleman Bridge	Fort Eustis Blvd (Rte 105)	York County	Widening	4	6	49	62	29	140
2050-278	Oyster Point Rd Widening - Phase I	Operations Dr	Waterman Dr	Newport News	Widen from 4 to 6 lanes by installing a third through-lane westbound from HQ Way to Operations Drive and an eastbound throughlane from Oyster Point Road Service Road to Waterman Drive	4	6	40	44	55	139
2050-381	Shore Drive Widening - Phase II	Pleasure House Rd	Treasure Island Dr	Virginia Beach	Widen from 4 to 6 lanes	4	6	45	50	44	139
2050-362	Laskin Road Widening - Phase III	Republic Rd	I-264	Virginia Beach	Widen from 4 to 6 lanes	4	6	39	47	50	136
2050-211	US 58 Corridor Improvements	I-664	Southampton/Greensville CL	Multi-jurisdictional	Integrate various improvements along the US 58 Corridor to improve travel times and safety.	4/6	4/6	44	64	28	136
2050-304	Bridge Rd (US 17) Widening - Phase 3	Mills Godwin Bridge	Isle of Wight CL	Suffolk	Widen from 4 to 6 lanes	4	6	39	46	47	132
2050-370	North Great Neck Rd Widening	Virginia Beach Blvd	Wolfsnare Rd	Virginia Beach	Widen from 4 to 6 lanes	4	6	40	48	44	132
2050-282	Warwick Blvd Widening - Phase II	Oyster Point Rd	Bland Blvd	Newport News	Install a third through lane northbound and southbound on Warwick Blvd from Oyster Point Rd to Bland Blvd for additional capacity	4	6	53	51	28	132
2050-261	Rt 199/Humelsine Pkwy Widening	Route 5 (John Tyler Highway)	Colonial Pkwy	James City County	Widening and intersection improvements as part of a VDOT Pipeline Study	4	6	40	55	31	126
2050-286	Warwick Blvd Widening - Phase VI	Lees Mill Dr	Yorktown Rd	Newport News	Install a second through lane northbound and southbound on Warwick Blvd from Lees Mill Dr to Yorktown Rd for additional capacity and to relieve congestion adjacent to Oakland Industrial Park during PM peak. Includes interchange work.	2	4	43	56	26	125
2050-283	Warwick Blvd Widening - Phase III	Bland Blvd	Beechmont Dr	Newport News	Install a third through lane northbound and southbound on Warwick Blvd from Bland Blvd to Beechmont Dr for additional capacity and to relieve congestion	4	6	50	49	25	124
2050-377	S Independence Blvd Widening	Baxter Rd	Holland Rd	Virginia Beach	Widening and continuous left-turn lanes at Edwin Drive	4/8	8	50	36	37	123
2050-387	George Washington Memorial Hwy (US 17) Widening - Phase II	Fort Eustis Blvd (Rte 105)	Denbigh Blvd (Rte 173)	York County	Widening	4	6	42	48	33	123
2050-297	Virginia Beach Blvd Widening	Glenrock Rd	Winburne Ln	Norfolk	Remove service lanes and convert into 6 lane section with improved intersections, pedestrian safety, lighting and landscaping	4	6	38	53	31	122
2050-284	Warwick Blvd Widening - Phase IV	Beechmont Dr	Atkinson Way	Newport News	Install a third through lane northbound and southbound on Warwick Blvd from Beechmont Dr to Atkinson Way for additional capacity	4	6	44	49	29	122
2050-273	J. Clyde Morris Blvd Widening	Jefferson Ave	Warwick Blvd	Newport News	Widening. Includes CSX Overpass work.	4	6	51	47	24	122
2050-390	Victory Blvd (Rte 171) Widening (York portion)	Hampton Hwy (Rte 134)	Poquoson/York CL	York County	Widening from 2 to 4 lanes	2	4	57	32	32	121
2050-313	Nansemond Pkwy (Rte 337) Widening - Phase 2	Shoulder's Hill Rd (Rte 626)	Wilroy Rd (Rte 642)	Suffolk	Provides widening from 2 to 4 lanes to address congestion	2	4	57	33	31	121
2050-347	Independence Blvd Widening (North)	Haygood Rd	Northampton Blvd	Virginia Beach	Widen from 4 to 6 lanes	4	6	43	41	36	120
2050-209	Newtown Road Widening	Baker Rd	Virginia Beach Blvd	Multi-jurisdictional	Relieve congestion on parallel facility	4	6	44	45	30	119
2050-285	Warwick Blvd Widening - Phase V	Atkinson Way	Lees Mill Dr	Newport News	Install a third through lane northbound and southbound on Warwick Blvd from Atkinson Way to Lees Mill Dr for additional capacity	4	6	45	50	24	119

DRAFT 2050 LRTP PROJECT PRIORITIZATION SCORES - ROADWAY

2050 ID	Project Name	From	To	Locality	Project Purpose	Existing Lanes	Proposed Lanes	Project Utility	Economic Vitality	Project Viability	Grand Total Score
2050-501	VA-164 Extension	I 664 / Pughsville Road Interchange	Suffolk Bypass	Multi-jurisdictional	Extend VA-164 via I 664 to Pughsville Rd and parallel RR Right of Way to bypass Bowers Hill	0	2	41	55	21	117
2050-287	Warwick Blvd Widening - Phase I	Nettles Dr	Oyster Point Rd	Newport News	Install a third through lane northbound and southbound on Warwick Blvd from Nettles Dr to Oyster Point Rd for additional capacity and congestion relief	4	6	49	47	21	117
2050-235	Kempsville Rd Widening	Battlefield Blvd N	Clearfield Ave	Chesapeake	Widening	4	6	58	28	30	116
2050-274	Jefferson Ave Widening - Phase I	Green Grove Ln	Industrial Park Dr	Newport News	Install a third through lane northbound and southbound on Jefferson Ave from Green Grove RoadLn to Industrial Park Dr for additional capacity	4	6	38	49	28	115
2050-391	Wythe Creek Rd Widening	Carys Chapel Rd	Alphus St	Poquoson	Widening from 2 to 3 lanes with bicycle and pedestrian accommodations	2	3	48	24	42	114
2050-275	Jefferson Ave Widening - Phase II	Industrial Park Dr	Fort Eustis Blvd	Newport News	Install a third through lane northbound and southbound on Jefferson Ave from Industrial Park Dr to Fort Eustis Blvd for additional capacity	4	6	39	49	25	113
2050-309	Godwin Blvd Widening - Phase 2	Holly Hill Ln	Village of Chuckatuck	Suffolk	Widening from 2 to 4 lanes to address congestion	2	4	38	41	32	111
2050-315	Route 13 Widening (or new limited access facility)	North Carolina State Line	Southwest Suffolk Bypass	Suffolk	Widen existing Route 13 from 2 to 4 lanes or construct a new limited access facility between the Southwest Suffolk Bypass and the NC state line	0/2	4	38	42	31	111
2050-378	S Witchduck Rd Widening	Virginia Beach Blvd	I-264	Virginia Beach	Widening	6	8	53	30	28	111
2050-322	Whaleyville Blvd (US 13) Widening - Phase 2	Carolina Rd (Rte 32)	Village of Whaleyville	Suffolk	Corridor improvements to improve inter-state passenger and freight movements	2	4	39	39	32	110
2050-355	Kempsville Rd Widening	Providence Rd	Princess Anne Rd	Virginia Beach	Widening	4	6	55	26	29	110
2050-248	E Mercury Blvd Widening	Andrews Blvd	LaSalle Ave	Hampton	Widening	4/8	6/8	44	47	19	110
2050-306	College Dr Widening - Phase 2	Western Fwy	I-664	Suffolk	Widening	4	6	44	35	29	108
2050-300	Frederick Blvd Widening	Turnpike Rd	I-264	Portsmouth	Widening	4	6	33	49	26	108
2050-252	W Mercury Blvd Widening	Power Plant Pkwy & Todds Ln	I-64	Hampton	Widening	8	10	52	33	23	108
2050-298	Victory Blvd (Rte 171) Widening (Poquoson portion)	Poquoson/York CL	Wythe Creek Rd (Rte 172)	Poquoson	Widening from 2 to 4 lanes	2	4	43	24	40	107
2050-244	George Washington Memorial Hwy (US 17) Widening II	Main St (@ Walmart)	Ark Rd	Gloucester County	Congestion Relief, widening, safety improvement	4	6	39	38	30	107
2050-238	Mt Pleasant Rd Widening - Phase 2	Etheridge Rd	Centerville Tnpk	Chesapeake	Widening of Mt Pleasant Rd along existing alignment from 2 to 4 lanes from Centerville Tnpk to Etheridge Rd to include bike/ped facilities	2	4	50	29	27	106
2050-354	Kempsville Rd Widening	Centerville Tpke	Indian River Rd	Virginia Beach	Widening	4	6	47	33	25	105
2050-310	Godwin Blvd Widening - Phase 3	Village of Chuckatuck	Isle of Wight CL	Suffolk	Widening from 2 to 4 lanes to address congestion	2	4	30	40	34	104
2050-321	Whaleyville Blvd (US 13) Widening - Phase 1	Village of Whaleyville	North Carolina State Line	Suffolk	Corridor improvements to improve inter-state passenger and freight movements	2	4	40	31	31	102
2050-255	S Church St Widening	Main St	Evans Dr	Isle of Wight (Smithfield)	Widening	2	4	32	29	40	101

DRAFT 2050 LRTP PROJECT PRIORITIZATION SCORES - ROADWAY

2050 ID	Project Name	From	To	Locality	Project Purpose	Existing Lanes	Proposed Lanes	Project Utility	Economic Vitality	Project Viability	Grand Total Score
2050-279	Oyster Point Rd Widening - Phase III	CSX Overpass	CSX Overpass	Newport News	Install a third through lane eastbound and westbound across the CSX railroad overpass for additional capacity and to relieve congestion	4	6	39	39	22	100
2050-237	Mt Pleasant Rd Widening - Phase I	Chesapeake Expressway	Etheridge Rd	Chesapeake	Relieve congestion w/ 2 additional travel lanes & improve pedestrian accommodations	2	4	45	29	25	99
2050-207	Jamestown Road Widening	Yorkshire Dr	James Square	Multi-jurisdictional	Intersection improvements as part of a VDOT Pipeline Study	4/2	5/3	35	24	38	97
2050-312	N Main St Widening	Godwin Blvd/Pruden Blvd	E Constance Rd & W Constance Rd	Suffolk	Widening	4	6	34	40	21	95
2050-372	Princess Anne Road Widening Phase VIII	Providence Rd	Salem Rd	Virginia Beach	Widen from 4 to 6 lanes	4	6	34	22	38	94
2050-373	Princess Anne Road Widening Phase IX	Newtown Rd	Oakmears Cres & Singleton Way	Virginia Beach	Widening	4	6	33	37	23	93
2050-320	W Constance Rd Widening	N Main St	N Broad St	Suffolk	Widening	2	4	33	40	20	93
2050-220	Cedar Rd Widening III	Briarfield Dr	Battlefield Blvd S	Chesapeake	Widening	3	4	37	25	29	91
2050-268	Denbigh Blvd Widening - Phase II	CSX Overpass East Abutment	Jefferson Ave	Newport News	Install a third through lane eastbound and westbound from the CSX railroad overpass to Jefferson Ave for additional capacity	4	6	28	35	28	91
2050-254	Benns Church Blvd Widening	258/32/10 (Brewers Neck)	S Church St	Isle of Wight County	Widening from 4 to 6 lanes	4	6	36	33	22	91
2050-267	Denbigh Blvd Widening - Phase I	Warwick Blvd	CSX Overpass West Abutment	Newport News	Install a third through lane eastbound and westbound from Warwick Blvd to the CSX railroad overpass for additional capacity	4	6	34	29	26	89
2050-200	Airline Blvd Widening	Jolliff Road	Greenwood Dr	Multi-jurisdictional	Widening	2/3	4	34	32	22	88
2050-386	Denbigh Blvd (Rte 173) Widening	Newport News CL	G.W. Mem Hwy (US 17)	York County	Widening	2	4	30	26	30	86
2050-302	Portsmouth Blvd	Chesapeake CL	Hodges Manor Rd	Portsmouth	Widening	4	6	38	27	21	86
2050-305	College Dr Widening - Phase 1	Armsted Rd & Harbour View Blvd	I-664 Ramp	Suffolk	Widening	4	6	28	33	22	83
2050-269	Harpersville Rd Widening I	Jefferson Ave	Warwick Blvd	Newport News	Widen Harpersville Rd from Jefferson Ave to Warwick Blvd for additional capacity. Includes new CSX Overpass	2	4	30	29	21	80
2050-219	Cedar Rd Widening II	Cedar Rd & Dominion Blvd S	Bells Mill Rd (West)	Chesapeake	Widening	4	6	23	26	25	74
2050-239	S Battlefield Blvd Widening	Hanbury Rd	Peaceful Rd & Hillwell Rd	Chesapeake	Widening	2	4	29	18	26	73
SECONDARY											
2050-385	Commonwealth Dr Extension	G.W. Mem Hwy (US 17)/Coventry Boulevard	Commonwealth Dr	York County	Construct new facility to extend road	0	4	54	28	48	130
2050-258	Longhill Rd Widening - Phase 2	Olde Towne Rd	Warhill Trail	James City County	Widen from 2 to 4 lanes	2	4	44	23	39	106
2050-208	Mooretown Rd Extension	Lightfoot Rd	Croaker Rd	Multi-jurisdictional	Construct 4-lane extension from Lightfoot Road to Croaker Road	0	4	25	40	34	99
2050-259	Longhill Rd Widening - Phase 3	Warhill Trail	Centerville Rd	James City County	Widening from 2 lanes to 4 lanes	2	4	33	20	35	88

DRAFT 2050 LRTP PROJECT PRIORITIZATION SCORES - ROADWAY

2050 ID	Project Name	From	To	Locality	Project Purpose	Existing Lanes	Proposed Lanes	Project Utility	Economic Vitality	Project Viability	Grand Total Score
2050-257	Centerville Rd Widening	Richmond Rd (US 60)	Hotwater Trl & Longhill Rd	James City County	Widening and other improvements as part of a VDOT Pipeline Study	2	4	29	26	23	78
2050-253	Battery Park Rd Widening	S. Church St	Nike Park Rd	Isle of Wight (Smithfield)	Widening	2	4	25	26	22	73
URBAN											
2050-350	Indian River Rd Widening - Phase II	Centerville Tnpk	Ferrell Pkwy	Virginia Beach	Widen from 6 to 8 lanes to relieve congestion on nearby roadways	6	8	71	50	38	159
2050-349	Indian River Rd Widening - Phase I	I-64	Centerville Tnpk	Virginia Beach	Widen from 8 to 10 lanes	8	10	55	52	47	154
2050-328	Dam Neck Road Widening - Phase I	Princess Anne Rd	Holland Rd	Virginia Beach	Widen from 4 to 6 lanes	4	6	50	58	43	151
2050-325	Centerville Turnpike Widening - Phase II	Kempsville Rd	Indian River Rd	Virginia Beach	Widen from 2 to 6 lanes	2	6	59	34	52	145
2050-341	General Booth Blvd Widening - Phase II	Oceana Blvd	Dam Neck Rd	Virginia Beach	Widen from 6 to 8 lanes to relieve congestion on nearby roadways	6	8	47	49	40	136
2050-376	Rosemont Rd Widening - Phase VI	Virginia Beach Blvd	Holland Rd	Virginia Beach	Widen from 4 to 6 lanes to relieve congestion on nearby roadways	4	6	42	40	53	135
2050-293	Newtown Rd Widening	I-264	Virginia Beach Blvd	Norfolk	Widening from 4 to 6 lanes	4	6	59	47	24	130
2050-247	Coliseum Dr Extension B	Butler Farm Rd	N. Campus Pkwy/ Magruder Blvd Intersection	Hampton	New 4-lane roadway extension	0	4	36	43	50	129
2050-333	Ferrell Pkwy Widening - Phase I	Indian River Rd	Indian Lakes Blvd	Virginia Beach	Widen from 4 to 6 lanes	4	6	49	33	47	129
2050-382	Southeastern Parkway & Greenbelt Phase III (Future Phase I)	Holland Rd	Princess Anne Rd	Virginia Beach	New 4-lane alignment to relieve congestion and provide new access	0	4	52	49	28	129
2050-344	Holland Road Widening - Phase II	South Plaza Trl	Rosemont Rd	Virginia Beach	Widen from 4 to 6 lanes to relieve congestion on nearby roadways	4	6	43	31	54	128
2050-229	Greenbrier Pkwy Widening	Volvo Pkwy	Woodlake Dr	Chesapeake	Widening from 6 lanes to 8 lanes to address congestion and freight bottleneck	6	8	57	43	28	128
2050-299	Elm Ave Realignment and Widening	Victory Blvd (Rte 239)	G.W. Hwy (US 17)	Portsmouth	Widen from 2 to 4 lanes and realigh to improve RR croing asn access Gates 29 and 36 to Norfolk Naval Shipyard and safety at SNJB	2	4	47	31	49	127
2050-330	Dam Neck Road Widening - Phase III	Drakesmile Rd	London Bridge Rd	Virginia Beach	Widen from 4 to 6 lanes	4	6	36	52	39	127
2050-365	Lynnhaven Pkwy Widening Phase I	E Mall Dr & International Pkwy	Lynnhaven Pkwy & I-264 Onramp	Virginia Beach	Widening	6	8	48	50	27	125
2050-343	Holland Road Widening - Phase I	Independence Blvd	South Plaza Trl	Virginia Beach	Widen from 4 to 6 lanes to relieve congestion on nearby roadways	4	6	41	34	48	123
2050-329	Dam Neck Road Widening - Phase II	Holland Rd	Drakesmile Rd	Virginia Beach	Widen from 4 to 6 lanes to relieve congestion on nearby roadways	4	6	36	46	41	123
2050-332	Drakesmile Extended - Phase II	Holland Rd	Princess Anne Rd	Virginia Beach	New 4-lane extension to relieve congestion on nearby roadways	0	4	44	33	44	121
2050-301	Harper Ave Widening	Rte 164/US 58	Portsmouth Marine Terminal	Portsmouth	Pavement restoration and expansion for the main access road to PMT	2	3 or 4	36	36	48	120
2050-326	Clearfield Ave Widening	Virginia Beach Blvd	Cleveland St	Virginia Beach	Widen from 2 to 4 lanes	2	4	32	26	61	119

DRAFT 2050 LRTP PROJECT PRIORITIZATION SCORES - ROADWAY

2050 ID	Project Name	From	To	Locality	Project Purpose	Existing Lanes	Proposed Lanes	Project Utility	Economic Vitality	Project Viability	Grand Total Score
2050-249	Hampton Roads Center Pkwy Widening	Big Bethel Rd	Neil Armstrong Pkwy	Hampton	Widening	4	6	46	50	22	118
2050-336	First Colonial Rd Widening - Phase I	Laskin Rd	Old Donation Pkwy	Virginia Beach	Widen from 4 to 6 lanes to relieve congestion on nearby roadways	4	6	45	29	43	117
2050-324	Birdneck Road Widening	I-264	Virginia Beach Blvd	Virginia Beach	Widen from 4 to 6 lanes to relieve congestion on nearby roadways	4	6	38	34	40	112
2050-383	Southeastern Parkway & Greenbelt Phase IV (Future Phase II)	Princess Anne Rd	Indian River Rd	Virginia Beach	New 4-lane alignment to relieve congestion and provide new access	0	4	44	40	28	112
2050-222	Centerville Turnpike Widening - Phase I	Mt Pleasant Rd	Elbow Rd	Chesapeake	Widen from 2 to 6 lanes, including replacement of existing bridge	2	6	55	26	29	110
2050-511	Craney Island Access Rd	VA 164 and Median Rail	Future Craney Island Marine Terminal	Portsmouth	New roadway providing accessibility to future Craney Island Port facility using Cedar Road Interchange, VIG Interchange or a new access	0	2	46	34	29	109
2050-242	Volvo Pkwy Widening II	Greenbrier Pkwy	Battlefield Blvd	Chesapeake	Widening of Volvo Pkwy to 6 lanes from Battlefield Blvd to Greenbrier Pkwy to include bike/ped facilities.	4	6	43	33	32	108
2050-221	Centerville Turnpike Widening	Mount Pleasant Rd	Virginia Beach CL	Chesapeake	Widening of Centerville Tnpk along existing alignment from 2 to 4 lanes from Elbow Rd Virginia Beach CL to include bike/ped facilities	2	6	53	29	26	108
2050-272	Independence Blvd	Denbigh Blvd (Rte 173)	Fort Eustis Blvd	Newport News	New 4-lane roadway	0	4	41	26	40	107
2050-277	Lucas Creek Rd Extension	Denbigh Blvd (Rte 173)	Atkinson Blvd	Newport News	Construct 4-lane extension and bridge to relieve congestion on parallel facility	0	4	32	35	38	105
2050-342	General Booth Blvd Widening - Phase IV	London Bridge Rd	Nimmo Pkwy	Virginia Beach	Widen from 4 to 6 lanes	4	6	36	31	38	105
2050-337	First Colonial Rd Widening - Phase II	Old Donation Pkwy	Great Neck Rd	Virginia Beach	Relieve congestion on parallel facility	4	6	46	27	31	104
2050-280	Saunders Rd Widening	Harpersville Rd	Hampton CL	Newport News	Widen Saunders Rd from Harpersville Rd to Hampton City Limits for additional capacity. This project will tie into the completed widening project in the City of Hampton	2	4	39	38	26	103
2050-369	Nimmo Pkwy Extension - Phase VIIB	Albuquerque Rd/Nimmo Pkwy	Sandbridge Rd	Virginia Beach	New 2-lane extension to relieve congestion on nearby roadways	0	2	20	25	57	102
2050-331	Drakesmile Extended - Phase I	Dam Neck Rd	Holland Rd	Virginia Beach	New 4-lane extension to relieve congestion on nearby roadways	0	4	31	29	42	102
2050-515	North Suffolk Connector Rd	Nansemond Pkwy	I-664	Suffolk	New 4-lane divided roadway	0	4	27	41	34	102
2050-327	Cleveland Street Widening - Phase III	Witchduck Road	Clearfield Ave	Virginia Beach	Widen from 2 to 4 lanes	2	4	31	26	44	101
2050-276	Liberty Pkwy Extension	Oyster Point Rd	Freedom Way	Newport News	Install a new roadway from Freedom Way to Oyster Point Rd to relieve congestion at the intersection of Jefferson Ave and Oyster Point Rd	0	2	36	30	35	101
2050-223	Centerville Turnpike Widening - Phase II	Elbow Rd	Virginia Beach CL	Chesapeake	Widening of Centerville Tnpk along existing alignment from 2 to 4 lanes from Elbow Rd Virginia Beach CL to include bike/ped facilities	2	4	45	29	27	101
2050-371	North Lynnhaven Rd Widening	Virginia Beach Blvd	Lynnhaven Pkwy	Virginia Beach	Widen from 2 to 4 lanes	2	4	30	31	39	100
2050-234	Johnstown Rd Widening - Phase 3	Hanbury Rd	Waters Rd	Chesapeake	Widening Johnstown Rd along existing alignment from 2 to 4 lanes from Hanbury Rd to Waters Rd to include bike/ped facilities	2	4	34	20	45	99
2050-227	Elbow Rd Widening - Phase 2 East	Butts Station Rd	Centerville Rd	Chesapeake	Widening of Elbow Rd along existing alignment from 2 to 4 lanes from Butts Station Rd to Centerville Rd to include bike/ped facilities. Right of Way being purchased in advance	2	4	40	24	35	99

DRAFT 2050 LRTP PROJECT PRIORITIZATION SCORES - ROADWAY

2050 ID	PROJECT NAME	FROM	TO	LOCALITY	PROJECT PURPOSE	EXISTING LANES	PROPOSED LANES	PROJECT UTILITY	ECONOMIC VITALITY	PROJECT VIABILITY	GRAND TOTAL SCORE
2050-353	Jeanne St Widening	Constitution Dr	Independence Blvd	Virginia Beach	Widening from 3 lanes to 4 lanes	3	4	32	28	38	98
2050-366	Lynnhaven Pkwy Widening Phase II	Holland Rd	Princess Anne Rd	Virginia Beach	Widen from 4 to 6 lanes to relieve congestion on nearby roadways	4	6	39	25	34	98
2050-363	London Bridge Rd Widening Phase II	Shipps Corner Rd & Drakesmile Rd	International Pkwy & London Bridge Rd	Virginia Beach	Widening	4	6	37	37	24	98
2050-334	Ferrell Pkwy Widening - Phase II	Indian Lakes Blvd	Pleasant Valley Rd	Virginia Beach	Widen from 4 to 6 lanes to relieve congestion on nearby roadways	4	6	30	31	35	96
2050-335	Ferrell Pkwy Widening - Phase III	Pleasant Valley Rd	Salem Rd	Virginia Beach	Widen from 4 to 6 lanes	4	6	32	30	34	96
2050-270	Harpersville Rd Widening II	J Clyde Morris Blvd	Saunders Rd	Newport News	Widen Harpersville Rd from J. Clyde Morris Blvd to Saunders Rd for additional capacity and congestion relief during PM peak	2	4	41	26	29	96
2050-265	Briarfield Rd Widening (Newport News)	Jefferson Ave	Hampton CL	Newport News	Widening	2	4	35	37	24	96
2050-266	Chestnut Ave Widening	I-664	Briarfield Rd	Newport News	Widening	2	4	45	26	24	95
2050-345	Holland Road Widening - Phase III	Dam Neck Rd	Rosemont Rd	Virginia Beach	Widen from 4 to 6 lanes	4	6	36	26	32	94
2050-323	Wilroy Rd (Rte 642) Widening	Nansemond Pkwy (Rte 337)	Constance Rd	Suffolk	Widening from 2 to 4 lanes to address congestion	2	4	27	31	34	92
2050-241	Volvo Pkwy Widening I	Kempsville Rd	Greenbrier Pkwy	Chesapeake	Widening	4	6	33	37	22	92
2050-263	39th St Widening	Huntington Ave	Madison Ave	Newport News	Widening	2	4	33	39	20	92
2050-340	General Booth Blvd Widening - Phase I	Birdneck Rd	Oceana Blvd	Virginia Beach	Relieve congestion on parallel facility	4	6	32	33	26	91
2050-364	London Bridge Rd Widening Phase I	Dam Neck Rd	Shipps Corner Rd	Virginia Beach	Widen from 2 to 4 lanes to relieve congestion on nearby roadways	2	4	26	30	34	90
2050-339	General Booth Blvd Widening Phase III	London Bridge Rd & Red Mill Blvd	Dam Neck Rd	Virginia Beach	Widening	4	6	30	36	24	90
2050-226	Elbow Rd Widening	Butts Station Rd	Virginia Beach CL	Chesapeake	Roadway safety improvements to include realignment of curve sections and widen existing road to 4-lane divided	2	4	29	26	34	89
2050-359	Landstown Rd Widening - Phase I	Landstown Centre Way	Landstown Rd	Virginia Beach	Widen from 2 to 4 lanes	2	4	25	23	40	88
2050-225	Eden Way Extended	Eden Way North	Sam's Circle	Chesapeake	4-lane arterial connection on new alignment from Eden Way North to Sam's Circle to include bike/ped facilities	0	4	33	25	30	88
2050-232	Johnstown Rd Widening - Phase I	Battlefield Blvd	Parker Rd	Chesapeake	Widening Johnstown Rd along existing alignment from 2 to 4 lanes from Battlefield Blvd to Parker Rd to include bike/ped facilities	2	4	29	23	35	87
2050-356	Landstown Rd Extension - Phase II	Landstown Road	Nimmo Pkwy Extended	Virginia Beach	New 4-lane roadway extension	0	4	34	23	30	87
2050-513	Finney Ave Flyover	Pinner St	Route 13/337 E Washington St	Suffolk	Construct grade separated crossing of existing railroad in core Suffolk downtown area	0	2	24	38	25	87
2050-264	Bland Blvd Widening	Jefferson Ave	Warwick Blvd	Newport News	Widen the roadway including the I-64 and CSX overpass	4	6	31	35	21	87

DRAFT 2050 LRTP PROJECT PRIORITIZATION SCORES - ROADWAY

2050 ID	Project Name	From	To	Locality	Project Purpose	Existing Lanes	Proposed Lanes	Project Utility	Economic Vitality	Project Viability	Grand Total Score
2050-230	Hanbury Rd Widening	Johnstown Rd	Battlefield Blvd	Chesapeake	Widening of Hanbury Rd along existing alignment from 2 to 4 lanes from Johnstown Rd to Battlefield Blvd to include bike/ped facilities	2	4	35	23	28	86
2050-251	Rip Rap Rd Widening	Spring Rd & E 1-64 265C Off Ramp	N King St	Hampton	Widening	3	6	41	29	15	85
2050-338	General Booth Blvd Widening Phase V	Princess Anne Rd	Nimmo Pkwy	Virginia Beach	Widening	4	6	29	25	30	84
2050-379	Salem Road Widening - Phase I	Independence Blvd	Elbow Rd	Virginia Beach	Widening from 2 lanes to 4 lanes	2	4	30	25	28	83
2050-384	West Neck Rd Widening	North Landing Rd	Indian River Rd	Virginia Beach	Widening	2	4	32	28	23	83
2050-233	Johnstown Rd Widening - Phase 2	Parker Rd	Hanbury Rd	Chesapeake	Widening Johnstown Rd along existing alignment from 2 to 4 lanes from Parker Rd to Hanbury Rd to include bike/ped facilities	2	4	28	23	31	82
2050-217	Butts Station Road Widening	Kempsville Rd	Centerville Tpke N	Chesapeake	Widening	2	4	37	21	24	82
2050-375	Providence Road Widening Phase II	Kempsville Rd	Princess Anne Rd	Virginia Beach	Relieve congestion on parallel facility	2	4	33	26	23	82
2050-228	Green Tree Rd Extension	Kempsville Rd	Clearfield Ave	Chesapeake	4-lane arterial extension of Green Tree Rd on new alignment from Kempsville Rd to Clearfield Ave to include bike/ped facilities	0	4	21	28	32	81
2050-311	Harbour View Blvd Widening	River Club Dr & Townpoint Rd	Bridge Rd	Suffolk	Widening	4	6	29	33	19	81
2050-271	Harpersville Rd Widening III	Hampton Roads Center Pkwy	Saunders Rd	Newport News	Widen Harpersville Rd for additional capacity and congestion relief during PM peak. Includes I-64 overpass work	2	4	36	26	19	81
2050-357	Landstown Rd Extension - Phase III	Nimmo Pkwy Extended	North Landing Rd	Virginia Beach	New 4-lane roadway extension	0	4	28	20	32	80
2050-216	Bruce Rd Widening	Tyre Neck Rd	Taylor Rd	Chesapeake	Widening Bruce Rd along existing alignment from 2 to 4 lanes from Tyre Neck Rd to Taylor Rd to include bike/ped facilities	2	4	32	20	28	80
2050-358	Landstown Rd Extension - Phase IV	North Landing Rd	Indian River Rd	Virginia Beach	New 4-lane roadway extension	0	4	24	24	31	79
2050-367	Nimmo Pkwy Extension - Phase II	West Neck Rd	Landstown Rd Extended	Virginia Beach	Relieve congestion on parallel facility	0	2	20	28	29	77
2050-374	Providence Rd Widening Phase III	Indian River Rd	Kempsville Rd	Virginia Beach	Widening	4	6	34	23	20	77
2050-351	Indian River Rd Widening - Phase III	North Landing Rd	West Neck Rd	Virginia Beach	Widening from 2 lanes to 4 lanes	2	4	28	24	22	74
2050-352	Indian River Road Widening - Phase IV	Elbow Rd	North Landing Rd	Virginia Beach	Widening from 2 lanes to 4 lanes	2	4	28	24	22	74
2050-214	Ballahack Rd Widening	G.W. Hwy (US 17)	Old Battlefield Blvd	Chesapeake	Road widening, curve realignments, and ditch and shoulder improvements	2	4	21	27	24	72
2050-213	Bainbridge Blvd Widening	Bainbridge Blvd & S Military Hwy	Great Bridge Blvd	Chesapeake	Widening	2	4	27	23	22	72
2050-380	Salem Road Widening - Phase II	Elbow Rd	North Landing Rd	Virginia Beach	Widen 2 to 4 lanes to relieve congestion on parallel facility	2	4	30	15	26	71
2050-281	Turnberry Blvd Extension	McManus Blvd	Ridgewood Pkwy	Newport News	Install new roadway from McManus Blvd to Denbigh Blvd for congestion relief on parallel facility (Denbigh Blvd)	0	4	21	28	22	71

DRAFT 2050 LRTP PROJECT PRIORITIZATION SCORES - ROADWAY

2050 ID	PROJECT NAME	FROM	TO	LOCALITY	PROJECT PURPOSE	EXISTING LANES	PROPOSED LANES	PROJECT UTILITY	ECONOMIC VITALITY	PROJECT VIABILITY	GRAND TOTAL SCORE
2050-368	Nimmo Pkwy Extension - Phase III	Landstown Rd Extended	Salem Rd	Virginia Beach	Relieve congestion on parallel facility	0	2	21	20	23	64
2050-218	Cedar Rd Widening I	Moses Grandy Trl	Moses Grandy Trl	Chesapeake	Widening	2	4	21	21	21	63
2050-246	Briarfield Rd Widening (Hampton)	Newport News CL	Aberdeen Rd	Hampton	Widening	2	4	31	18	14	63
2050-250	Power Plant Pkwy Widening	Pine Chapel Rd	W Queen St & Briarfield Rd	Hampton	Widening	4	6	36	10	16	62
2050-224	Chesapeake Regional Airport Access Rd	West Rd	G.W. Hwy (US 17)	Chesapeake	Provide new, direct access to Chesapeake Airport from Dominion Blvd	0	4	15	18	26	59

DRAFT 2050 LRTP PROJECT PRIORITIZATION SCORES - INTERCHANGE

2050 ID	PROJECT NAME	FROM	TO	LOCALITY	PROJECT PURPOSE	PROJECT UTILITY	ECONOMIC VITALITY	PROJECT VIABILITY	GRAND TOTAL SCORE
INTERSTATE									
2050-34	I-264/Independence Blvd Interchange Improvements	N/A	N/A	Virginia Beach	Provides congestion relief and improves safety	83	80	51	214
2050-404	I-64/I-264 Interchange Improvements - Phase IIIF	N/A	N/A	Multi-jurisdictional	Construct ramp through interchange; widen I-64 EB one lane to Indian River Rd exit; replace Providence Rd bridges over I-64; remove loop ramp from I-264 WB C/D and exit ramp from I-264 WB mainline.	73	85	45	203
2050-407	I-64/I-464 Interchange Improvements - Phase A	N/A	N/A	Chesapeake	Replace loop ramps with directional ramps - I-464 Nouthbound to I-64 Westbound (Chesapeake to Virginia Beach)	69	79	50	198
2050-406	Bowers Hill Interchange Improvements	N/A	N/A	Chesapeake	Improve interchange to provide congestion relief and improve safety. EIS preferred Alternative C adds 1 Mainline + 1 Part-Time Drivable Shoulder to I-664. MLs continue through Bowers Hill interchange.	73	69	50	192
2050-422	I-64/I-464 Interchange Improvements - Phase B	N/A	N/A	Chesapeake	Replace loop ramps with directional ramps - I-464 Northbound to I-64 Eastbound (Chesapeake to Suffolk)	71	74	46	191
2050-403	I-64/I-264 Interchange Improvements - Phase IIIE	N/A	N/A	Multi-jurisdictional	Widen Newtown Rd from Greenwich Rd to north of Cleveland St; construct I-264 WB C/D roadway and outer ramp to I-64 EB/WB; widen I-64 WB to receive new ramp lanes; widen I-64 WB shoulder north of entrance ramp from Northampton Blvd, operate shoulder lane along I-64 WB during AM peak only.	60	84	45	189
2050-400	I-64/I-264 Interchange Improvements - Phase IIIB	N/A	N/A	Multi-jurisdictional	Widen I-264 EB outer C/D from Newtown Rd interchange to mainline merge; widen I-264 EB to east of Witchduck Rd; reconfigure I-264 EB ramp from Witchduck Rd. Widen I-264 EB exit to provide additional lanes; replace bridge carrvina I-264 over Witchduck Rd.	54	88	46	188
2050-402	I-64/I-264 Interchange Improvements - Phase IIID	N/A	N/A	Multi-jurisdictional	Construct ramp through interchange and merge lanes onto I-64 WB; realign entrance ramp from Military Hwy, widen I-264 EB C/D, and widen I-64 WB to 3 lanes approaching I-264 EB overpass; remove loop ramp from I-264 EB C/D to I-64 WB, and remove exit from I-264 EB mainline.	53	86	46	185
2050-19A	I-64/Denbigh Blvd Interchange - Phase 2	N/A	N/A	Newport News	Construct second phase of a full interchange at I-64 and Denbigh Blvd, including EB on and off-ramps and Denbigh Blvd bridge widening to reduce congestion and improve safety.	57	70	52	179
2050-421	I-264/Rosemont Rd Interchange Improvements	N/A	N/A	Virginia Beach	Safety improvements, Relieve congestion	72	78	27	177
2050-411	Air Terminal Interchange (Eastern Portion)	I-564/NIT Intermodal Connector	Ingersol Ave	Norfolk	Construct new interchange with additional access point to Naval Station Norfolk at Chambers Field	54	74	48	176
2050-401	I-64/I-264 Interchange Improvements - Phase IIIC	N/A	N/A	Multi-jurisdictional	Widen I-64 WB from north of Virginia Beach Blvd to Northampton Blvd Interchange; construct minor widening of bridges carrying I-64 WB over Northampton Blvd; north of exit ramp to Northampton Blvd, operate shoulder use lane along I-64 WB during AM peak only.	46	80	47	173
2050-420	I-264/Lynnhaven Interchange Improvements (Phase II)	N/A	N/A	Virginia Beach	This project reconfigures the I-264/Lynnhaven Parkway Interchange to improve capacity and enhance safety.	73	67	32	172
2050-412	I-264/Ballentine Blvd Diverging Diamond Interchange Improvements	N/A	N/A	Norfolk	Reconstruct interchange	64	50	53	167
2050-408	I-64/LaSalle Ave Interchange Improvements	I-64 WB	LaSalle Ave	Hampton	Add movement from EB I-64 to NB LaSalle Ave plus grade separated movement from WB I-64 to EB Armistead and NB LaSalle	66	63	36	165
2050-410	I-64/Fort Eustis Blvd Interchange Improvements	N/A	N/A	Newport News	Improve the surrounding intersections associated with the I-64/Fort Eustis interchange to improve safety and reliability.	61	60	43	164
2050-423	I-64/I-464 Interchange Improvements - Phase C	N/A	N/A	Chesapeake	Widen I-464 Southbound between Military Highway and I-64 Interchange, adding an auxillary lane. Three-lane interchange bridge will tie into the US 17 and US 168 split.	42	73	48	163
2050-409	I-64/North King St Interchange Improvements	N/A	N/A	Hampton	Add full interchange at King Street; close EB existing off-ramp at Rip Rap Road	71	57	33	161
2050-414	I-64/Military Hwy/Robin Hood Interchange	N/A	N/A	Norfolk	New I-64 Eastbound on-ramp and interchange improvements	58	65	31	154
2050-413	I-264/Military Hwy Interchange Improvements	N/A	N/A	Norfolk	Interchange improvements	51	60	32	143

DRAFT 2050 LRTP PROJECT PRIORITIZATION SCORES - INTERCHANGE

2050 ID	PROJECT NAME	FROM	TO	LOCALITY	PROJECT PURPOSE	PROJECT UTILITY	ECONOMIC VITALITY	PROJECT VIABILITY	GRAND TOTAL SCORE
2050-416	Frederick Blvd and I-264 Interchange Improvements	Frederick Blvd	I-264 Ramps	Portsmouth	Interchange improvements	57	46	32	135
2050-417	Victory Blvd and I-264 Interchange Improvements	Victory Blvd (Rte 239)	I-264 Ramps	Portsmouth	Interchange improvements	47	41	43	131
2050-424	Portsmouth Blvd and I-264 Interchange	N/A	N/A	Portsmouth	Interchange improvements	53	50	26	129
PRIMARY									
2050-419	Route 58/460 Interchange Improvements	N/A	N/A	Suffolk	Improve interchange as part of Port 460 project (Traditional Diamond or Diverging Diamond have been identified as alternatives).	55	53	33	141
2050-418	VIG Interchange Improvements	N/A	N/A	Portsmouth	Interchange improvements	38	41	31	110
2050-415	Cedar Ln and VA-164 Interchange	Cedar Ln	VA-164	Portsmouth	Companion project to the Craney Island Access Road Study	42	40	27	109
2050-405	Airline Blvd Interchange Improvements	Military Hwy	US 58	Chesapeake	Improve approach to the Bowers Hill interchange (could be included as part of the Bowers Hill Interchange improvements)	42	24	28	94

DRAFT 2050 LRTP PROJECT PRIORITIZATION SCORES - BRIDGE/TUNNEL

2050 ID	PROJECT NAME	FROM	TO	LOCALITY	PROJECT PURPOSE	EXISTING LANES	PROPOSED LANES	PROJECT UTILITY	ECONOMIC VITALITY	PROJECT VIABILITY	GRAND TOTAL SCORE
2050-101	James River Bridge Widening	Newport News	Isle of Wight County	Multi-jurisdictional	Widen the James River Bridge from 4 to 6 lanes	4	6	64	57	28	149
2050-102	Sidney Bertram Hazelwood Sr. Bridge Widening	Bush Creek Cir/Muddy Cove Cir	Tautog Rd	Multi-jurisdictional	Widening from 2 to 4 lanes to address congestion	2	4	38	65	38	141
2050-105	Mills Godwin Bridge Widening	Quail Hollow	Waterview Rd	Suffolk	Widening from 2 to 4 lanes to address congestion	2	4	44	60	31	135
2050-104	Kings Hwy Bridge Replacement	Godwin Blvd (Rte 10)	Kings Hwy	Suffolk	Provides for new alignment for Kings Highway Bridge that was previously closed due to deteriorated condition associated with lack of maintenance by VDOT	0	2	52	45	35	132
2050-103	Upper James River Bridge	James City County/Lower Peninsula	Surry County/Southside	Multi-jurisdictional	New bridge crossing connecting James City County to Surry County. Include walkable/bikeable	0	4	59	59	9	127
2050-100	Chesapeake Bay Bridge-Tunnel: Parallel Chesapeake Tunnel	Virginia Beach	Northampton County	Multi-jurisdictional	New parallel 2-lane tunnel across Chesapeake Channel	2	4	35	37	41	113

DRAFT 2050 LRTP PROJECT PRIORITIZATION SCORES - INTERMODAL/FREIGHT

2050 ID	PROJECT NAME	FROM	TO	LOCALITY	PROJECT PURPOSE	PROJECT UTILITY	ECONOMIC VITALITY	PROJECT VIABILITY	GRAND TOTAL SCORE
2050-508	Hampton Boulevard/Terminal Boulevard Railroad Overpass	N/A	N/A	Norfolk	Roadway-rail grade separation	80	80	33	193
2050-512	George Washington Hwy Railroad Overpass	N/A	N/A	Portsmouth	Roadway-rail grade separation near Frederick Blvd	87	54	24	165
2050-502	Freeman Ave Railroad Overpass	N/A	N/A	Chesapeake	Roadway-rail grade separation	54	49	52	155
2050-507	Granby Street Railroad Overpass	N/A	N/A	Norfolk	Roadway-rail grade separation near Wards Corner (from Rail Crossing Study)	66	63	22	151
2050-509	Little Creek Rd Railroad Overpass	N/A	N/A	Norfolk	Roadway-rail grade separation near Wards Corner (from Rail Crossing Study)	66	63	22	151
2050-511	Craney Island Access Rd	VA 164 and Median Rail	Future Craney Island Marine Terminal	Portsmouth	New roadway providing accessibility to future Craney Island Port facility using Cedar Road Interchange, VIG Interchange or a new access	63	53	32	148
2050-504	Portlock Rd Railroad Overpass	N/A	N/A	Chesapeake	Construct new overpass to replace at-grade crossing between Varsity Drive and Reid Street	70	40	35	145
2050-513	Finney Ave Flyover	Pinner St	Route 13/337 E Washington St	Suffolk	Construct grade separated crossing of existing railroad in core Suffolk downtown area	66	47	29	142
2050-501	VA-164 Extension	I 664 / Pughsville Road Interchange	Suffolk Bypass	Multi-jurisdictional	Extend VA-164 via I 664 to Pughsville Rd and parallel RR Right of Way to bypass Bowers Hill	46	76	20	142
2050-500	Container only tunnel near NIT	NIT	Craney Island	Multi-jurisdictional	Proposed conveyor-belt-like facility to transport shipping containers across the Hampton Roads Harbor from the Norfolk International Terminals (to address steep slope challenges of traditional vehicle tunnels to help move cargo).	63	62	16	141
2050-514	Nansemond Pkwy (Rte 337)/Shoulders Hill Rd At-Grade Separation	N/A	N/A	Suffolk	Highway-rail grade separation near Suffolk Meadows Blvd	70	40	30	140
2050-510	Princess Anne Rd Railroad Overpass	N/A	N/A	Norfolk	Roadway-rail grade separation near Tidewater Dr (from Rail Crossing Study)	74	43	22	139
2050-506	Church Street Railroad Overpass	N/A	N/A	Norfolk	Roadway-rail grade separation near 20th Street (from Rail Crossing Study)	66	46	25	137
2050-505	Chesapeake Blvd Railroad Overpass	N/A	N/A	Norfolk	Roadway-rail grade separation near Cromwell Road (from Rail Crossing Study)	67	40	25	132
2050-516	Washington St Railroad Overpass	N/A	N/A	Suffolk	Roadway-rail grade separation near Pinner St (from Rail Crossing Study)	62	48	22	132
2050-515	North Suffolk Connector Rd	Nansemond Pkwy	I-664	Suffolk	New 4-lane divided roadway	34	58	36	128
2050-503	Liberty St Railroad Overpass	N/A	N/A	Chesapeake	Roadway-rail grade separation near Wilson Rd (from Rail Crossing Study)	59	40	28	127

DRAFT 2050 LRTP PROJECT PRIORITIZATION SCORES - TRANSIT

2050 ID	PROJECT NAME	FROM	TO	LOCALITY	PROJECT PURPOSE	PROJECT UTILITY	ECONOMIC VITALITY	PROJECT VIABILITY	GRAND TOTAL SCORE
FIXED GUIDEWAY TRANSIT									
2050-608	Peninsula Bus Rapid Transit	Hampton	Newport News	Multi-jurisdictional		74	85	50	209
2050-616	Naval Station Norfolk Transit Extension - Phase I (Tide Light Rail extension)	Newtown Road Station	Military Circle Mall Redevelopme	Norfolk		85	70	45	200
2050-617	Naval Station Norfolk Transit Extension - Phase II	Military Circle Mall Redevelopme	Naval Station Norfolk	Norfolk		80	82	35	197
2050-614	High Capacity Transit Extension to Greenbrier Area	Downtown Norfolk	Greenbrier Area	Chesapeake		76	81	36	193
2050-606	I-264 Corridor High-Capacity Transit	Newtown Road LRT Station	Oceanfront	Multi-jurisdictional		87	85	14	186
2050-609	Peninsula High Capacity Rail Transit	Newport News	Williamsburg	Multi-jurisdictional		72	90	20	182
2050-618	High Capacity Transit Extension to Suffolk	Existing Service Locations	Suffolk	Suffolk		68	82	27	177
2050-615	Bus Rapid Transit along Warwick Blvd	Shipyard to Ft. Eustis	Ft. Eustis to Shipyard	Newport News		63	84	29	176
2050-603	High Capacity Transit Across Hampton Roads Harbor	Norfolk	Newport News	Multi-jurisdictional		79	78	19	176
2050-610	Portsmouth High-Capacity Transit Extension	Norfolk	Portsmouth	Multi-jurisdictional		74	66	23	163
MARITIME TRANSIT									
2050-601	Ferry Service between Southside and Peninsula	Southside	Peninsula	Multi-jurisdictional		78	73	29	180
2050-604	Washington DC/Norfolk Passenger Fast Ferry	Norfolk	Washington D.C.	Multi-jurisdictional		69	84	21	174
2050-612	Southside Passenger Ferry Service	Existing Service Locations	Various Locations	Multi-jurisdictional		58	77	16	151
2050-602	Elizabeth River Water Taxis	Various	Various	Multi-jurisdictional		57	76	17	150
2050-607	James River Ferry System (Hampton Roads to Richmond)	Peninsula	Richmond	Multi-jurisdictional		69	53	15	137
2050-613	Upper James River Ferry Service	Various	Various	Multi-jurisdictional		55	52	14	121
2050-600	Eastern Shore Ferry Service	Virginia Beach	Eastern Shore	Multi-jurisdictional		49	48	6	103
RAIL TRANSIT									
2050-605	Higher-Speed Richmond/Norfolk Passenger Rail (Preferred Alternative)	Norfolk	Richmond	Multi-jurisdictional		70	81	43	194

DRAFT 2050 LRTP PROJECT PRIORITIZATION SCORES - TRANSIT

2050 ID	PROJECT NAME	FROM	TO	LOCALITY	PROJECT PURPOSE	PROJECT UTILITY	ECONOMIC VITALITY	PROJECT VIABILITY	GRAND TOTAL SCORE
2050-605A	High-Speed Richmond/Norfolk Passenger Rail (Richmond Direct)	Norfolk and Newport News	Richmond	Multi-jurisdictional		83	81	24	188
2050-619	Suffolk Amtrak Station	N/A	N/A	Suffolk		72	44	36	152
OTHER TRANSIT									
2050-611	Regional Air Taxi System	N/A	N/A	Multi-jurisdictional		62	62	32	156

DRAFT 2050 LRTP PROJECT PRIORITIZATION SCORES - ACTIVE TRANSPORTATION

2050 ID	PROJECT NAME	FROM	TO	LOCALITY	PROJECT PURPOSE	PROJECT UTILITY	ECONOMIC VITALITY	PROJECT VIABILITY	GRAND TOTAL SCORE
2050-702	South Hampton Roads Trail - Suffolk to Virginia Beach Oceanfront	Downtown Suffolk	Virginia Beach	Multi-jurisdictional	Provide continuous bicycle/pedestrian facilites from downtown Suffolk to the Virginia Beach Oceanfront	90	90	62	242
2050-740	Virginia Beach Trail	Newtown Rd	Rudee Loop	Virginia Beach	14' wide paved multi-use path	79	100	55	234
2050-703	Trail757 (FKA Birthplace of America Trail/Virginia Capital Trail Extension)	Existing Virginia Capital Trail	Fort Monroe and Downtown Suffolk	Multi-jurisdictional	Extension of existing 55-mile Virginia Capital Trail that will provide over 100 miles of continuous regional bicycle/pedestrian facilities in Hampton Roads	82	85	55	222
2050-700	Chesapeake Bay Southside Loop	Hampton Blvd	Virginia Beach Trail/Norfolk Ave	Multi-jurisdictional	Continue to expand regional bicycle/pedestrian trail, providing continuous bicycle/pedestrian facilites from Norfolk to the Virginia Beach Oceanfront along Little Creek Rd, Shore Drive, and Atlantic Ave corridors	76	85	39	200
2050-740E	Virginia Beach Trail Phase V	Birdneck Rd	Rudee Loop	Virginia Beach	14' wide paved multi-use path	62	67	70	199
2050-720	Granby Street Multi-Use Path/Bike Lanes	W Ocean View Ave	Existing Path on Lafayette River Bridge	Norfolk	From Ocean View Ave to Taussig Blvd, construct a path; from Taussig Blvd to existing path on Lafayette River Br, conduct a road diet converting Granby St from six auto lanes to four auto lanes plus bike lanes in each direction	67	90	40	197
2050-738	Thalia Creek Greenway - Phase V	Virginia Beach Trail	Virginia Beach Blvd	Virginia Beach	Construct bicycle and pedestrian facility	59	75	61	195
2050-740D	Virginia Beach Trail Phase IV	London Bridge Rd	Birdneck Rd	Virginia Beach	14' wide paved multi-use path	64	76	52	192
2050-740C	Virginia Beach Trail Phase III	South Plaza Trl	London Bridge Rd	Virginia Beach	14' wide paved multi-use path	62	86	43	191
2050-718	Hampton Blvd/Little Creek Rd Bike Path	Elizabeth River Trail at Cloncurry Rd	Shore Dr	Norfolk	Add bike lanes along existing roadway	70	82	39	191
2050-740B	Virginia Beach Trail Phase II	Constitution Drive	S. Plaza Trail	Virginia Beach	Multi-use path	66	81	41	188
2050-734	Northampton Blvd Shared Use Path	Bayside Rd	Greenwell Rd	Virginia Beach	Construct shared-use path	58	76	54	188
2050-731	Greenwich Rd Shared Use Path	Newtown Rd	South Witchduck Rd	Virginia Beach	New facility (conversion of Greenwich Rd)	59	74	54	187
2050-723	Military Highway to Norfolk Outlet Mall Bike Access	I-64/Robin Hood Rd	Shopping Areas and Outlet Mall	Norfolk	Provide bike lanes along Robin Hood Rd and Miller Store Rd, and provide bike path along Pritchard St	56	78	49	183
2050-737	Thalia Creek Greenway - Phase IV	Constitution Dr	Virginia Beach Trail	Virginia Beach	Construct bicycle and pedestrian facility	58	76	43	177
2050-739	Thalia Creek Greenway - Phase VI	Constitution Dr	I-264	Virginia Beach	Construct bicycle and pedestrian facility	59	76	39	174
2050-732	I-264 Pedestrian Land Bridge/Flyover	Thalia Creek Greenway	Mt. Trashmore Park	Virginia Beach	Construct shared-use path	59	76	39	174
2050-733	Level Green Shared Use Path	Reon Dr	Chesapeake CL at College Park Blvd	Virginia Beach	New facility along powerline corridor	57	66	48	171
2050-701	East Coast Greenway - Historic Coastal Route	Elizabeth River Trail	Dismal Swamp Canal Trail	Multi-jurisdictional	Provide continuous bicycle/pedestrian facilities from the Elizabeth River Trail in Norfolk to the Dismal Swamp Trail in Chesapeake	56	75	32	163
2050-719	Elizabeth River Trail Extension to Naval Station Norfolk	Cloncurry Road	Admiral Taussig Boulevard	Norfolk	Construct bike path along Hampton Boulevard to Admiral Taussig Boulevard	54	79	30	163
2050-708	Greenbrier Pkwy Multi-Use Path	Eden Way	Kempsville Rd	Chesapeake	Multi-use path along Greenbrier Pkwy from Eden Way to Kempsville Rd	61	63	33	157

DRAFT 2050 LRTP PROJECT PRIORITIZATION SCORES - ACTIVE TRANSPORTATION

2050 ID	PROJECT NAME	FROM	TO	LOCALITY	PROJECT PURPOSE	PROJECT UTILITY	ECONOMIC VITALITY	PROJECT VIABILITY	GRAND TOTAL SCORE
2050-741	Lafayette St Shared Use Path	Richmond Rd (US 60)	Virginia Ave	Williamsburg	Lane widening (no additional capacity), including shared-use path on east side for bicycling	37	70	46	153
2050-721	Indian River Rd Bike Lanes (A)	Campostella Rd	Sparrow Rd	Norfolk	Add bike lanes on Indian River Rd from Berkley Ave in Norfolk to Sparrow Rd in Chesapeake	61	58	34	153
2050-743	Victory Blvd Shared Use Path	Big Bethel Road (Route 600)	Hampton Hwy (Rte 134)	York County	Construct shared-use path	49	42	61	152
2050-742	Strawberry Plains Rd Shared Use Path	Ironbound Rd	Berkeley Ln	Williamsburg	Convert roadway to provide multi-use path	42	53	57	152
2050-714	26th Street Multi-Use Path	Jefferson Ave	Parish Ave	Newport News	Convert roadway to provide multi-use path	52	64	34	150
2050-713	25th Street Multi-Use Path	Jefferson Ave	Parish Ave	Newport News	Convert roadway to provide multi-use path	52	64	34	150
2050-725	Elm Ave/Victory Blvd Shared Use Path	Jordan Bridge	Paradise Creek Bridge	Portsmouth	As part of corridor improvements, add a shared use path to connect the existing path along Victory to the Multiuse Path along Burtons point road that support NNSY	50	58	39	147
2050-722	Indian River Rd Bike Lanes (B)	Campostella Rd	Military Hwy	Norfolk	Add bike lanes on Indian River Rd between Campostella Rd and Military Hwy including lowering speed limits and traffic calming	61	53	31	145
2050-744	Victory Blvd Shared Use Path - II	Big Bethel Rd (Rte 600)	Carys Chapel Rd (Rte 762)	York County	Construct shared-use path	44	46	52	142
2050-717	28th Street Multi-Use Path	Jefferson Ave	Parish Ave	Newport News	Install a road diet on 28th St from Jefferson Ave to Parish Ave to enhance other modes of travel	52	63	26	141
2050-715	27th Street Multi-Use Path	Jefferson Ave	Parish Ave	Newport News	Install a road diet on 27th St from Jefferson Ave to Parish Ave to enhance other modes of travel	52	63	26	141
2050-704	Battlefield Blvd Bicycle/Pedestrian Improvements	Military Hwy	Volvo Pkwy	Chesapeake	Provide bicycle and pedestrian accomodations for safer travel to shopping/retail on foot	57	52	31	140
2050-730	Suffolk Seaboard Coastline Trail (Kenyon Road spur)	Downtown Suffolk	Kenyon Rd	Suffolk	Provide rail trail between Camp Community College and Downtown Suffolk	40	63	36	139
2050-716	28th St Greenway Bridge	Warwick Blvd	Jefferson Ave	Newport News	Road Diet & Bridge conversion to a greenway with multi-use path	51	68	19	138
2050-709	Shell Rd/Canal Rd Multi-Use Path	G.W. Hwy (US 17)	Military Hwy	Chesapeake	Multi-use path from G.W. Hwy (US 17) to Military Hwy along Shell Rd/Canal Rd	52	57	28	137
2050-735	Seaboard Rd Shared Use Path	North - Princess Anne Rd	South - Princess Anne Rd	Virginia Beach	New facility and land acquisition	52	53	28	133
2050-728	Twin Pines Rd Shared Use Path	Swannanoa Dr	Sunset Point	Portsmouth	Install shared use path	40	55	34	129
2050-729	Suffolk Seaboard Coastline Trail	Downtown Suffolk	Pughsville Rd	Suffolk	Rail-to-Trail, part of the South Hampton Roads Trail	42	44	42	128
2050-745	Yorktown Rd Shared Use Path - I	Hampton Highway (Route 134)	Victory Blvd (Rte 171)	York County	Construct shared-use path	50	27	49	126
2050-736	Shore Drive Protected Bike Lane	Kendall Street	80th Street	Virginia Beach	Improve existing bike lanes along Shore Drive to increase safety and accessibility	43	41	37	121

DRAFT 2050 LRTP PROJECT PRIORITIZATION SCORES - ACTIVE TRANSPORTATION

2050 ID	PROJECT NAME	FROM	TO	LOCALITY	PROJECT PURPOSE	PROJECT UTILITY	ECONOMIC VITALITY	PROJECT VIABILITY	GRAND TOTAL SCORE
2050-711	S Church St Shared-Use Path	Battery Park Rd	Red Point Dr	Isle of Wight County	Construct an 8-foot-wide shared-use path along the east side of S Church St	39	41	39	119
2050-710	Gloucester County Multi-Use Path	Main St	Beaverdam Park	Gloucester County	Construct bicycle and pedestrian facility	33	45	39	117
2050-706	Etheridge Manor Blvd/ Hanbury Rd Multi-Use Path	Centerville Tnpk	Johnstown Rd	Chesapeake	Construct new multi-use path	43	36	26	105
2050-707	George Washington Hwy Multi-Use Path	Moses Grandy Trail	Deep Creek Park Trailhead	Chesapeake	Multi-use path along George Washington Hwy from Moses Grandy Trail to connect to existing trail facility at Deep Creek Park	37	36	30	103
2050-712	Centerville Rd Bike Lane	John Tyler Hwy (Rte 5)	Monticello Ave	James City County	Construct bicycle lanes (connect to Virginia Capital Trail)	28	25	49	102
2050-724	Hunts Neck Rd (Rte 172) Bike Path	Yorktown Rd	Pasture Rd	Poquoson	Provide 10' Shared Use Path	25	26	38	89
2050-705	Dismal Swamp Canal Multi-Use Trail	Existing Trailhead	North Carolina State Line	Chesapeake	Multi-use path connecting from existing Dismal Swamp Canal trailhead to NC border	22	30	26	78

2050 LRTP COMMITTED PROJECTS (no prioritization score)

2050 ID	UPC(s)	LOCALITY	PROJECT NAME	FROM	TO	PROJECT CATEGORY	PROJECT DESCRIPTION	EXISTING LANES	PROPOSED LANES
2050-1		Multi-jurisdictional	I-64 Widening Including Hampton Roads Bridge-Tunnel	I-664 (Hampton Coliseum)	I-564	Bridge/Tunnel	Widen from 4 to 6 lanes including 1 full-time HOT and 1 part-time HOT shoulder	4/6	6/8
2050-2	123129	Multi-jurisdictional	I-64 Peninsula Widening - Segment 4	1.15 miles west of Route 199, Lightfoot (Exit 234)	Hampton Roads MPA Boundary	Highway	Widen from 4 to 6 lanes	4	6
2050-3	125602	Multi-jurisdictional	I-64/I-264 Interchange Improvements - Phase IIIA	N/A	N/A	Interchange	Construct bridges I-64 Eastbound over Kempsville Road and Virginia Beach Boulevard, and I-264 Eastbound over Newtown Road; Widen I-64 Eastbound by 1-2 lanes from Northampton Boulevard entrance ramp and I-264 Eastbound by one lane to merge with mainline.	N/A	N/A
2050-4		Multi-jurisdictional	Hampton Roads Express Lanes Network	Jefferson Ave	Bowers Hill	Highway	Construct regional High Occupancy Toll (HOT) system by converting High Occupancy Vehicle (HOV) lanes or constructing new lanes	0/2	2/4
2050-5	T15554	Multi-jurisdictional	Chesapeake Bay Bridge-Tunnel: Parallel Thimble Shoal Tunnel Widening	Virginia Beach	Northampton County	Bridge/Tunnel	New parallel 2-lane tunnel across Thimble Shoal Channel	2	4
2050-6	97715	Multi-jurisdictional	Wythe Creek Rd Widening	Carys Chapel Rd	Commander Shepard Blvd	Highway	Widening from 2 to 3 lanes	2	3
2050-8		Multi-jurisdictional	Hampton Roads Regional Transit System - 757 Express	N/A	N/A	Transit	Enhanced service for 757 Express	N/A	N/A
2050-9	109382	Chesapeake	Deep Creek Bridge Replacement and George Washington Hwy/Moses Grandy Trl Intersection Improvements	Mill Creek Pkwy	Diamond Ave	Bridge/Tunnel	Replace bridge and improve approaching roadways	2	5
2050-10	113199	Chesapeake	Elbow Rd Widening - Phase 1 West	Centerville Tnpk	Virginia Beach CL	Highway	Widening of Elbow Rd along existing alignment from 2 to 4 lanes from Centerville Tnpk to Virginia Beach CL to include bike/ped facilities. Right of Way being purchased in advance.	2	4
2050-11	115423	Chesapeake	George Washington Hwy (US 17) Widening	Yadkin Rd	Canal Dr	Highway	Widen from 2 to 4 lanes and will improve pedestrian accommodations	2	4
2050-12	120375	Chesapeake	I-64 (Exit 291)/I-464 Flyover Interchange Improvements	I-64 EB	Route 168 SB	Interchange	Improve interchange configuration via an I-64 Eastbound flyover to Southbound Route 168	N/A	N/A
2050-13	115526	Chesapeake	Mt Pleasant Rd/Great Bridge Bypass Interchange Improvements	N/A	N/A	Interchange	Interchange improvements along corridor	N/A	N/A
2050-256A	T30094	Isle of Wight County	US 17/Carrollton Blvd Widening - Phase II	Rte 258/Brewers Neck Blvd	US 258 Rte 669/Smiths Neck Rd	Highway	Widen SB direction from 2 to 3 lanes	4	5
2050-14	100920	James City County	Croaker Rd Widening	Richmond Rd (US 60)	Rochambeau Rd	Highway	Widen from 2 to 4 lanes	2	4
2050-15	115512	James City County	Longhill Road Shared Use Path	Depue Drive	Longhill Road	Active Transportation	Extension of the Longhill Road shared use path to connect to the existing path along Depue Drive.	N/A	N/A
2050-16	102980	James City County	Pocahontas Trail Reconstruction	James City County Fire Station #2 (8429 Pocahontas Trail)	James River Elementary School (8901 Pocahontas Trail)	Active Transportation	Construct 5' sidewalk and 5' paved shoulder with pedestrian lighting and bus pull-outs	N/A	N/A
2050-17	123160	Newport News	J. Clyde Morris Blvd / George Washington Hwy (US 17) Widening	I-64	York CL	Highway	Widen from 4 to 6 lanes to improve interstate access from York County	4	6
2050-278		Newport News	Oyster Point Rd Widening - Phase I	Operations Dr	Waterman Dr	Highway	Widen from 4 to 6 lanes by installing a third through-lane westbound from HQ Way to Operations Drive and an eastbound throughlane from Oyster Point Road Service Road to Waterman Drive	4	6
2050-18	123179	Newport News	Oyster Point Rd Widening - Phase II	Warwick Blvd	Radcliff Ln	Highway	Widen from 4 to 6 lanes by installing a third through-lane westbound from Arboretum Way to Warwick Boulevard and an eastbound throughlane from Nettles Drive to Radcliff Lane	4	6
2050-19	119217 123656	Newport News	I-64/Denbigh Blvd Interchange - Phase 1	N/A	N/A	Interchange	Install first phase of a full interchange at I-64 and Denbigh Blvd, including a WB off-ramp, WB on-ramp with signal, I-64 widening, and intersection improvements at Denbigh Blvd/Warwick Blvd and Jefferson Ave.	N/A	N/A

2050 LRTP COMMITTED PROJECTS (no prioritization score)

2050 ID	UPC(s)	LOCALITY	PROJECT NAME	FROM	TO	PROJECT CATEGORY	PROJECT DESCRIPTION	EXISTING LANES	PROPOSED LANES
2050-20	120903	Newport News	16th Street Multi-Use Path	Marshall Ave	Peterson's Yacht Basin	Active Transportation	Install street upgrade that will provide full multi-modal facilities on 16th Street from Marshall Ave to Peterson's Yacht Basin	2	2
2050-294		Norfolk	Robin Hood Road Improvements (improved access to Norfolk International Airport)	I-64	Norfolk International Airport	Highway	Improved access to Norfolk International Airport	2	4
2050-21	118642	Norfolk	St. Paul's Project - Phase II	Church St	Tidewater Dr	Highway	Extend Freemason Street to Tidewater Drive, creating a new east-west connection from Downtown Norfolk to St. Paul's area. A residential grid network will also be constructed	0	2
2050-22	115244	Norfolk	Virginia Beach Blvd Widening	Winburne Ln	Newtown Rd	Highway	Project will remove service lanes/widen to 6-lanes from Winburne Ln to Newtown Road. Project will also include an improved intersection at George Street and pedestrian enhancements	N/A	N/A
2050-411A	59175	Norfolk	Air Terminal Interchange (Western Portion)	Seabee Rd	I-564/NIT Intermodal Connector	Interchange	Construct a new interchange on the western side of the I-564 Intermodal Connector to provide an additional access point to Naval Station Norfolk. Includes expanding existing ramps at Seabee Rd to support bi-directional traffic. adding new turn lanes from Hampton Blvd.	N/A	N/A
2050-726		Portsmouth	High St Complete Street Conversion	Chesnut St	MLK Overpass	Active Transportation	Convert to complete street (part of the South Hampton Roads Trail)	4	4
2050-23	120649	Suffolk	Bridge Rd (Route 17) Widening - Phase 1	Windward Ln	Harbour View Blvd	Highway	Improvements include 4 to 6 lane widening, turn lanes, and bike/pedestrian accomodations	4	6
2050-24	119334	Suffolk	Godwin Blvd Widening - Phase 1	Kings Fork Rd	Suffolk Bypass (US 460/58/13)	Highway	Improvements include 4 to 6 lane widening	4	6
2050-25	100937	Suffolk	Route 58 (Holland Rd) Widening	Suffolk Bypass	0.7 mi W. of Manning Bridge Rd	Highway	Widen from 4 to 6 lanes	4	6
2050-26		Suffolk	Shoulders Hill Rd Widening - Phase II & III	Laycock Ln	Pughsville Rd	Highway	Project will widen Shoulders Hill Road from 2 to 4 lanes between Laycock Lane and Pughsville Road	2	4
2050-318	126777	Suffolk	US 460 Corridor Improvements for Port 460	Suffolk Bypass	Lake Prince Dr	Highway	Widen from 4 to 6 lanes and redesign interchange for improved access to Port 460	4	6
2050-27	118375	Suffolk	Regional Landfill (SPSA) Flyover	N/A	N/A	Interchange	Construct interchange at regional landfill to improve safety along US 460/58/13 corridor	N/A	N/A
2050-28	110634	Suffolk	Nansemond Pkwy (Route 337)/Wilroy Rd Railroad Overpass	N/A	N/A	Intermodal/ Freight	Roadway-rail grade separation	N/A	N/A
2050-29	109381	Virginia Beach	Centerville Turnpike Widening - Phase III	Chesapeake CL	Kempsville Rd	Highway	Widen from 2 to 4 lanes	2	4
2050-30	110803	Virginia Beach	Cleveland Street Widening - Phase IV	Witchduck Rd	Independence Blvd	Highway	Wider lanes with two-way left turn lane and multimodal accomodations	2/4	4
2050-31	15828 112317 112318	Virginia Beach	Elbow Road - Phases II-B through II-D	Chesapeake CL	Virginia Beach Amphitheater	Highway	Widen from 2 to 4 lanes	2	4
2050-32	15829	Virginia Beach	Indian River Road Widening - Phase VII-A	Lynnhaven Pkwy	Elbow Rd	Highway	Relocation and widening from 2 to 4 lanes	2	4
2050-33	105623	Virginia Beach	Rosemont Road Widening - Phase V	Dam Neck Rd	Lynnhaven Pkwy	Highway	Widen from 2 to 4 lanes	2	4
2050-35	113469	Virginia Beach	Violet Bank Dr Bike Trail	Kittery Dr	Selwood Dr	Active Transportation	Construct shared-use path	N/A	N/A
2050-40	T30082	Virginia Beach	Virginia Beach Trail Phase I	Newtown Rd	Constitution Dr	Active Transportation	14' wide paved multi-use path	N/A	N/A

2050 LRTP COMMITTED PROJECTS (no prioritization score)

2050 ID	UPC(s)	LOCALITY	PROJECT NAME	FROM	TO	PROJECT CATEGORY	PROJECT DESCRIPTION	EXISTING LANES	PROPOSED LANES
2050-36	112658	Williamsburg	Capitol Landing Rd Corridor Improvements	Bypass Rd	Merrimac Trail	Active Transportation	Reducing the number of lanes from 4 to 2, including a center two-way left turn lane	4	2
2050-37	111018 111020	Williamsburg	Ironbound Rd (Rte 615) Widening	Richmond Rd (US 60)	DePue Dr (formerly Longhill Connector)	Active Transportation	Widen from 2 to 3 lanes, including a multi-use path	2	3
2050-38	111787	York County	George Washington Memorial Highway (US 17) Widening	Wolf Trap Rd	Route 173	Highway	Widen from 4 to 6 lanes	4	6
2050-39	111791	York County	Victory Blvd (Rte 171) Widening	G.W. Mem Hwy (US 17)	Hampton Hwy (Rte 134)	Highway	Widen from 5 to 6 lanes	5	6