



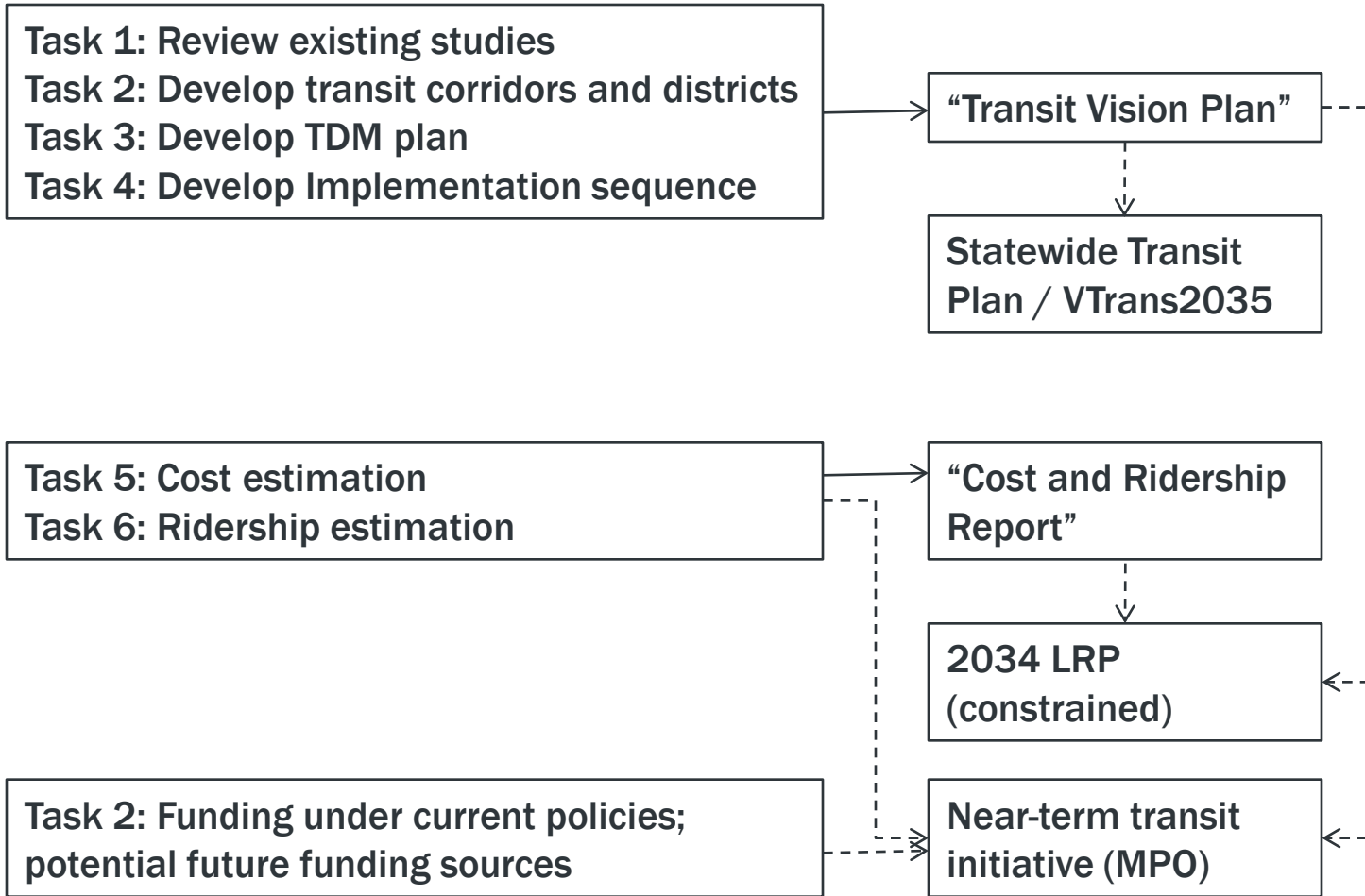
A Transit Vision Plan for Hampton Roads

MPO Board Meeting
November 19, 2008

Presented by Matthew Huston, P.E.
and Abraham Lerner, P.E.



Overview of Contract



Note: Dashed efforts will use products of this contract; dashed efforts are not included in this contract.



Study Schedule

	2008					2009			
	August	September	October	November	December	January	February	March	April
Task 1: Review recent plans									
Task 2: Develop corridor/district component									
Task 3: Develop TDM component									
Task 4: Develop implementation sequence									
Task 5: Estimate costs									
Task 6: Estimate ridership									
Task 7: Reports									
Task 8: Meetings	◆		◆	◆	◆	◆	◆		
Task 9: Public Participation			*				*		
Task 10: Project Management									

◆ Steering Committee or Board Meeting

* Public Information Meeting

Meeting dates are approximate and SUBJECT TO CHANGE





Public Meeting #1

- Format: Open house with display boards, Presentation, Q&A
- Video link between HRT and HRMPO sites
- 65 attendees
- Comments very supportive of transit and TDM expansion
 - Service to new places
 - Increased frequency and extended duration
- Web site: www.hamptonroadstransitplan.com

Task 1 Review of Past Studies

Review of Past Studies

- Researched transit service design guidelines from DRPT, FTA, and ITE
- Reviewed current comprehensive plans with an eye toward transit supportive policies
- Reviewed past transit and transportation studies as a baseline for Transit Vision Plan (TVP)

**Task 2
Corridor and
District
Component**

Development Levels Supportive of Rail

Population densities (persons per square mile)	6,667 – 15,000
Employment served (entire corridor)	125,000 or more jobs
CBD commercial floor area ratio	6.0 – 10.0 FAR
Residential densities (dwelling units per acre)	10 or more homes

Source: FTA Guidelines and Standards for Assessing Transit Supportive Land Use, May 2004

Development Levels Supportive of Fixed Route Bus

Population densities (persons per square mile)	2,500 – 4,000
Employment served (per acre)	4 – 5 jobs per acre
Commercial floor area ratio	0.35 – 1.0 FAR
Residential densities (dwelling units per acre)	4 – 5 homes per acre

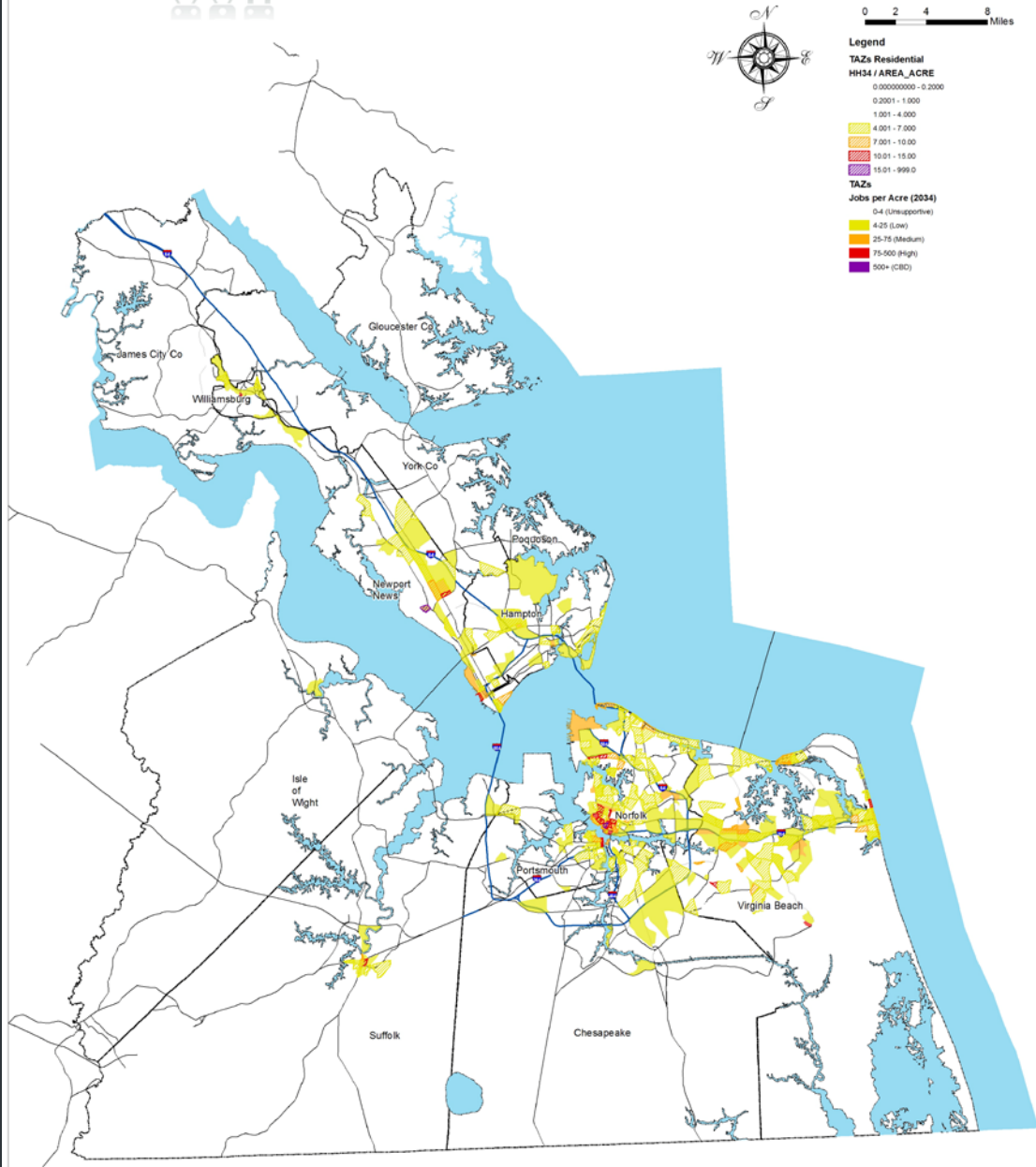
Source: ITE Toolbox for Alleviating Traffic Congestion, 1998; Pushkarev and Zupan, 1977; Ewing, 1999; Cervero, et. al., 2004; TRCP Report 100, 2003

Task 2 Corridor and District Component

Analysis to Identify Candidate Corridors

- Identified transit supportive portions of the region on the basis of residential and employment development levels
- Analyzed region for transit underserved areas based on location of non-drivers and on development levels
- Proposed candidate corridors for new or additional transit service

Task 2 Transit Supportive Areas



Task 2 Transit Supportive Areas

Strategies for Increasing Transit Supportiveness

- Regional land use planning – creating a competitive region
- Comprehensive plans and small area plans – transit supportive policies (density, mix of uses, growth management...)
- Land use ordinances – permitted densities, building setbacks, pedestrian realm, parking requirements, incentives...
- Updated forecasts of households, employment



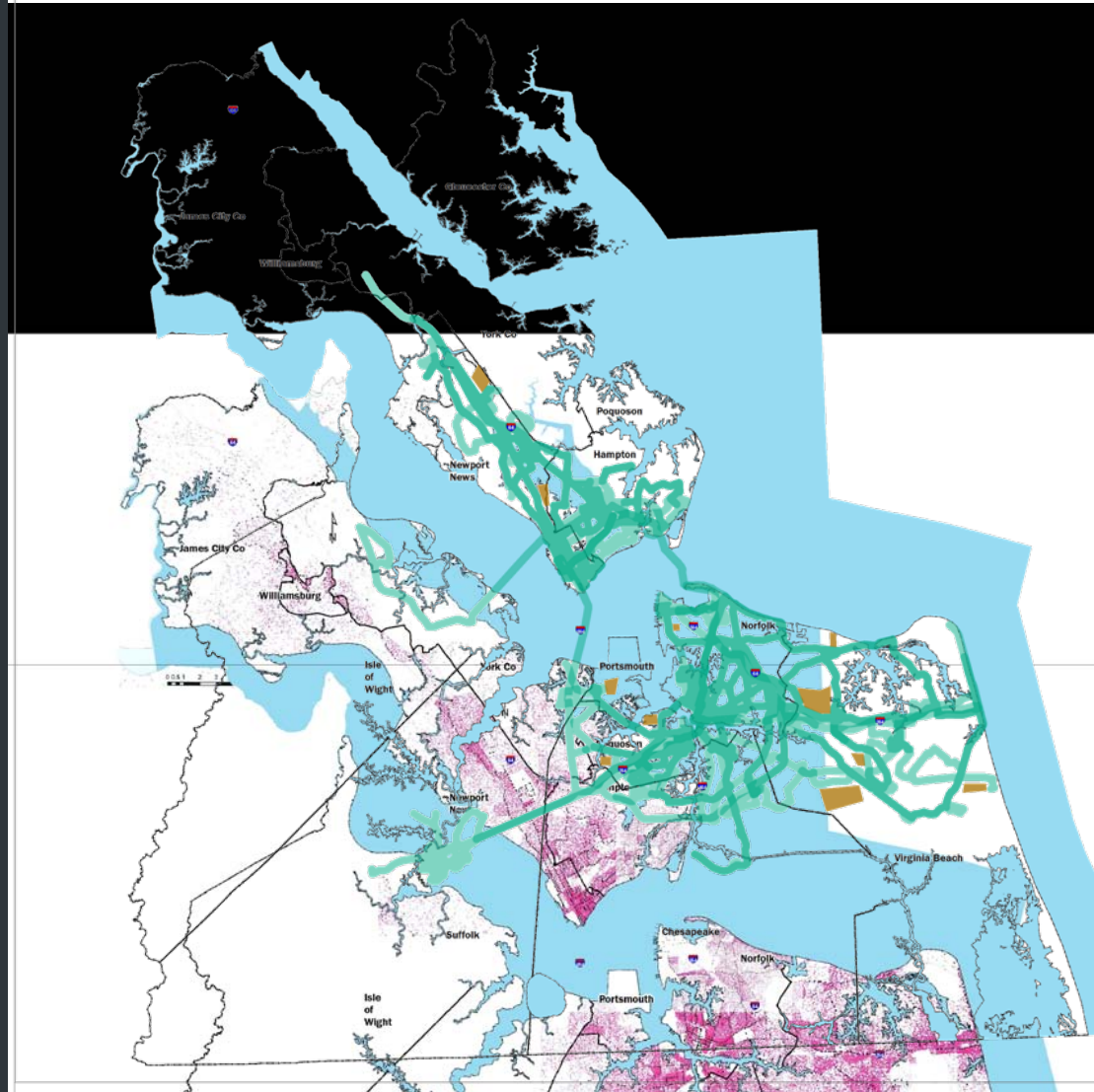
0 2 4 8
Miles

Legend

- Underserved for nondrivers
- Planned Bus Routes 1/4 mile buffer
- Existing Bus Routes 1/4 mile buffer

Pink dots represent the location of non-drivers

Task 2 Underserved Areas



Task 2 Candidate Corridors

Candidate Corridors

- Corridors are candidates that are being evaluated
- Undergoing a feasibility review as part of the Vision Plan
- Some candidate corridors are competing with one another
- Working toward creating a ‘system’

High Capacity Corridors



Task 2 Candidate Corridors

No.	Description	Implementation Mode / Date		
		Early	Mid-Range	Long-Range
1	EVMS to Newtown Road, Norfolk	LRT	LRT	LRT
2	Christopher Newport Univ to Denbigh, Newport News	Enhanced bus	LRT	LRT
3	Newtown Road to Oceanfront, Va. Beach	Enhanced bus	LRT	LRT
4	Naval Station via Military Hwy, Norfolk	Existing express bus	LRT	LRT
5	Naval Station via western Norfolk, Norfolk	Enhanced bus	Streetcar or LRT	Streetcar or LRT
6a	Campostella/Battlefield Corridor, Chesapeake	Existing local bus	BRT to Oak Brooke	BRT to Great Bridge
6b	Norfolk Southern Corridor, Chesapeake		Commuter Rail to Great Bridge	Ext. to North Carolina
7	Route 168/I-464 Corridor, Chesapeake	Express bus to Great Bridge	Express bus to Great Bridge	Ext. to North Carolina

Corridors may change after feasibility review.



High Capacity Corridors



Task 2 Candidate Corridors

No.	Description	Implementation Mode / Date		
		Early	Mid-Range	Long-Range
8a	EVMS to Midtown Portsmouth via Midtown Tunnel	Existing local bus	Express bus	LRT
8b	Downtown Portsmouth to Harbor View in Suffolk	Enhanced bus	BRT	LRT
8c	Chesapeake Sq Mall to Naval Med Ctr via Shipyard	Enhanced bus	BRT	BRT
8d	EVMS to Harbor View via Western Freeway		Express bus	LRT
8e	Naval Med Ctr to Shipyard	Circulator bus	Circulator bus	Streetcar
9a	Downtown Suffolk to Downtown Norfolk via US 460 & I-264	Express bus	Express bus	Express bus
9b	Downtown Suffolk to Downtown Norfolk via CSX/NS			Commuter Rail
9c	Chesapeake Sq Mall to Norfolk via I-664/I-264	Express bus	Express bus	Express bus

Corridors may change after feasibility review.

High Capacity Corridors



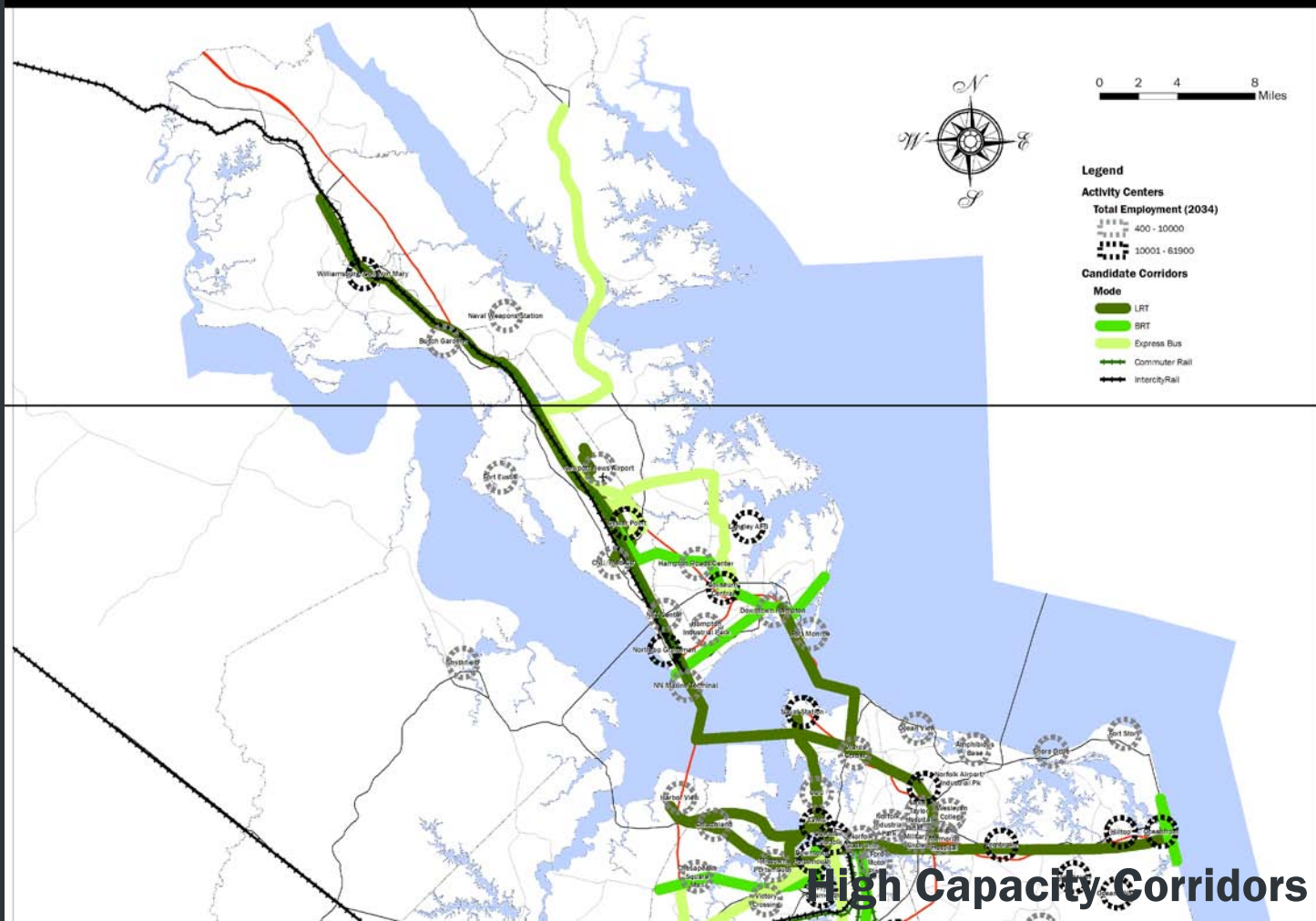
Task 2 Candidate Corridors

No.	Description	Implementation Mode / Date		
		Early	Mid-Range	Long-Range
10	Oceanfront Corridor, Va. Beach	Enhanced bus	BRT	BRT
11	CSX Corridor, Peninsula	Express bus, Amtrak	Amtrak + Commuter Rail + LRT	Amtrak + Commuter Rail + LRT
12	Downtown Hampton to Oyster Point/City Center	Enhanced bus	BRT	BRT
13	Buckroe to Downtown Hampton	Enhanced bus	Enhanced bus	BRT
14	Gloucester Co to Oyster Point/City Center		Express bus	Express bus
15	Victory Blvd and Wythe Creek Rd Corridors, Poquoson		Express bus	Express bus
16a	Peninsula to Southside		Passenger ferry	
16b	Peninsula to Southside-MMBT	Express bus	Express bus	Express bus + LRT
16c	Peninsula to Southside-HRBT	Express bus	Express bus	Express bus + LRT

Corridors may change after feasibility review.



Task 2 Candidate Corridors





Task 2 Candidate Corridors

Potential Local Bus Enhancements

- Rosemont Rd corridor – Virginia Beach
- Granby St/Chesapeake Blvd corridors – Norfolk to Ocean View
- Downtown Hampton to Downtown Newport News
- High St/Churchland Rd corridor – Portsmouth
- Monticello Ave/Ironbound Rd corridor – Williamsburg and James City County
- Diamond Springs/ Wesleyan/ Witchduck/ Kempsville corridor – Virginia Beach
- Rte 199 corridor – Williamsburg and James City County
- Port Norfolk neighborhood – Portsmouth

Next Steps

Next Steps

- Refine transit corridors based on feedback from 10/28 PTPTC, 11/5 TTC, 11/19 MPO
- Develop service implementation sequence
- Solicit top TDM strategic priorities from Traffic Oversight Committee Dec. 3 (post-TTC)
- Present Draft TVP to TTC Feb. 4 and MPO Feb. 18
- Solicit public comment on Draft TVP in late February
 - Public comment to be applied to 2034 LRP and Near-Term Transit Initiative